

SMF Frame (Continuous only)

Modification

For some time now, we have been experiencing problems on the continuous frame due to the printer not being properly secured on the top tubes as they were too close together. This was done so that there would be room for the socket and plus assembly. As a result of this, there was too much flex on the tubes.

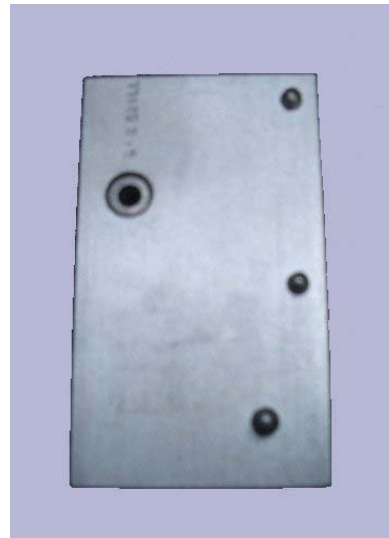
A modification has now been designed and proven. It can easily be added to the existing frame without too much bother.

Note: As of now, all the SMF side plates have been drilled to take this modification.

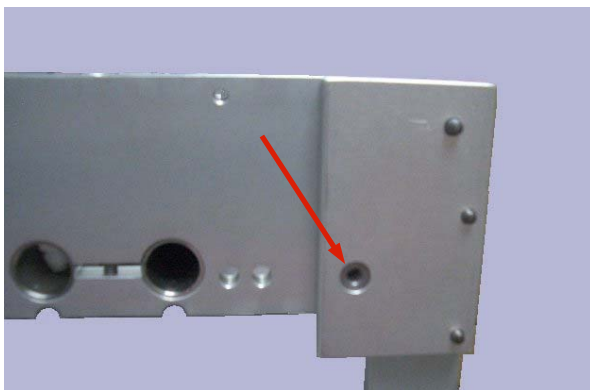
Old SMF side plate



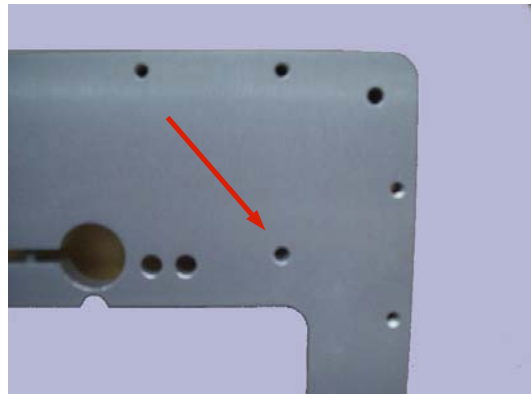
Jig plate



Place the jig plate over the existing holes and drill both plate separately (6.2mm dia.)



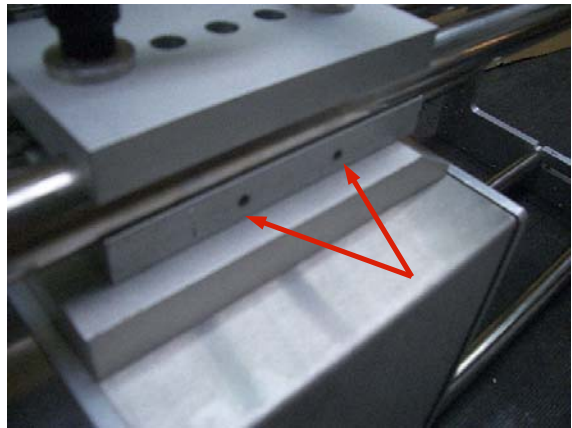
Remove the jig plate and debur the hole both side



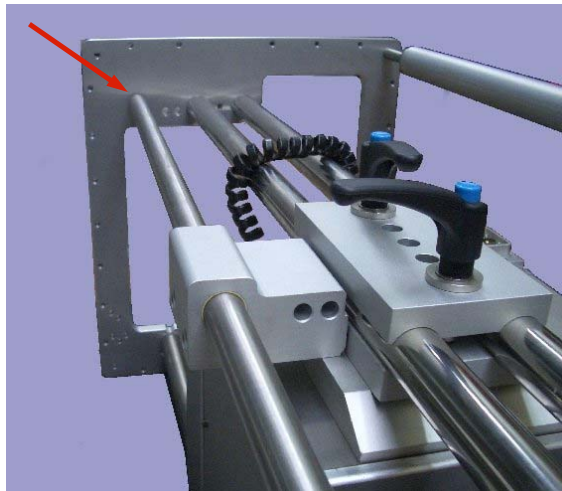
Alignment shaft and block



Pre-drilled holes on the printer (M5)



Secure the shaft to both side plates with 2 off M6 screws



Secure the block to the printer with 2 off M5 screws

