

# SPRINT SERIES



## HOT FOIL OVERPRINTERS

The Sprint Series are easy to use, automatic Hot Foil overprinters. They are cost effective yet manufactured to very high standards.

Three models are available. The Sprint has a print area of 60 x 25mm and is ideally suited to date and batch coding. The Sprint Major offers a print area of 100 x 50mm and the Sprint 100 offers 100 x 100mm. These larger units and can be used for simple graphics/text or for spanning over more than one label or pack.

The Sprint Series of Hot Foil overprinters are comparatively small for their print capabilities allowing simple installation on to any reel fed packaging or labelling machinery in conjunction with either standard, or custom designed mounting frames.

Prints are clear, dry, non-toxic, and are of a quality that is not matched by any other in-line overprinting process.

## FEATURES

- Sprint – print area – 60 x 25mm
- Sprint Major – print area – 100 x 50mm
- Sprint 100 – print area – 100 x 100mm
- 305 metre (1000ft) foil capacity
- Left and right hand versions available
- Simple, reliable electronic controls
- Digital electronic control unit - optional
- Fully variable temperature control
- Interlocked type holder access door
- Positive foil drive with infinite adjustment
- All stainless steel purpose designed air motor
- Full safety specification

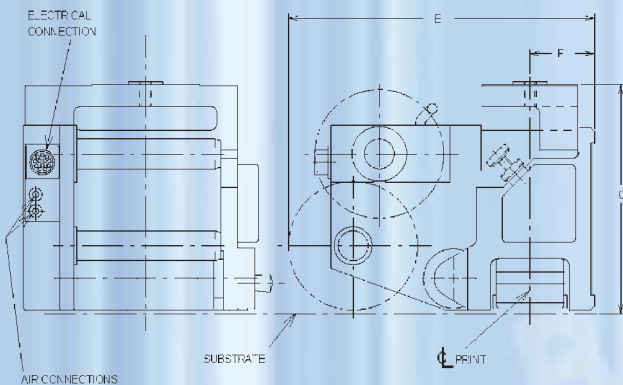
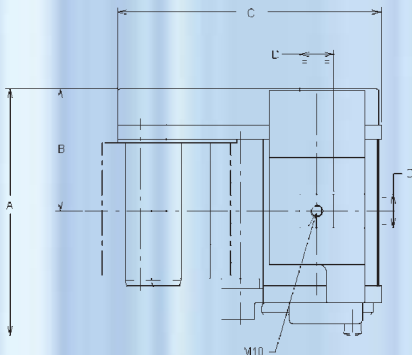


# SPRINT SERIES

SPECIFICATIONS	SPRINT	SPRINT MAJOR	SPRINT 100
Print Area	60 x 25mm	100 x 50mm	100 x 100mm
Operating Speed - Maximum	700 per minute	300 per minute	150 per minute
Foil Width - Max.	61mm	108mm	110mm
Cycle Time - Minimum	75 milliseconds	175 milliseconds	375 milliseconds
Air Cylinder	40 dia x 13mm	70 dia x 13mm	100 dia x 19mm
Free Air Consumption per Cycle	228cc @ 6.8 bar	718cc @ 6.8 bar	940cc @ 6.8 bar
Print Head Dimensions	195 x 195 x 155mm	250 x 195 x 210mm	277 x 222 x 200mm
Print Head Weight	4.65kg	8.5kg	14kg
Warm-Up Time from cold	Typically 5 minutes	Typically 8 minutes	Typically 6 minutes
End of Foil Alarm	Optional		
Foil Capacity	305m (1000ft)		
Foil Feed Adjustment	Positive, accurate and infinitely adjustable		
Air Pressure	4.0 to 6.8 bar (60 to 100 PSI)		
Dwell Time Range	12 - 650 milliseconds		
Temperature Range	Variable between 70 and 220 degrees C		
Operating Voltage	110 or 240v AC, 50/60 Hz		
Control Unit Dimensions	240 x 145 x 66mm		

## INSTALLATION DIMENSIONS

	SPRINT	SPRINT MAJOR	SPRINT 100
A	157	237	210
B	64	132	102.5
C	186	221	277
D	28.5	22.5	30
E	222	253	309
F	40	54	83
F	182.5	187.5	221.5



The optional SPRINT/Sprint Major mounting frame is the basis for most installations. It can be supplied in a standard form or ready adapted to suit specific parent machinery.



The standard electronic control unit is simple to use and incorporates infinitely variable print dwell and temperature controllers. The optional digital display controller enables the user to enter exact dwell times in milliseconds and temperatures in degrees Centigrade or Fahrenheit. It features indicators for end of foil, open door, heater failure and thermistor failure.



**Open Date Equipment Ltd.**  
Units 8 & 9 Denvale Trade Park  
145 Morden Road  
Mitcham  
Surrey, CR4 4DG. U.K.  
Tel: +44 (0)20 8655 4999  
Fax: +44 (0)20 8655 4990  
Email: sales@opendate.co.uk  
Web site: www.opendate.co.uk

**Open Date Systems, Inc.**  
Springfield Road, PO Box 538  
Georges Mills, NH 03751  
U.S.A.  
Tel: + (1) 603 763 3444  
Fax: + (1) 603 763 4222  
Toll free: 877-OPENDATE  
Email: info@opendate.com  
Web site: www.OpenDate.com

**Open Date France**  
Z.I. D'Attichy  
60350 Attichy  
France  
Tel: +33 (0) 344 42 94 43  
Fax: +33 (0) 344 42 17 17  
Email: opendate@wanadoo.fr

**Open Date GmbH**  
Schräggasse 14  
97264 Helmstadt  
Germany  
Tel: +49 (0) 9369 990026  
Fax: +49 (0) 9369 990036  
Email: sales@opendate.de  
Web Site: www.opendate.de