

# THERMOCODE SERIES 2

## SYSTEM VARIABLES (Descriptions & Limits)

ISSUE 6.00

Designed and manufactured by;

**OPEN DATE EQUIPMENT LIMITED**  
**Units 8 & 9 Puma Trade Park,**  
**145 Morden Road,**  
**Mitcham.**  
**Surrey CR4 4DG**  
**United Kingdom**

**TEL: - 0044 (0) 208 655-4999**

**FAX: - 0044 (0) 208 655 4990**

**Web Site: - <http://www.opendate.co.uk/>**

**Technical website: - <http://www.opendateinfo.com/>**

**Email: - [sales@opendate.co.uk](mailto:sales@opendate.co.uk)**

## Foreword

### System Variable Parameters

Shown within this manual are some internal software settings, they allow specific control of all the functions within the printer. Changing one or more variables may prove useful, for specialist applications.

#### **NOTE!**

**Please do not change any of these settings, unless you are certain of what you are doing. Also make sure you have the latest version of firmware installed in your Printer.**

Each command can be requested individually. When requesting a specific command name, the printer will respond by sending out the command name followed by the value that has been set. Check the named variable to ensure that you understand what the value represents, and how it will affect the printer performance.

#### General Programming Notes

1. All lines prefixed by an Escape code (character 27) and a zero (character 48)
2. All lines terminated by a line feed (character 10). A carriage return followed by line feed is also acceptable (character 13 followed by character 10).
3. Null lines allowed. (carriage return and line feed with no other data).
4. Any variables shown in red are not fully implemented.

**ABURN = Actual Burn Value of last Print**

#### **Description: - All Printers**

Returns the actual burn value used to print the last format. The received value will be different to the value in the format, due to the automatic adjustment for: - Ambient Temperature, Printhead Temperature, Printhead Resistance and Actual Speed being used.

**NOTE!** The value can only be received.

<b>System Variable Name: -</b>	<b>=</b>	<b>SYSABURN</b>
<b>RecoverMode Identifier: -</b>	<b>=</b>	<b>ABURN</b>
<b>Termode Identifier: -</b>	<b>=</b>	<b>0XSYSABURN</b>
<b>Type of Units: -</b>	<b>=</b>	<b>Micro- seconds</b>
<b>Received Value: -</b>	<b>=</b>	<b>Value from Printer</b>
<b>Minimum Value: -</b>	<b>=</b>	<b>n/a</b>
<b>Maximum Value: -</b>	<b>=</b>	<b>n/a</b>
<b>Request Command: -</b>	<b>=</b>	<b>Esc0ZXSYSABURN</b>
<b>Received String: -</b>	<b>=</b>	<b>Esc0XSYSABURN_1</b>
<b>Send Command: -</b>	<b>=</b>	<b>n/a</b>

**ACARRIAGE = Carriage length of the Printer.**

#### **Description: - Intermittent Printers**

Returns the actual carriage length of the Printer between the %A+ and %B+ sensors in Dots. A 107S printer returns 790 in Dots. Also see %ALEN+ and %FORCET+

**NOTE!** The value can only be received.

<b>System Variable Name: -</b>	<b>=</b>	<b>SYSACARRIAGE</b>
<b>RecoverMode Identifier: -</b>	<b>=</b>	<b>ACARRIAGE</b>
<b>Termode Identifier: -</b>	<b>=</b>	<b>0XSYSACARRIAGE</b>
<b>Type of Units: -</b>	<b>=</b>	<b>Dots</b>
<b>Received Value: -</b>	<b>=</b>	<b>Value from Printer</b>
<b>Minimum Value: -</b>	<b>=</b>	<b>n/a</b>
<b>Maximum Value: -</b>	<b>=</b>	<b>n/a</b>
<b>Request Command: -</b>	<b>=</b>	<b>Esc0ZXSYSACARRIAGE 790 (790 FOR 107S)</b>
<b>Received String: -</b>	<b>=</b>	<b>Esc0XSYSACARRIAGE 790 (790 FOR 107S)</b>
<b>Send Command: -</b>	<b>=</b>	<b>n/a</b>

**ACOUNT = Number of Labels printed.**

**Description: - All Printers**

Returns the actual Number of Labels that the selected format has printed.

**NOTE!** The value can only be received.

<b>System Variable Name: -</b>	<b>=</b>	<b>SYSACOUNT</b>
<b>RecoverMode Identifier: -</b>	<b>=</b>	<b>ACOUNT</b>
<b>Termode Identifier: -</b>	<b>=</b>	<b>0XSYSACOUNT</b>
<b>Type of Units: -</b>	<b>=</b>	<b>Numeric</b>
<b>Received Value: -</b>	<b>=</b>	<b>Value from Printer</b>
<b>Minimum Value: -</b>	<b>=</b>	<b>n/a</b>
<b>Maximum Value: -</b>	<b>=</b>	<b>n/a</b>
<b>Request Command: -</b>	<b>=</b>	<b>Esc0ZXSYSACOUNT</b>
<b>Received String: -</b>	<b>=</b>	<b>Esc0XSYSACOUNT 0</b>
<b>Send Command: -</b>	<b>=</b>	<b>n/a</b>

**AFGATST = Special Code for testing memory leaks.**

**Description: - Intermittent Printers**

Used to test for memory leaks, designed for a specific Customer requirement.

Checks memory settings, and looking for changes.

<b>System Variable Name: -</b>	<b>=</b>	<b>SYSAFGATST</b>
<b>RecoverMode Identifier: -</b>	<b>=</b>	<b>AFGATST</b>
<b>Termode Identifier: -</b>	<b>=</b>	<b>0XSYSAFGATST</b>
<b>Type of Units: -</b>	<b>=</b>	<b>Integer</b>
<b>Default Value: -</b>	<b>=</b>	<b>0</b>
<b>Minimum Value: -</b>	<b>=</b>	<b>0</b>
<b>Maximum Value: -</b>	<b>=</b>	<b>1</b>
<b>Request Command: -</b>	<b>=</b>	<b>Esc0ZXSYSAFGATST</b>
<b>Received String: -</b>	<b>=</b>	<b>Esc0XSYSAFGATST 0</b>
<b>Send Command: -</b>	<b>=</b>	<b>Esc0XSYSAFGATST 0</b>

**ALEN = Assumed Print Area.**

**Description: - Intermittent Printers**

Used in conjunction with %**ORCET**+and %**CARRIAGE**+

When forcing a printer type, this returns an area in Dots of the assumed printer being forced ie

“**FORCET 107S**” returns a print area of 640 in Dots. Also see %**CARRIAGE**+

**NOTE!** The value can only be received.

<b>System Variable Name: -</b>	<b>=</b>	<b>SYSALEN</b>
<b>RecoverMode Identifier: -</b>	<b>=</b>	<b>ALEN</b>
<b>Termode Identifier: -</b>	<b>=</b>	<b>0XSYSALEN</b>
<b>Type of Units: -</b>	<b>=</b>	<b>Dots</b>
<b>Received Value: -</b>	<b>=</b>	<b>Value from Printer</b>
<b>Minimum Value: -</b>	<b>=</b>	<b>n/a</b>
<b>Maximum Value: -</b>	<b>=</b>	<b>n/a</b>
<b>Request Command: -</b>	<b>=</b>	<b>Esc0ZXSYSALEN 0</b>
<b>Received String: -</b>	<b>=</b>	<b>Esc0XSYSALEN 640 (640 FOR 107S)</b>
<b>Send Command: -</b>	<b>=</b>	<b>n/a</b>

**ASPEED = Actual speed of the last print.**

**Description: - All Printers**

This is very useful when checking the speed of the shaft encoder against the actual machine speed when there's a lot of machine speed fluctuation & or variation.

**NOTE!** The value can only be received.

<b>System Variable Name: -</b>	<b>=</b>	<b>SYSASPEED</b>
<b>RecoverMode Identifier: -</b>	<b>=</b>	<b>ASPEED</b>
<b>Termode Identifier: -</b>	<b>=</b>	<b>0XSYSASPEED</b>
<b>Type of Units: -</b>	<b>=</b>	<b>Millimetres per second</b>

<b>Received Value: -</b>	<b>=</b>	<b>Value from Printer</b>
<b>Minimum Value: -</b>	<b>=</b>	<b>n/a</b>
<b>Maximum Value: -</b>	<b>=</b>	<b>n/a</b>
<b>Request Command: -</b>	<b>=</b>	<b>Esc0ZXSYSASPEED</b>
<b>Received String: -</b>	<b>=</b>	<b>Esc0XSYSASPEED 10</b>
<b>Send Command: -</b>	<b>=</b>	<b>n/a</b>

**ATEMP = Actual Print Head Temperature C°**

**Description: - All Printers**

Returns the actual print head temperature in Celsius.

**NOTE!** The value can only be received.

<b>System Variable Name: -</b>	<b>=</b>	<b>SYSATEMP</b>
<b>RecoverMode Identifier: -</b>	<b>=</b>	<b>ATEMP</b>
<b>Termode Identifier: -</b>	<b>=</b>	<b>0XSYSATEMP</b>
<b>Type of Units: -</b>	<b>=</b>	<b>Degrees Centigrade</b>
<b>Received Value: -</b>	<b>=</b>	<b>Value from the Printer</b>
<b>Minimum Value: -</b>	<b>=</b>	<b>n/a</b>
<b>Maximum Value: -</b>	<b>=</b>	<b>n/a</b>
<b>Request Command: -</b>	<b>=</b>	<b>Esc0ZXSYSATEMP</b>
<b>Received String: -</b>	<b>=</b>	<b>Esc0XSYSATEMP 22</b>
<b>Send Command: -</b>	<b>=</b>	<b>n/a</b>

**BARMT = UPCA & UPCE middle text variable**



**Description: - All Printers**

This variable you can change the font size used in the main/middle text off a UPCA and UPCE barcodes. The original size can be viewed in the variable **%RBARMT**

<b>System Variable Name: -</b>	<b>=</b>	<b>SYSBARMT</b>
<b>RecoverMode Identifier: -</b>	<b>=</b>	<b>BARMT</b>
<b>Termode Identifier: -</b>	<b>=</b>	<b>0XSYSBARMT</b>
<b>Type of Units: -</b>	<b>=</b>	<b>Point Size</b>
<b>Received Value: -</b>	<b>=</b>	<b>Value from the Printer</b>
<b>Minimum Value: -</b>	<b>=</b>	<b>0</b>
<b>Maximum Value: -</b>	<b>=</b>	<b>16</b> (Send a to large point size will distort the barcode)
<b>Request Command: -</b>	<b>=</b>	<b>Esc0ZXSYSBARMT</b>
<b>Received String: -</b>	<b>=</b>	<b>Esc0XSYSBARMT 0</b>
<b>Send Command: -</b>	<b>=</b>	<b>Esc0XSYSBARMT 0</b>

**BARST = UPCA & UPCE small text variable**



**Description: - All Printers**

This variable you can change the font size used on the outside text off a UPCA and UPCE barcodes. (The zero 0 and 5) The original size can be viewed in the variable **%RBARST**

<b>System Variable Name: -</b>	<b>=</b>	<b>SYSBARST</b>
<b>RecoverMode Identifier: -</b>	<b>=</b>	<b>BARST</b>
<b>Termode Identifier: -</b>	<b>=</b>	<b>0XSYSBARST</b>
<b>Type of Units: -</b>	<b>=</b>	<b>Point Size</b>
<b>Received Value: -</b>	<b>=</b>	<b>Value from the Printer</b>
<b>Minimum Value: -</b>	<b>=</b>	<b>0</b>
<b>Maximum Value: -</b>	<b>=</b>	<b>16</b> (Send a to large point size will distort the barcode)
<b>Request Command: -</b>	<b>=</b>	<b>Esc0ZXSYSBARST</b>
<b>Received String: -</b>	<b>=</b>	<b>Esc0XSYSBARST 0</b>
<b>Send Command: -</b>	<b>=</b>	<b>Esc0XSYSBARCT 0</b>

**BAUD = Printer Baud rate (Bits per second)**

**Description: - All Printers**

This system variable **%SYSBAUD** allows the baud rate to be changed using RecoverMode or Termode. This Variable will only work with EEPROM Version 6.3 and above. To activate the baud rate, the Printer has to be Re-Booted.

<b>System Variable Name: -</b>	<b>=</b>	<b>SYSBAUD</b>
<b>RecoverMode Identifier: -</b>	<b>=</b>	<b>BAUD</b>
<b>Termode Identifier: -</b>	<b>=</b>	<b>0XSYSBAUD</b>
<b>Type of Units: -</b>	<b>=</b>	<b>Bits per second</b>
<b>Default Value: -</b>	<b>=</b>	<b>115200</b>
<b>Minimum Value: -</b>	<b>=</b>	<b>4800</b>
<b>Maximum Value: -</b>	<b>=</b>	<b>115200</b>
<b>Request Command: -</b>	<b>=</b>	<b>Esc0ZXSYSBAUD</b>
<b>Received String: -</b>	<b>=</b>	<b>Esc0XSYSBAUD 115200</b>
<b>Send Command: -</b>	<b>=</b>	<b>Esc0XSYSBAUD 115200</b>

**BFILE = Selecting a Different Burn File**

**Description: - All Printers**

Do not try to use this command, unless you are sure you know what you are doing. This feature allows the use of additional burn files created to suit special applications. This is a very time consuming exercise, and would need extensive testing.

Please contact your local representative for full technical information.

Allows the user to select a different burn file from the file store.

<b>System Variable Name: -</b>	<b>=</b>	<b>SYSBFILE</b>
<b>RecoverMode Identifier: -</b>	<b>=</b>	<b>BFILE</b>
<b>Termode Identifier: -</b>	<b>=</b>	<b>0XSYSBFILE</b>
<b>Type of Units: -</b>	<b>=</b>	<b>Integer</b>
<b>Received Value: -</b>	<b>=</b>	<b>Name of File</b>
<b>Minimum Value: -</b>	<b>=</b>	<b>n/a</b>
<b>Maximum Value: -</b>	<b>=</b>	<b>n/a</b>
<b>Request Command: -</b>	<b>=</b>	<b>Esc0ZXSYSBFILE</b>
<b>Received String: -</b>	<b>=</b>	<b>Esc0XSYSBFILE (Name of File)</b>
<b>Send Command: -</b>	<b>=</b>	<b>Esc0XSYSBFILE (Name of File)</b>

**BLIFT = Not used, obsolete**

**BPDEL = Time in seconds the 24V Printhead Supply is on.**

**Description: - All Printers**

When set to zero (0) the Printhead is only energised whilst printing.

Before changing this value, please consult your local dealer for more detailed information.

<b>System Variable Name: -</b>	<b>=</b>	<b>SYSBPDEL</b>
<b>RecoverMode Identifier: -</b>	<b>=</b>	<b>BPDEL</b>
<b>Termode Identifier: -</b>	<b>=</b>	<b>0XSYSBPDEL</b>
<b>Type of Units: -</b>	<b>=</b>	<b>Second</b>
<b>Default Value: -</b>	<b>=</b>	<b>0</b>
<b>Minimum Value: -</b>	<b>=</b>	<b>0</b>
<b>Maximum Value: -</b>	<b>=</b>	<b>10</b>
<b>Request Command: -</b>	<b>=</b>	<b>Esc0ZXSYSBPDEL</b>
<b>Received String: -</b>	<b>=</b>	<b>Esc0XSYSBPDEL 0</b>
<b>Send Command: -</b>	<b>=</b>	<b>Esc0XSYSBPDEL 0</b>

**BURN1 = Minimum burn value allowed**

**Description: - All Printers**

The minimum burn value allowed, set within the Printer. Do not change these settings unless you know what you are doing, you could damage the Print Head.

<b>System Variable Name: -</b>	<b>=</b>	<b>SYSBURN1</b>
<b>RecoverMode Identifier: -</b>	<b>=</b>	<b>BURN1</b>
<b>Termode Identifier: -</b>	<b>=</b>	<b>0XSYSBURN1</b>
<b>Type of Units: -</b>	<b>=</b>	<b>Micro- seconds</b>
<b>Default Value: -</b>	<b>=</b>	<b>50</b>
<b>Minimum Value: -</b>	<b>=</b>	<b>50</b>
<b>Maximum Value: -</b>	<b>=</b>	<b>10000</b>

**Request Command: -** = **Esc0ZXSYSBURN1**  
**Received String: -** = **Esc0XSYSBURN1 50**  
**Send Command: -** = **Esc0XSYSBURN1 50**

**BURN2 = Maximum burn value allowed**

**Description: - All Printers**

The maximum burn value allowed, set within the Printer. Do not change these settings unless you know what you are doing, you could damage the Print Head.

**System Variable Name: -** = **SYSBURN1**  
**RecoverMode Identifier: -** = **BURN20**  
**Termode Identifier: -** = **0XSYSBURN2**  
**Type of Units: -** = **Micro- seconds**  
**Default Value: -** = **500**  
**Minimum Value: -** = **400**  
**Maximum Value: -** = **10000**  
**Request Command: -** = **Esc0ZXSYSBURN2**  
**Received String: -** = **Esc0XSYSBURN2 500**  
**Send Command: -** = **Esc0XSYSBURN2 500**

**CASS = External Control of Cassette (No mini-terminal)**

**Description: - All Printers**

Special feature that allows the computer to talk to a printer and reset the cassette. You can then decide whether the ribbon qty is reset or not, when the cassette has been replaced. Valid Range 4-5  
 Read a value of 0, normal operation cassette ON and working.

Read a value of 1, Ribbon break.

Read a value of 2, cassette removed.

Read a value of 3, cassette replaced.

If the cassette is removed again the value will go back to 2.

Send a value of 4 if the ribbon has not been replaced,

Send a value of 5 if the ribbon has been replaced.

Value is not saved and will read as 0 once this has been done.

**System Variable Name: -** = **SYSCASS**  
**RecoverMode Identifier: -** = **CASS**  
**Termode Identifier: -** = **0XSYSCASS**  
**Type of Units: -** = **Integer**  
**Default Value: -** = **0**  
**Minimum Value: -** = **0**  
**Maximum Value: -** = **5**  
**Request Command: -** = **Esc0ZXSYSYSCASS**  
**Received String: -** = **Esc0XSYSCASS 0**  
**Send Command: -** = **Esc0XSYSCASS 0**

**CCACTION = Count Complete activating the Stop Relay.**

**Description: - All Printers.**

Allows the user to stop the Count Complete activating the Stop Relay (Relay 3) Useful when using a database, and you do not want the printer to stop a labeller etc. Range 0 to 1.

Set as 1 to de-activate the relay.

**System Variable Name: -** = **SYSCCACTION**  
**RecoverMode Identifier: -** = **CCACTION**  
**Termode Identifier: -** = **0XSYSCCACTION**  
**Type of Units: -** = **Integer**  
**Default Value: -** = **0**  
**Minimum Value: -** = **0**  
**Maximum Value: -** = **1**  
**Request Command: -** = **Esc0ZXSYSYSCCACTION**  
**Received String: -** = **Esc0XSYSYSCCACTION 0**  
**Send Command: -** = **Esc0XSYSYSCCACTION 0**

**CEFIXED = Fixed burn calculation****Description: - Continuous Printers Only**

CEFIXED allows the user to set a fixed speed of the shaft encoder enabling the calculation for the burn to be the same for every print. Used with intermittent Labelling Machines that have a fast start and stop accelerations with a constant speed and the printer area over a 160mm in length.  
Range 0 - 1000mm/sec

**System Variable Name: - = SYSCEFIXED**  
**RecoverMode Identifier: - = CEFIXED**  
**Termode Identifier: - = 0XSYSCEFIXED**  
**Type of Units: - = Millimetres per second**  
**Default Value: - = 0**  
**Minimum Value: - = 0**  
**Maximum Value: - = 1000**  
**Request Command: - = Esc0ZXSYSCEFIXED**  
**Received String: - = Esc0XSYSCEFIXED 1000**  
**Send Command: - = Esc0XSYSCEFIXD**

**CEMAX = Maximum Continuous print speed****Description: - Continuous Printers Only**

Maximum Continuous print speed, limits the maximum speed, if you have an erratic parent machine that is going over the required print speed. Set this value just above the required speed, this limits the printer from actually going above the required speed. Range 0 - 1000mm/sec

**System Variable Name: - = SYSCEMAX**  
**RecoverMode Identifier: - = CEMAX**  
**Termode Identifier: - = 0XSYSCEMAX**  
**Type of Units: - = Millimetres per second**  
**Default Value: - = 1000**  
**Minimum Value: - = 0**  
**Maximum Value: - = 1000**  
**Request Command: - = Esc0ZXSYSCEMAX**  
**Received String: - = Esc0XSYSCEMAX 1000**  
**Send Command: - = Esc0XSYSCEMAX**

**CEMCLR = Cancels any print signals (triggers)****Description: - Continuous Printers Only**

Continuous only. Cancels any print signals (triggers) stored in memory if the speed goes below the value set in **CEMIN**

**System Variable Name: - = SYSCEMCLR**  
**RecoverMode Identifier: - = CEMCLR**  
**Termode Identifier: - = 0XSYSCEMCLR**  
**Type of Units: - = Integer**  
**Default Value: - = 0**  
**Minimum Value: - = 0**  
**Maximum Value: - = 1**  
**Request Command: - = Esc0ZXSYSCEMCLR**  
**Received String: - = Esc0XSYSCEMCLR 0**  
**Send Command: - = Esc0XSYSCEMCLR 0**

**CEMIN = Minimum Value at which the Encoder is Monitored.****Description: - Continuous Printers Only**

Continuous only. When the Minimum set speed is reached this ignores all print and shaft encoder pulses. This is very useful when the substrate is moving or high vibration causing the shaft encoder to oscillate at low speed. Value 0 to 50mm / sec. Default 0

**System Variable Name: - = SYSCEMIN**  
**RecoverMode Identifier: - = CEMIN**  
**Termode Identifier: - = 0XSYSCEMIN**

<b>Type of Units: -</b>	=	<b>Millimetres per second</b>
<b>Default Value: -</b>	=	<b>0</b>
<b>Minimum Value: -</b>	=	<b>0</b>
<b>Maximum Value: -</b>	=	<b>50</b>
<b>Request Command: -</b>	=	<b>Esc0ZXSYSCEMIN</b>
<b>Received String: -</b>	=	<b>Esc0XSYSCEMIN 0</b>
<b>Send Command: -</b>	=	<b>Esc0XSYSCEMIN 0</b>

**CFRPT2 = Special Variable that allows Specific Controls on Changing Text Information.**

**“DO NOT ACTIVATE UNLESS YOU ARE SURE”**

**Description: - All Printers**

The actual documents “**CFR21**” are a total minefield. New Hex code has been changed to suit the Customers interpretation of the requirements to be compliant to the FDA (Foods & Drug Administration U.S.A)

<b>System Variable Name: -</b>	=	<b>SYSCFRPT2</b>
<b>RecoverMode Identifier: -</b>	=	<b>CFRPT2</b>
<b>Termode Identifier: -</b>	=	<b>0XSYSCFRPT2</b>
<b>Type of Units: -</b>	=	<b>Integer</b>
<b>Default Value: -</b>	=	<b>0</b>
<b>Minimum Value: -</b>	=	<b>0</b>
<b>Maximum Value: -</b>	=	<b>2</b>
<b>Request Command: -</b>	=	<b>Esc0ZXSYS CFRPT2</b>
<b>Received String: -</b>	=	<b>Esc0XSYSCFRPT2 0</b>
<b>Send Command: -</b>	=	<b>Esc0XSYSCFRPT2</b>

**Value's Set: -**

**CFRPT2 0** Standard Printer.

**CFRPT2 1** When %Printer Locked+you cannot send or receive any information from any Computer. (Serial port is blocked)

**CFRPT2 2** When %Printer Locked+you cannot send any information from any computer. If sending any data to the Printer an error message %Printer locked 142, 900+ You can receive any information from Recovermode, Termode or Codesoft.

In either mode you can unlock the Printer by Pressing 1 on the keypad and entering the password %0+(Default 0) this will delete the format from the Print & Destination Memory.

To return the Printer to a standard Printer CFRPT2 0 you have to CINEW the Printer For more detailed information see Document **CFR21 Part II.doc**

**CHARSET = Code page Western or Central European**

**Description: - All Printers**

This variable allows the possibility to set a different code page at this moment these two.  
Value 1252 = Western  
Value 1250 = Central European

<b>System Variable Name: -</b>	=	<b>SYSCCHARSET</b>
<b>RecoverMode Identifier: -</b>	=	<b>CHARSET</b>
<b>Termode Identifier: -</b>	=	<b>0XSYSCCHARSET</b>
<b>Type of Units: -</b>	=	<b>Integer</b>
<b>Default Value: -</b>	=	<b>1252</b>
<b>Minimum Value: -</b>	=	<b>n/a</b>
<b>Maximum Value: -</b>	=	<b>n/a</b>
<b>Request Command: -</b>	=	<b>Esc0ZXSYSCHARSET</b>
<b>Received String: -</b>	=	<b>Esc0XSYSCCHARSET 1252</b>
<b>Send Command: -</b>	=	<b>Esc0XSYSCCHARSET 1252</b>



**CODOUBLE = Changing of the Resolution of a Printer in the "Y" axis**

**Special Variable that allows High Speed Printing utilising only 6 dots per Millimetre.**

**Description: - Continuous Printers Only**

Special feature that allows changing of the resolution of a printer in the "Y" axis to 6 dots per millimetre. (Special applications Only) 0 = OFF, 1 = ON.

<b>System Variable Name: -</b>	<b>=</b>	<b>SYSCODOUBLE</b>
<b>RecoverMode Identifier: -</b>	<b>=</b>	<b>CODOUBLE</b>
<b>Termode Identifier: -</b>	<b>=</b>	<b>0XSYSCODOUBLE</b>
<b>Type of Units: -</b>	<b>=</b>	<b>Integer</b>
<b>Default Value: -</b>	<b>=</b>	<b>0</b>
<b>Minimum Value: -</b>	<b>=</b>	<b>0</b>
<b>Maximum Value: -</b>	<b>=</b>	<b>1</b>
<b>Request Command: -</b>	<b>=</b>	<b>Esc0ZXSYSCODOUBLE</b>
<b>Received String: -</b>	<b>=</b>	<b>Esc0XSYSCODOUBLE 0</b>
<b>Send Command: -</b>	<b>=</b>	<b>Esc0XSYSCODOUBLE 0</b>

**COENCSW = Ribbon Index Encoder Control****Description: - Continuous Printers Only.**

Encoder Switch only, disables the automatic speed link to the printer. Set to 1 to disable the speed link, allows the ribbon indexing to be independent. "Default setting = 0 (automatic speed link)"

<b>System Variable Name: -</b>	<b>=</b>	<b>SYSCCACTION</b>
<b>RecoverMode Identifier: -</b>	<b>=</b>	<b>CCACTION</b>
<b>Termode Identifier: -</b>	<b>=</b>	<b>0XSYSCCACTION</b>
<b>Type of Units: -</b>	<b>=</b>	<b>Integer</b>
<b>Default Value: -</b>	<b>=</b>	<b>0</b>
<b>Minimum Value: -</b>	<b>=</b>	<b>0</b>
<b>Maximum Value: -</b>	<b>=</b>	<b>1</b>
<b>Request Command: -</b>	<b>=</b>	<b>Esc0ZXSYSCCACTION</b>
<b>Received String: -</b>	<b>=</b>	<b>Esc0XSYSCCACTION 0</b>
<b>Send Command: -</b>	<b>=</b>	<b>Esc0XSYSCCACTION 0</b>

**COFILT = This parameter is a filter for the shaft encoder input.****Description: - Continuous Printers Only**

Continuous only. This parameter is a filter for the shaft encoder input.

The values are 1 to 5. (Default = 1) The higher the value the filtering is stronger.

It has been found with an error "**Burn Duty too High**" the machine speed was recorded at 1031mm/sec. This could be due to shaft encoder bounce or noise. The speed being logged using Termode from the variable "**SYASPEED**". The actual machine top speed was 580mm / sec. Make sure the encoder screen is tied to ground (earth).

<b>System Variable Name: -</b>	<b>=</b>	<b>SYSCOFILT</b>
<b>RecoverMode Identifier: -</b>	<b>=</b>	<b>COFILT</b>
<b>Termode Identifier: -</b>	<b>=</b>	<b>0XSYSCOFILT</b>
<b>Type of Units: -</b>	<b>=</b>	<b>Integer</b>
<b>Default Value: -</b>	<b>=</b>	<b>1</b>
<b>Minimum Value: -</b>	<b>=</b>	<b>1</b>
<b>Maximum Value: -</b>	<b>=</b>	<b>5</b>
<b>Request Command: -</b>	<b>=</b>	<b>Esc0ZXSYSCOFILT</b>
<b>Received String: -</b>	<b>=</b>	<b>Esc0XSYSCOFILT 1</b>
<b>Send Command: -</b>	<b>=</b>	<b>Esc0XSYSCOFILT 1</b>

**COHDEL = Ribbon De-acceleration in steps**

**NOTE:** - This can help stopping scuffing marks on the product, being left from the actual ribbon.

**Description: - Continuous Printers Only**

This variable controls after finishing printing, where the ribbon starts de-accelerating.

Incremented in Motor steps, Valid range = 0 . 100, dependent on Pressure and Printhead height.

Height	COHDEL Max Value
0.5	4
1.0	10
1.5	16
2.0	20
2.5	28
3.0	34

The above values work with all pressure ranges, from 20 to 35.

**System Variable Name:** - = **SYSCODEL**  
**RecoverMode Identifier:** - = **COHDEL**  
**Termode Identifier:** - = **0XSYSCOHDEL**  
**Type of Units:** - = **Steps**  
**Default Value:** - = **0**  
**Minimum Value:** - = **0**  
**Maximum Value:** - = **100**  
**Request Command:** - = **Esc0ZXSYSCOHDEL**  
**Received String:** - = **Esc0XSYSCOHDEL**  
**Send Command:** - = **Esc0XSYSCOHDEL**

**COMTRIG = Multi-image Printing Only**

**Description: - Continuous Printers Only**

Multi - image Printers Only. This a special command that specifies the sequence and order of prints required, for a Multi-image Printer. For more information see Escape Sequences Manual Version 2. Command usually used within a format.

**System Variable Name:** - = **SYSCOMTRIG**  
**RecoverMode Identifier:** - = **COMTRIG**  
**Termode Identifier:** - = **0XSYSCOMTRIG**  
**Type of Units:** - = **Integer**  
**Default Value:** - = **see manual**  
**Minimum Value:** - = **see manual**  
**Maximum Value:** - = **see manual**  
**Request Command:** - = **Esc0ZXSYSCOMTRIG**  
**Received String:** - = **Esc0XSYSCOMTRIG**  
**Send Command:** - = **Esc0XSYSCOMTRIG**

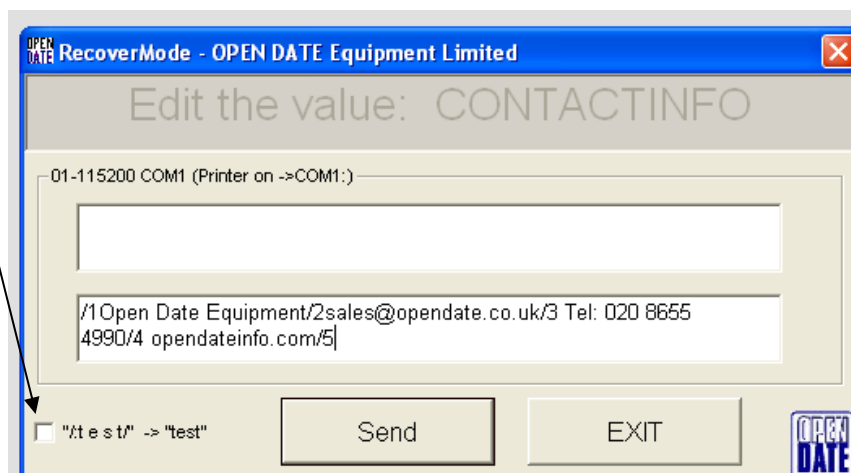
**CONTACTINFO = Allows the user to change the information shown in Menu 7 of the Mini Terminal**

**Description: - All Printers**

RecoverMode version 3.0.3 Firmware Version A305010x.hex & N305014x.hex and above

In RecoverMode double click on the variable CONTACTINFO

Uncheck the box

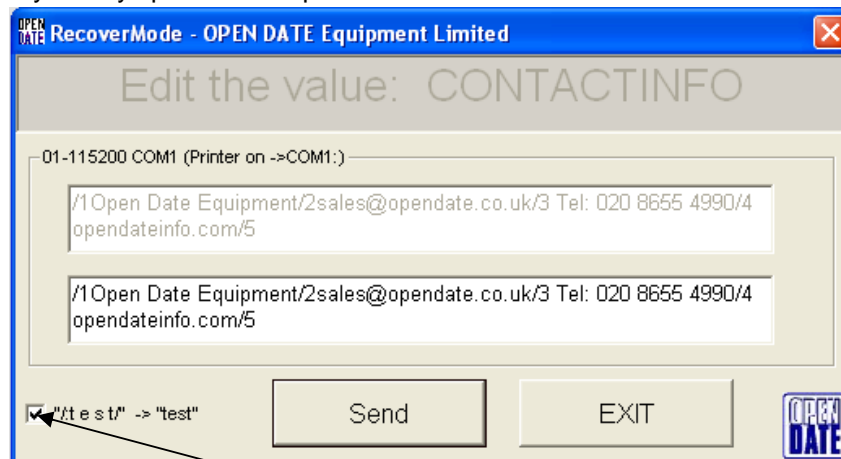


Continued on next Page

Type /1Then your text max 20/2 The second line /3 third line /4 fourth line /5

### Max between 20

Only twenty spaces and alphanumeric characters on each line



To re edit the Information Uncheck the Box

**COOVERRUN = Disables "Prints to close for high speed" Error Messages**

#### Description: - Continuous Printers Only

Disables %Rprints to close for high speed+error message.

"NOT FOR CROSSWEBB INSTALLATIONS" 0 = OFF, 1 = ON

System Variable Name: -	=	SYSCOOVERRUN
RecoverMode Identifier: -	=	COOVERRUN
Termode Identifier: -	=	0XSYSCOOVERRUN
Type of Units: -	=	Integer
Default Value: -	=	0
Minimum Value: -	=	0
Maximum Value: -	=	1
Request Command: -	=	Esc0ZXSYSCOOVERRUN
Received String: -	=	Esc0XSYSCOOVERRUN 0
Send Command: -	=	Esc0XSYSCOOVERRUN 0

**CORFAST = Print head remains down when printing**

#### Description: - Continuous Printers Only

The print head remains down during the total number of Prints entered in %CORNUM / SYSCORLEN+The pitch between prints can set in %CORLEN / SYSCORLEN+to a minimum 3mm

System Variable Name: -	=	SYSCORFAST
RecoverMode Identifier: -	=	COFAST
Termode Identifier: -	=	0XSYSCORFAST
Type of Units: -	=	Integer
Default Value: -	=	0
Minimum Value: -	=	0
Maximum Value: -	=	1
Request Command: -	=	Esc0ZXSYSCOFILT
Received String: -	=	Esc0XSYSCOFILT 0
Send Command: -	=	Esc0XSYSCOFILT 0

**CORLEN = Pitch Between Start of First Print until Start of Next Print**

#### Description: - Continuous Printers Only

Used in conjunction with %CORNUM+Sets the actual pitch between prints

Set Pitch of prints (multi-print only) Please remember this value must be at least the format length + 30mm. (When CORFAST is on, this value must be the image length plus 3mm)

Minimum pitch would be dependent on speed, size of format and other system parameter settings. See CORFAST

Continued on next Page

**System Variable Name: - = SYSCORLEN**  
**RecoverMode Identifier: - = CORLEN**  
**Termode Identifier: - = 0XSYSCORLEN**  
**Type of Units: - = Millimetres**  
**Default Value: - = 0**  
**Minimum Value: - = 0**  
**Maximum Value: - = 20**  
**Request Command: - = Esc0ZXSYSCORLEN**  
**Received String: - = Esc0XSYSCORLEN**  
**Send Command: - = Esc0XSYSCORLEN**

**CORNOU = Real time updates not allowed.**

**Description: - Continuous Printers Only**

When using Cross web Settings, does not allow time updates between prints of one print sweep.  
0 = Off, 1 = ON.

**System Variable Name: - = SYSCORNOU**  
**RecoverMode Identifier: - = CORNOU**  
**Termode Identifier: - = 0XSYSCORLEN**  
**Type of Units: - = Integer**  
**Default Value: - = 0**  
**Minimum Value: - = 0**  
**Maximum Value: - = 1**  
**Request Command: - = Esc0ZXSYSCORLEN**  
**Received String: - = Esc0XSYSCORLEN 0**  
**Send Command: - = Esc0XSYSCORLEN 0**

**CORNUM = Sets the number of prints, which can be printed with one print signal input**

**Description: - Continuous Printers Only**

Sets the number of prints, which can be printed with one print signal input. Maximum number of prints is 20. The System variable "DEFDEL / SYSDEFDEL" may need to be changed.

**System Variable Name: - = SYSCORNUM**  
**RecoverMode Identifier: - = CORNUM**  
**Termode Identifier: - = 0XSYSCORNUM**  
**Type of Units: - = Numeric value**  
**Default Value: - = 0**  
**Minimum Value: - = 0**  
**Maximum Value: - = 20**  
**Request Command: - = Esc0ZXSYSCORNUM**  
**Received String: - = Esc0XSYSCORNUM 0**  
**Send Command: - = Esc0XSYSCORNUM 0**

**CORRNEW = Ribbon Gap Algorithm**

**Description: - Continuous Printers Only**

Activates and optimises ribbon gaps, changes the algorithms (calculations) 0 = OFF, 1 = ON

**System Variable Name: - = SYSCORRNEW**  
**RecoverMode Identifier: - = CORRNEW**  
**Termode Identifier: - = 0XSYSCORRNEW**  
**Type of Units: - = Integer**  
**Default Value: - = 1**  
**Minimum Value: - = 0**  
**Maximum Value: - = 1**  
**Request Command: - = Esc0ZXSYSCORRNEW**  
**Received String: - = Esc0XSYSCORRNEW 0**  
**Send Command: - = Esc0XSYSCORRNEW 0**

**COUNTWB = Counter memory**  
Hex code A305084.HEX and N305085.HEX and above

**Description: - All Printers**

Set to one, the counter value for the next print job is stored in memory. If the last printed label was 1202. When the label is reselected from the storage, the next print would be 1203.

When you have two different counter fields in the same format changing one field say Counter1 Counter0 will restart from the last saved value.

If you need to Change say Counter1 and require Counter0 to maintain its last printed counted value, reselect the same format from the storage memory this will save the last printed value to memory, **do this before you edit Counter1.**

<b>System Variable Name: -</b>	=	<b>SYSCOUNTWB</b>
<b>RecoverMode Identifier: -</b>	=	<b>COUNTWB</b>
<b>Termode Identifier: -</b>	=	<b>0XSYSCOUNTWB</b>
<b>Type of Units: -</b>	=	<b>Integer</b>
<b>Default Value: -</b>	=	<b>0</b>
<b>Minimum Value: -</b>	=	<b>0</b>
<b>Maximum Value: -</b>	=	<b>1</b>
<b>Request Command: -</b>	=	<b>Esc0ZXSYSCOUNTWB</b>
<b>Received String: -</b>	=	<b>Esc0XSYSCOUNTWB 0</b>
<b>Send Command: -</b>	=	<b>Esc0XSYSCOUNTWB 0</b>

**DATE = Set the Actual Printer Date**

**Description: - All Printers**

The actual Printer Date

<b>System Variable Name: -</b>	=	<b>SYSDATE</b>
<b>RecoverMode Identifier: -</b>	=	<b>DATE</b>
<b>Termode Identifier: -</b>	=	<b>0XSYSDATE</b>
<b>Type of Units: -</b>	=	<b>String</b>
<b>Received Value: -</b>	=	<b>Date String</b>
<b>Minimum Value: -</b>	=	<b>n/a</b>
<b>Maximum Value: -</b>	=	<b>n/a</b>
<b>Request Command: -</b>	=	<b>Esc0ZXSYSDATE</b>
<b>Received String: -</b>	=	<b>Esc0XSYSDATE 17/06/2005</b>
<b>Send Command: -</b>	=	<b>Esc0XSYSDATE 17/06/2005</b>

**DAY = Day of the week**

**Description: - All Printers**

The day of the week "**Monday**" This can be customized to suit the language required. And can be changed using Recovermode with a Customised File or with Termode.

<b>System Variable Name: -</b>	=	<b>SYSDAY</b>
<b>RecoverMode Identifier: -</b>	=	<b>DAY</b>
<b>Termode Identifier: -</b>	=	<b>0XSYSDAY</b>
<b>Type of Units: -</b>	=	<b>String</b>
<b>Default Value: -</b>	=	<b>Monday, Tuesday etc.</b>
<b>Minimum Value: -</b>	=	<b>n/a</b>
<b>Maximum Value: -</b>	=	<b>n/a</b>
<b>Request Command: -</b>	=	<b>Esc0ZXSYSDAY</b>
<b>Received String: -</b>	=	<b>Esc0XSYSDAY Monday, Tuesday etc.</b>
<b>Send Command: -</b>	=	<b>Esc0XSYSDAY Monday, Tuesday etc.</b>

**DAY1 = First Day of the Week**

**Description: - All Printers**

The day of the week "**1**" This can be customized to suit the customer. Monday = 1. The default settings are 1 to 7. And can be changed using Recovermode with a Customized File or with Termode.

<b>System Variable Name:</b> -	=	<b>SYSDAY1</b>
<b>RecoverMode Identifier:</b> -	=	<b>DAY1</b>
<b>Termode Identifier:</b> -	=	<b>0XSYSDAY1</b>
<b>Type of Units:</b> -	=	<b>Alphanumeric String 1,2,3,4,5,6,7 or A, B, C etc.</b>
<b>Default Value:</b> -	=	<b>1,2,3,4,5,6,7</b>
<b>Minimum Value:</b> -	=	<b>n/a</b>
<b>Maximum Value:</b> -	=	<b>n/a</b>
<b>Request Command:</b> -	=	<b>Esc0ZXSYSDAY1</b>
<b>Received String:</b> -	=	<b>Esc0XSYSDAY1 1,2,3,4,5,6,7</b>
<b>Send Command:</b> -	=	<b>Esc0XSYSDAY1 1,2,3,4,5,6,7</b>

**DAY3 = Day of the Week, 3 Alphabetical Characters**

**Description: - All Printers**

The day of the week "**MON**" This can be customized to suit the language required. And can be changed using Recovermode With a Customised File or with Termode.

<b>System Variable Name:</b> -	=	<b>SYSDAY3</b>
<b>RecoverMode Identifier:</b> -	=	<b>DAY3</b>
<b>Termode Identifier:</b> -	=	<b>0XSYSDAY3</b>
<b>Type of Units:</b> -	=	<b>String</b>
<b>Default Value:</b> -	=	<b>MON, TUE, WED, THU, FRI, SAT, SUN</b>
<b>Minimum Value:</b> -	=	<b>n/a</b>
<b>Maximum Value:</b> -	=	<b>n/a</b>
<b>Request Command:</b> -	=	<b>Esc0ZXSYSDAY3</b>
<b>Received String:</b> -	=	<b>Esc0XSYSDAY3 MON, TUE, WED etc.</b>
<b>Send Command:</b> -	=	<b>Esc0XSYSDAY3 MON, TUE, WED etc.</b>

**DEFAB = Default Burn A to B**

**Description: - All Printers**

The default value from direction A to B set within the Printer.

<b>System Variable Name:</b> -	=	<b>SYSDEFAB</b>
<b>RecoverMode Identifier:</b> -	=	<b>DEFAB</b>
<b>Termode Identifier:</b> -	=	<b>0XSYSDEFAB</b>
<b>Type of Units:</b> -	=	<b>Micro- second</b>
<b>Default Value:</b> -	=	<b>170</b>
<b>Minimum Value:</b> -	=	<b>50</b>
<b>Maximum Value:</b> -	=	<b>500</b>
<b>Request Command:</b> -	=	<b>Esc0ZXSYSDEFAB</b>
<b>Received String:</b> -	=	<b>Esc0XSYSDEFAB</b>
<b>Send Command:</b> -	=	<b>Esc0XSYSDEFAB</b>

**DEFBA = Default Burn Value**

**Description: - All Printers**

The default value from direction B to A, set within the Printer.

<b>System Variable Name:</b> -	=	<b>SYSDEFBA</b>
<b>RecoverMode Identifier:</b> -	=	<b>DEFAB</b>
<b>Termode Identifier:</b> -	=	<b>0XSYSDEFBA</b>
<b>Type of Units:</b> -	=	<b>Micro- second</b>
<b>Default Value:</b> -	=	<b>170</b>
<b>Minimum Value:</b> -	=	<b>50</b>
<b>Maximum Value:</b> -	=	<b>500</b>
<b>Request Command:</b> -	=	<b>Esc0ZXSYSDEFBA</b>
<b>Received String:</b> -	=	<b>Esc0XSYSDEFBA</b>
<b>Send Command:</b> -	=	<b>Esc0XSYSDEFBA</b>

**DEFD = Default date type****Description: - All Printers**

Default date type: - 1 = dd/mm/yy, 2 = mm/dd/yy, 3 = yy/mm/dd

<b>System Variable Name: -</b>	<b>=</b>	<b>SYSDEFD</b>
<b>RecoverMode Identifier: -</b>	<b>=</b>	<b>DEFD</b>
<b>Termode Identifier: -</b>	<b>=</b>	<b>0XSYSDEFD</b>
<b>Type of Units: -</b>	<b>=</b>	<b>Integer</b>
<b>Default Value: -</b>	<b>=</b>	<b>1</b>
<b>Minimum Value: -</b>	<b>=</b>	<b>1</b>
<b>Maximum Value: -</b>	<b>=</b>	<b>3</b>
<b>Request Command: -</b>	<b>=</b>	<b>Esc0ZXSYSDEFD</b>
<b>Received String: -</b>	<b>=</b>	<b>Esc0XSYSDEFD 1</b>
<b>Send Command: -</b>	<b>=</b>	<b>Esc0XSYSDEFD 1</b>

**DEFDEL = Default Print Delay****Description: - Continuous Printers Only**

Continuous Printers, delay in millimetres from the Print Signal to the start of print.  
Cross web applications set too 20mm

<b>System Variable Name: -</b>	<b>=</b>	<b>SYSDEFDEL</b>
<b>RecoverMode Identifier: -</b>	<b>=</b>	<b>DEFDEL</b>
<b>Termode Identifier: -</b>	<b>=</b>	<b>0XSYSDEFDEL</b>
<b>Type of Units: -</b>	<b>=</b>	<b>Millimetres</b>
<b>Default Value: -</b>	<b>=</b>	<b>20</b>
<b>Minimum Value: -</b>	<b>=</b>	<b>18</b>
<b>Maximum Value: -</b>	<b>=</b>	<b>100</b>
<b>Request Command: -</b>	<b>=</b>	<b>Esc0ZXSYSDEFDEL</b>
<b>Received String: -</b>	<b>=</b>	<b>Esc0XSYSDEFDEL 20</b>
<b>Send Command: -</b>	<b>=</b>	<b>Esc0XSYSDEFDEL 20</b>

**DEFHO = Default Home offset****Description: - Intermittent Printers Only**

The default print position from the home sensor.

<b>System Variable Name: -</b>	<b>=</b>	<b>SYSDEFHO</b>
<b>RecoverMode Identifier: -</b>	<b>=</b>	<b>DEFHO</b>
<b>Termode Identifier: -</b>	<b>=</b>	<b>0XSYSDEFHO</b>
<b>Type of Units: -</b>	<b>=</b>	<b>Millimetres</b>
<b>Default Value: -</b>	<b>=</b>	<b>2</b>
<b>Minimum Value: -</b>	<b>=</b>	<b>0</b>
<b>Maximum Value: -</b>	<b>=</b>	<b>Dependent on the size of the Format and print area</b>
<b>Request Command: -</b>	<b>=</b>	<b>Esc0ZXSYSDEFHO</b>
<b>Received String: -</b>	<b>=</b>	<b>Esc0XSYSDEFHO 2</b>
<b>Send Command: -</b>	<b>=</b>	<b>Esc0XSYSDEFHO 2</b>

**DEFLL = Default Peel Height****Description: - All Printers**

Default Peel Height (Millimetres) This function allows the printhead to lift to the peel height, after printing but before the ribbon index. "On the Thermocode 2 Range not normally required."

<b>System Variable Name: -</b>	<b>=</b>	<b>SYSDEFLL</b>
<b>RecoverMode Identifier: -</b>	<b>=</b>	<b>DEFLL</b>
<b>Termode Identifier: -</b>	<b>=</b>	<b>0XSYSDEFLL</b>
<b>Type of Units: -</b>	<b>=</b>	<b>Millimetres</b>
<b>Default Value: -</b>	<b>=</b>	<b>0</b>
<b>Minimum Value: -</b>	<b>=</b>	<b>0</b>
<b>Maximum Value: -</b>	<b>=</b>	<b>10</b>
<b>Request Command: -</b>	<b>=</b>	<b>Esc0ZXSYSDEFLL</b>

Continued on next Page

**Received String: - = Esc0XSYSDEFL 0**  
**Send Command: - = Esc0XSYSDEFL 0**

**DEF0 = Default Print Offset**

**Description: - Continuous Printers Only**

Continuous Printers Only. Default Print Offset. Range 0 - 999 Millimetres

**System Variable Name: - = SYSDEFO**  
**RecoverMode Identifier: - = DEFO**  
**Termode Identifier: - = 0XSYSDEFO**  
**Type of Units: - = Millimetres**  
**Default Value: - = 0**  
**Minimum Value: - = 0**  
**Maximum Value: - = 999**  
**Request Command: - = Esc0ZXSYSDEFO**  
**Received String: - = Esc0XSYSDEFO 0**  
**Send Command: - = Esc0XSYSDEFO 0**

**DEFP = Default Pressure Value (Newton's)**

**Description: - All Printers**

Default Pressure Value (Newton's)

**System Variable Name: - = SYSDEFP**  
**RecoverMode Identifier: - = DEFP**  
**Termode Identifier: - = 0XSYSDEFP**  
**Type of Units: - = Millimetres**  
**Default Value: - = 20**  
**Minimum Value: - = 0**  
**Maximum Value: - = 35**  
**Request Command: - = Esc0ZXSYSDEFP**  
**Received String: - = Esc0XSYSDEFP 20**  
**Send Command: - = Esc0XSYSDEFP 20**

**DEFQ = Default Print Quantity**

**Description: - All Printers**

The number of prints required.

Used when using resident printer settings, also see Codesoft %Printer settings+

**System Variable Name: - = SYSDEFQ**  
**RecoverMode Identifier: - = DEFQ**  
**Termode Identifier: - = 0XSYSDEFQ**  
**Type of Units: - = Numeric value**  
**Default Value: - = 0**  
**Minimum Value: - = 0**  
**Maximum Value: - = 999999**  
**Request Command: - = Esc0ZXSYSDEFQ**  
**Received String: - = Esc0XSYSDEFQ 20**  
**Send Command: - = Esc0XSYSDEFQ 20**

**DEFROT = Default Image Rotation**

**Description: - All Printers**

Rotates (0 or 180 degrees) all the formats stored in the storage memory.

Very useful when two Printers are back too back printing the same format, one left hand the other right hand using the same format for both Printers. 0 = 0° rotation 2 = 180° rotation

**System Variable Name: - = SYSDEFROT**  
**RecoverMode Identifier: - = DEFROT**  
**Termode Identifier: - = 0XSYSDEFROT**  
**Type of Units: - = Integer**  
**Default Value: - = 0**



<b>Minimum Value:</b> -	=	<b>0</b>
<b>Maximum Value:</b> -	=	<b>2</b>
<b>Request Command:</b> -	=	<b>Esc0ZXSYSDEFROT</b>
<b>Received String:</b> -	=	<b>Esc0XSYSDEFROT 0</b>
<b>Send Command:</b> -	=	<b>Esc0XSYSDEFROT 0</b>

**DEFS = Default Print Speed**

**Description: - Intermittent Printers Only.**

Default print speed

<b>System Variable Name:</b> -	=	<b>SYSDEFS</b>
<b>RecoverMode Identifier:</b> -	=	<b>DEFS</b>
<b>Termode Identifier:</b> -	=	<b>0XSYSDEFS</b>
<b>Type of Units:</b> -	=	<b>Millimetres per second</b>
<b>Default Value:</b> -	=	<b>100</b>
<b>Minimum Value:</b> -	=	<b>50</b>
<b>Maximum Value:</b> -	=	<b>400</b>
<b>Request Command:</b> -	=	<b>Esc0ZXSYSDEFS</b>
<b>Received String:</b> -	=	<b>Esc0XSYSDEFS 100</b>
<b>Send Command:</b> -	=	<b>Esc0XSYSDEFS 100</b>

**DIREC = Default Single Print Direction.**

**Description: - Intermittent Printers Only**

Default print direction. 1 = single direction Printing. 2 = Bi- direction printing.

Bi- direction is not used with this type of Printhead used in the Thermocode 2.

<b>System Variable Name:</b> -	=	<b>SYSDIREC</b>
<b>RecoverMode Identifier:</b> -	=	<b>DIREC</b>
<b>Termode Identifier:</b> -	=	<b>0XSYSDIREC</b>
<b>Type of Units:</b> -	=	<b>Integer</b>
<b>Default Value:</b> -	=	<b>1</b>
<b>Minimum Value:</b> -	=	<b>1</b>
<b>Maximum Value:</b> -	=	<b>2</b>
<b>Request Command:</b> -	=	<b>Esc0ZXSYSDIREC</b>
<b>Received String:</b> -	=	<b>Esc0XSYSDIREC 1</b>
<b>Send Command:</b> -	=	<b>Esc0XSYSDIREC 1</b>

**DPEEL = Peel Height**

**Description: - Intermittent Printers**

Not to be confused with “DEFL” Default Peel Height;

Lifts the Printhead (in millimetres) above the ribbon, before indexing the foil. This stops the Printhead influencing the foil tracking and alignment. At the same time the Printhead goes back to the home position and does not return to the Printhead height until the index is complete. Maximum value is 20mm less the Printhead height. To activate this variable you have to set “PEELC” to 1  
Note! Using this variable could cause speed problems.

<b>System Variable Name:</b> -	=	<b>SYSDPEEL</b>
<b>RecoverMode Identifier:</b> -	=	<b>DPEEL</b>
<b>Termode Identifier:</b> -	=	<b>0XSYSDPEEL</b>
<b>Type of Units:</b> -	=	<b>Millimetres</b>
<b>Default Value:</b> -	=	<b>0</b>
<b>Minimum Value:</b> -	=	<b>0</b>
<b>Maximum Value:</b> -	=	<b>20 (Less the Printhead Height)</b>
<b>Request Command:</b> -	=	<b>Esc0ZXSYSDPEEL</b>
<b>Received String:</b> -	=	<b>Esc0XSYSDPEEL 0</b>
<b>Send Command:</b> -	=	<b>Esc0XSYSDPEEL 0</b>

**DSAVE = Day Light Saving****Description: - All Printers**

Set the dates of the summer & winter times to correct the automatic printing of dates etc. The String is made up of the first date in this example 0330 = March 30<sup>th</sup> (MMDD) and 1030 = October 30<sup>th</sup> (MMDD). The 1 = Backward 1 hour. 0 = Forward 1 Hour

<b>System Variable Name: -</b>	<b>=</b>	<b>SYSDSAVE</b>
<b>RecoverMode Identifier: -</b>	<b>=</b>	<b>DSAVE</b>
<b>Termode Identifier: -</b>	<b>=</b>	<b>0XSYSDSAVE</b>
<b>Type of Units: -</b>	<b>=</b>	<b>String MMDD, MMDD, 1</b>
<b>Default Value: -</b>	<b>=</b>	<b>None</b>
<b>Minimum Value: -</b>	<b>=</b>	<b>n/a</b>
<b>Maximum Value: -</b>	<b>=</b>	<b>n/a</b>
<b>Request Command: -</b>	<b>=</b>	<b>Esc0ZXSYSDSAVE</b>
<b>Received String: -</b>	<b>=</b>	<b>Esc0XSYSDSAVE</b>
<b>Send Command: -</b>	<b>=</b>	<b>Esc0XSYSDSAVE 0330,1030,1</b> (For the above example)

**ENCADJ = Encoder Adjustment****Description: - Continuous Printers Only**

Adjusts the size of the encoder roller.

Used with continuous trigger, ie SYSCOMTRIG running continuously and SYSCORNUM > 99.

<b>System Variable Name: -</b>	<b>=</b>	<b>SYSENCADJ</b>
<b>RecoverMode Identifier: -</b>	<b>=</b>	<b>ENCADJ</b>
<b>Termode Identifier: -</b>	<b>=</b>	<b>0XSYSENCADJ</b>
<b>Type of Units: -</b>	<b>=</b>	<b>Percentage</b>
<b>Default Value: -</b>	<b>=</b>	<b>0</b>
<b>Minimum Value: -</b>	<b>=</b>	<b>-10.00</b>
<b>Maximum Value: -</b>	<b>=</b>	<b>10.00</b>
<b>Request Command: -</b>	<b>=</b>	<b>Esc0ZXSYSENCADJ</b>
<b>Received String: -</b>	<b>=</b>	<b>Esc0XSYSENCADJ 1.0</b>
<b>Send Command: -</b>	<b>=</b>	<b>Esc0XSYSENCADJ 1.0</b>

**ENDEXT = Adds dots to the end of the printed image****Description: - All Printers**

Adds dots to the end of the printed image. Range 0 to 120 dots. Intermittent Printer default value = 4  
Continuous Printer default value = 0

When used with a continuous printer, the ribbon is automatically adjusted to minimum.

<b>System Variable Name: -</b>	<b>=</b>	<b>SYSENDEXT</b>
<b>RecoverMode Identifier: -</b>	<b>=</b>	<b>ENDEXT</b>
<b>Termode Identifier: -</b>	<b>=</b>	<b>0XSYSENDEXT</b>
<b>Type of Units: -</b>	<b>=</b>	<b>DOTS</b>
<b>Default Value: -</b>	<b>=</b>	<b>4 = Intermittent Printer, 0 = Continuous printer</b>
<b>Minimum Value: -</b>	<b>=</b>	<b>0</b>
<b>Maximum Value: -</b>	<b>=</b>	<b>120</b>
<b>Request Command: -</b>	<b>=</b>	<b>Esc0ZXSYSENDEXT</b>
<b>Received String: -</b>	<b>=</b>	<b>Esc0XSYSENDEXT 4</b>
<b>Send Command: -</b>	<b>=</b>	<b>Esc0XSYSENDEXT 4</b>

**ERRDEV = Controls how the error messages are displayed on the keypad****Description: - All Printers**

Controls how the error messages are displayed on the keypad.

0 = All Text Strings and Error numbers.

1 = Just Text strings.

2 = Just Error numbers.

<b>System Variable Name: -</b>	<b>=</b>	<b>SYSERRDEV</b>
--------------------------------	----------	------------------

<b>RecoverMode Identifier: -</b>	<b>=</b>	<b>ERRDEV</b>
<b>Termode Identifier: -</b>	<b>=</b>	<b>0XSYSERRDEV</b>
<b>Type of Units: -</b>	<b>=</b>	<b>Integer</b>
<b>Default Value: -</b>	<b>=</b>	<b>0</b>
<b>Minimum Value: -</b>	<b>=</b>	<b>0</b>
<b>Maximum Value: -</b>	<b>=</b>	<b>2</b>
<b>Request Command: -</b>	<b>=</b>	<b>Esc0ZXSYSERRDEV</b>
<b>Received String: -</b>	<b>=</b>	<b>Esc0XSYSERRDEV 0</b>
<b>Send Command: -</b>	<b>=</b>	<b>Esc0XSYSERRDEV 0</b>

**FASTFONT = Enables Caching of 3 Fonts**

**Description: - All Printers**

This variable work best when using small size True Type Fonts, or any size SFP.

Instead of regenerating the font size for each image this is held in memory. Speeding up the print cycle time. Up to 3 font initialisations are cached. This feature can cause fm\_ allocate problems with large fonts.

<b>System Variable Name: -</b>	<b>=</b>	<b>SYSFASTFONT</b>
<b>RecoverMode Identifier: -</b>	<b>=</b>	<b>FASTFONT</b>
<b>Termode Identifier: -</b>	<b>=</b>	<b>0XSYSFASTFONT</b>
<b>Type of Units: -</b>	<b>=</b>	<b>Integer</b>
<b>Default Value: -</b>	<b>=</b>	<b>0</b>
<b>Minimum Value: -</b>	<b>=</b>	<b>0</b>
<b>Maximum Value: -</b>	<b>=</b>	<b>1</b>
<b>Request Command: -</b>	<b>=</b>	<b>Esc0ZXSYSFASTFONT</b>
<b>Received String: -</b>	<b>=</b>	<b>Esc0XSYSFASTFONT 0</b>
<b>Send Command: -</b>	<b>=</b>	<b>Esc0XSYSFASTFONT 0</b>

**FORCET = Forces a printer to the same or different model**

**Description: - All Printers**

Used to force a printer to a different model i.e. 107M can be forced to a 107S. Accepts upper or lower case letter.

The printer area would be the size of a 107S. The printer on boot up does not measure the carriage distance between the A and B sensors. Activated after re-boot of the Printer.

This can also be used to force a 107S to a 107S again the Printer on boot up does not measure between Sensors. Also see "**ALEN**" and "**ACARRIAGE**"

<b>System Variable Name: -</b>	<b>=</b>	<b>SYSFORCET</b>
<b>RecoverMode Identifier: -</b>	<b>=</b>	<b>FORCET</b>
<b>Termode Identifier: -</b>	<b>=</b>	<b>0XSYSFORCET</b>
<b>Type of Units: -</b>	<b>=</b>	<b>String</b>
<b>Default Value: -</b>	<b>=</b>	<b>Blank</b>
<b>Minimum Value: -</b>	<b>=</b>	<b>107s (Any Printer Model)</b>
<b>Maximum Value: -</b>	<b>=</b>	<b>107S</b>
<b>Request Command: -</b>	<b>=</b>	<b>Esc0ZXSYSFORCET</b>
<b>Received String: -</b>	<b>=</b>	<b>Esc0XSYSFORCET</b>
<b>Send Command: -</b>	<b>=</b>	<b>Esc0XSYSFORCET</b>

**FORMATDONE = Used with Windows Driver**

**Description: - All Printers**

Used with the Open Date Windows driver when spooling a database

<b>System Variable Name: -</b>	<b>=</b>	<b>SYSFORMATDONE</b>
<b>RecoverMode Identifier: -</b>	<b>=</b>	<b>FORMATDONE</b>
<b>Termode Identifier: -</b>	<b>=</b>	<b>0XSYSFASTFONT</b>
<b>Type of Units: -</b>	<b>=</b>	<b>Integer</b>
<b>Default Value: -</b>	<b>=</b>	<b>0</b>
<b>Minimum Value: -</b>	<b>=</b>	<b>0</b>
<b>Maximum Value: -</b>	<b>=</b>	<b>1</b>

Continued on next Page

Request Command: - = Esc0ZXSYSFORMATDONE  
 Received String: - = Esc0XSYSFORMATDONE 0  
 Send Command: - = Esc0XSYSFASTFONT 0

**HDATE = Printhead date**

**Description: - All Printers**

Returns the date the Printhead was first used to print a label.

**NOTE!** The value can only be received.

System Variable Name: - = SYSHDATE  
 RecoverMode Identifier: - = HDATE  
 Termode Identifier: - = 0XSYSHDATE  
 Type of Units: - = STRING  
 Received Value: - = Date  
 Minimum Value: - = n/a  
 Maximum Value: - = n/a  
 Request Command: - = Esc0ZXSYSHDATE  
 Received String: - = Esc0XSYSHDATE 12/10/2004  
 Send Command: - = n/a

**HDIST = Printhead Distance in Metres**

**Description: - All Printers**

Printhead distance in metres, the actual distance the printhead has travelled.

**NOTE!** The value can only be received.

System Variable Name: - = SYSHDIST  
 RecoverMode Identifier: - = HDIST  
 Termode Identifier: - = 0XSYSHDIST  
 Type of Units: - = STRING  
 Received Value: - = Metres  
 Minimum Value: - = n/a  
 Maximum Value: - = n/a  
 Request Command: - = Esc0ZXSYSHDIST  
 Received String: - = Esc0XSYSHDIST 1342  
 Send Command: - = n/a

**HEIGHT = The Printhead Height Above the Substrate**

**Description: - All Printers**

Printhead height above the substrate in millimetres. Default Value dependent on the type of Printer.

System Variable Name: - = SYSHEIGHT  
 RecoverMode Identifier: - = HEIGHT  
 Termode Identifier: - = 0XSYSHEIGHT  
 Type of Units: - = Millimetres  
 Default Value: - = 2 (Intermittent Printers 107)  
 Minimum Value: - = 0.5  
 Maximum Value: - = 9.9  
 Request Command: - = Esc0ZXSYSHEIGHT  
 Received String: - = Esc0XSYSHEIGHT 2  
 Send Command: - = Esc0XSYSHEIGHT 2

**HID = Printhead Identification Number**

**Description: - All Printers**

Printhead Serial number

**NOTE!** The value can only be received.

System Variable Name: - = SYSHDIST

<b>RecoverMode Identifier: -</b>	<b>=</b>	<b>HDIST</b>
<b>Termode Identifier: -</b>	<b>=</b>	<b>0XSYSHDIST</b>
<b>Type of Units: -</b>	<b>=</b>	<b>STRING</b>
<b>Received Value: -</b>	<b>=</b>	<b>Metres</b>
<b>Minimum Value: -</b>	<b>=</b>	<b>n/a</b>
<b>Maximum Value: -</b>	<b>=</b>	<b>n/a</b>
<b>Request Command: -</b>	<b>=</b>	<b>Esc0ZXSYSHDIST</b>
<b>Received String: -</b>	<b>=</b>	<b>Esc0XSYSHDIST 1342</b>
<b>Send Command: -</b>	<b>=</b>	<b>n/a</b>

**HOME = Printer Home position**

**Description: - Intermittent Printers Only**

Intermittent Printers Only. Printer Home position, 1 = A, 2 = B. (Always 1)

<b>System Variable Name: -</b>	<b>=</b>	<b>SYSHOME</b>
<b>RecoverMode Identifier: -</b>	<b>=</b>	<b>HOME</b>
<b>Termode Identifier: -</b>	<b>=</b>	<b>0XSYSHOME</b>
<b>Type of Units: -</b>	<b>=</b>	<b>Integer</b>
<b>Default Value: -</b>	<b>=</b>	<b>1</b>
<b>Minimum Value: -</b>	<b>=</b>	<b>1</b>
<b>Maximum Value: -</b>	<b>=</b>	<b>2</b>
<b>Request Command: -</b>	<b>=</b>	<b>Esc0ZXSYSHOME</b>
<b>Received String: -</b>	<b>=</b>	<b>Esc0XSYSHOME</b>
<b>Send Command: -</b>	<b>=</b>	<b>Esc0XSYSHOME</b>

**HS = High Speed Mode "Intermittent Printers"**

**Description: - Intermittent Printers Only**

High Speed Printing. Automatically sets up a printer as High Speed Version, several different variables are updated automatically. Once you set this mode to 1, the printer must be re-started. "Normally only used on Thermocode 53 printers"

<b>System Variable Name: -</b>	<b>=</b>	<b>SYSHS</b>
<b>RecoverMode Identifier: -</b>	<b>=</b>	<b>HS</b>
<b>Termode Identifier: -</b>	<b>=</b>	<b>0XSYSHS</b>
<b>Type of Units: -</b>	<b>=</b>	<b>Integer</b>
<b>Default Value: -</b>	<b>=</b>	<b>0</b>
<b>Minimum Value: -</b>	<b>=</b>	<b>1</b>
<b>Maximum Value: -</b>	<b>=</b>	<b>1</b>
<b>Request Command: -</b>	<b>=</b>	<b>Esc0ZXSYSHS</b>
<b>Received String: -</b>	<b>=</b>	<b>Esc0XSYSHS</b>
<b>Send Command: -</b>	<b>=</b>	<b>Esc0XSYSHS</b>

**ILEN = Image Length of Printers**

**Description: - Continuous Printers (Intermittent printer new Boards only)**

Multi-image Printers Only. This command allows you to set the maximum image length for Multi-image printers, set the image length you require in millimetres.

<b>System Variable Name: -</b>	<b>=</b>	<b>SYSILEN</b>
<b>RecoverMode Identifier: -</b>	<b>=</b>	<b>ILEN</b>
<b>Termode Identifier: -</b>	<b>=</b>	<b>0XSYSILEN</b>
<b>Type of Units: -</b>	<b>=</b>	<b>Millimetres</b>
<b>Default Value: -</b>	<b>=</b>	<b>0</b>
<b>Minimum Value: -</b>	<b>=</b>	<b>0</b>
<b>Maximum Value: -</b>	<b>=</b>	<b>Dependent on the printer type.</b>
<b>Request Command: -</b>	<b>=</b>	<b>Esc0ZXSYSILEN</b>
<b>Received String: -</b>	<b>=</b>	<b>Esc0XSYSILEN</b>
<b>Send Command: -</b>	<b>=</b>	<b>Esc0XSYSILEN</b>

**INUM = Number of Images****Description: - Continuous Printers Only**

Multi-image Printers Only. This printer command tells you via Recovermode or Termode, how many different images you can have in the printer. The shorter the image the more images are available. Example if a 107 machine has 4 images, then a 53 machine would have 8 images. The amount of images will be dependant how "ILEN" is set. Also see **COMTRIG**

**NOTE!** The value can only be received

<b>System Variable Name: -</b>	=	<b>SYSINUM</b>
<b>RecoverMode Identifier: -</b>	=	<b>INUM</b>
<b>Termode Identifier: -</b>	=	<b>0XSYSINUM</b>
<b>Type of Units: -</b>	=	<b>Value</b>
<b>Default Value: -</b>	=	<b>n/a</b>
<b>Minimum Value: -</b>	=	<b>n/a</b>
<b>Maximum Value: -</b>	=	<b>n/a</b>
<b>Request Command: -</b>	=	<b>Esc0ZXSYSINUM</b>
<b>Received String: -</b>	=	<b>Esc0XSYSINUM</b>
<b>Send Command: -</b>	=	<b>n/a</b>

**IOFFSET = Image offset alignment (not used)****Description: - All printers**

Image offset, used to Align the images on two direction printing.

Valid Range -1.00 - +1.00 "Not required as our printer are not bi directional"

<b>System Variable Name: -</b>	=	<b>SYSIOFFSET</b>
<b>RecoverMode Identifier: -</b>	=	<b>IOFFSET</b>
<b>Termode Identifier: -</b>	=	<b>0XSYSIOFFSET</b>
<b>Type of Units: -</b>	=	<b>Value</b>
<b>Default Value: -</b>	=	<b>n/a</b>
<b>Minimum Value: -</b>	=	<b>n/a</b>
<b>Maximum Value: -</b>	=	<b>n/a</b>
<b>Request Command: -</b>	=	<b>Esc0ZXSYSIOFFSET</b>
<b>Received String: -</b>	=	<b>Esc0XSYSIOFFSET</b>
<b>Send Command: -</b>	=	<b>Esc0XSYSIOFFSET</b>

**IPADDR = IP Address (new boards only)****Description: - All Printers**

TCP/IP, Transmission Control Protocol / Internet Protocols

Network Address of the Printer, when connected to the Ethernet.

See your Network Administrator for a spare address. Example "192.168.2.101"

(Once set, you must re-start the printer)

<b>System Variable Name: -</b>	=	<b>SYSIPADDR</b>
<b>RecoverMode Identifier: -</b>	=	<b>IPADDR</b>
<b>Termode Identifier: -</b>	=	<b>0XSYSIPADDR</b>
<b>Type of Units: -</b>	=	<b>String</b>
<b>Default Value: -</b>	=	<b>n/a</b>
<b>Minimum Value: -</b>	=	<b>n/a</b>
<b>Maximum Value: -</b>	=	<b>n/a</b>
<b>Request Command: -</b>	=	<b>Esc0ZXSYSIPADDR 192.168.2.101</b>
<b>Received String: -</b>	=	<b>Esc0XSYSIPADDR</b>
<b>Send Command: -</b>	=	<b>Esc0XSYSIPADDR 192.168.2.101</b>

**IPGW = Default Gate Way Address (new boards only)****Description: - All Printers**

TCP/IP, Transmission Control Protocol / Internet Protocols

Default Gate Way Address of the Printer, when connected to the Ethernet.

Continued on next Page

See your Network Administrator for correct address. Example "192.168.2.1"  
(Once set, you must re-start the printer)

<b>System Variable Name:</b> -	=	<b>SYSIPGW</b>
<b>RecoverMode Identifier:</b> -	=	<b>IPGW</b>
<b>Termode Identifier:</b> -	=	<b>0XSYSIPGW</b>
<b>Type of Units:</b> -	=	<b>String</b>
<b>Default Value:</b> -	=	<b>n/a</b>
<b>Minimum Value:</b> -	=	<b>n/a</b>
<b>Maximum Value:</b> -	=	<b>n/a</b>
<b>Request Command:</b> -	=	<b>Esc0ZXSYSIPGW 192.168.2.1</b>
<b>Received String:</b> -	=	<b>Esc0XSYSIPGW</b>
<b>Send Command:</b> -	=	<b>Esc0XSYSIPGW 192.168.2.1</b>

**IPMAC = Mac Address (new boards only)**

**Description: - All Printers**

TCP/IP, Transmission Control Protocol / Internet Protocols

This identifier is dedicated to the Card installed on the Processor Board Each Card has its own unique identifier and cannot be changed. If this returns 000000000000 (Zeros) check the connector. (The address are automatically assigned by the manufacturer)

**NOTE!** The value can only be received

<b>System Variable Name:</b> -	=	<b>SYSIPADDR</b>
<b>RecoverMode Identifier:</b> -	=	<b>IPADDR</b>
<b>Termode Identifier:</b> -	=	<b>0XSYSIPADDR</b>
<b>Type of Units:</b> -	=	<b>String</b>
<b>Default Value:</b> -	=	<b>n/a</b>
<b>Minimum Value:</b> -	=	<b>000000000000</b>
<b>Maximum Value:</b> -	=	<b>n/a</b>
<b>Request Command:</b> -	=	<b>Esc0ZXSYSIPMAC XXXXXXXXXXXXX</b>
<b>Received String:</b> -	=	<b>Esc0XSYSIPMAC</b>
<b>Send Command:</b> -	=	<b>n/a</b>

**IPMASK = Subnet Mask (new boards only)**

**Description: - All Printers**

TCP/IP, Transmission Control Protocol / Internet Protocols

Network Mask when connected to the Ethernet. See your Network Administrator for the correct mask requirements. Example "255.255.255.0"  
(Once set, you must re-start the printer)

<b>System Variable Name:</b> -	=	<b>SYSIPMASK</b>
<b>RecoverMode Identifier:</b> -	=	<b>IPMASK</b>
<b>Termode Identifier:</b> -	=	<b>0XSYSIPMASK</b>
<b>Type of Units:</b> -	=	<b>String</b>
<b>Default Value:</b> -	=	<b>255.255.255.0</b>
<b>Minimum Value:</b> -	=	(Maximum value is most commonly used as shown)
<b>Maximum Value:</b> -	=	<b>255.255.255.0</b>
<b>Request Command:</b> -	=	<b>Esc0ZXSYSIPMASK 255.255.255.0</b>
<b>Received String:</b> -	=	<b>Esc0XSYSIPMASK</b>
<b>Send Command:</b> -	=	<b>Esc0XSYSIPMASK 225.225.225.0</b>

**IPTTEST = Internal use only "Open Date" (new boards only)**

**Description: - All Printers**

Internal use only (Open Date) variable used to check the TCP\_IP Card

When tested returns 1 = OK and defaults 0 after testing

**NOTE!** The value can only be received

<b>System Variable Name: -</b>	<b>=</b>	<b>SYSIPTEST</b>
<b>RecoverMode Identifier: -</b>	<b>=</b>	<b>IPTEST</b>
<b>Termode Identifier: -</b>	<b>=</b>	<b>0XSYSIPTEST</b>
<b>Type of Units: -</b>	<b>=</b>	<b>String</b>
<b>Default Value: -</b>	<b>=</b>	<b>0</b>
<b>Minimum Value: -</b>	<b>=</b>	<b>0</b>
<b>Maximum Value: -</b>	<b>=</b>	<b>0</b>
<b>Request Command: -</b>	<b>=</b>	<b>Esc0ZXSYSIPTEST 0</b>
<b>Received String: -</b>	<b>=</b>	<b>Esc0XSYSIPADDR 0</b>
<b>Send Command: -</b>	<b>=</b>	<b>n/a</b>

**ISIPTOUT = TCIP Boards Time Out (new boards only)**

**Description: - All Printers**

This controls how long the TCIP boards are active, in seconds.

<b>System Variable Name: -</b>	<b>=</b>	<b>SYSIPTOUT</b>
<b>RecoverMode Identifier: -</b>	<b>=</b>	<b>IPTOUT</b>
<b>Termode Identifier: -</b>	<b>=</b>	<b>0XSYSIPTOUT</b>
<b>Type of Units: -</b>	<b>=</b>	<b>Minutes</b>
<b>Default Value: -</b>	<b>=</b>	<b>2</b>
<b>Minimum Value: -</b>	<b>=</b>	<b>0</b>
<b>Maximum Value: -</b>	<b>=</b>	<b>10</b>
<b>Request Command: -</b>	<b>=</b>	<b>Esc0ZXSYSIPTOUT 2</b>
<b>Received String: -</b>	<b>=</b>	<b>Esc0XSYSIPTOUT 2</b>

**ISEL = Multi printing (new boards only)**

**Description: - Intermittent Printers Only.**

Multi-image Printing Only. This a special command that specifies the sequence and order of prints required, and image memory to be used for a Multi-image printing.

See document Multi Image Printing

<b>System Variable Name: -</b>	<b>=</b>	<b>SYSISEL</b>
<b>RecoverMode Identifier: -</b>	<b>=</b>	<b>ISEL</b>
<b>Termode Identifier: -</b>	<b>=</b>	<b>0XSYSISEL</b>
<b>Type of Units: -</b>	<b>=</b>	
<b>Default Value: -</b>	<b>=</b>	
<b>Minimum Value: -</b>	<b>=</b>	
<b>Maximum Value: -</b>	<b>=</b>	
<b>Request Command: -</b>	<b>=</b>	<b>Esc0ZXSYSISEL</b>
<b>Received String: -</b>	<b>=</b>	<b>Esc0XSYSISEL 10,12,13</b>
<b>Send Command: -</b>	<b>=</b>	<b>Esc0XSYSISEL 10,12,13</b>

**ISIP = IP Card present (new boards only)**

**Description: - All Printers**

The ether net part of the Card has been recognised by the Processor Boards.

If this returns 0 (Zero) check the connector. Ensure the card is installed.

**NOTE!** The value can only be received

<b>System Variable Name: -</b>	<b>=</b>	<b>SYSISIP</b>
<b>RecoverMode Identifier: -</b>	<b>=</b>	<b>ISIP</b>
<b>Termode Identifier: -</b>	<b>=</b>	<b>0XSYSISIP</b>
<b>Type of Units: -</b>	<b>=</b>	<b>String</b>
<b>Default Value: -</b>	<b>=</b>	<b>1</b>
<b>Minimum Value: -</b>	<b>=</b>	<b>0</b>
<b>Maximum Value: -</b>	<b>=</b>	<b>1</b>
<b>Request Command: -</b>	<b>=</b>	<b>Esc0ZXSYSISIP 1</b>
<b>Received String: -</b>	<b>=</b>	<b>Esc0XSYSISIP 1</b>
<b>Send Command: -</b>	<b>=</b>	<b>n/a</b>
<b>Send Command: -</b>	<b>=</b>	<b>Esc0XSYSIPTOUT 2</b>

Continued on next Page



**ISUSBIN = USB Card present** (new boards only)

**Description: - All Printers**

The USB part of the Card has been recognised by the Processor Boards.

If this returns 0 (Zero) check the connector

**NOTE!** The value can only be received

<b>System Variable Name: -</b>	<b>=</b>	<b>SYSISUSBIN</b>
<b>RecoverMode Identifier: -</b>	<b>=</b>	<b>ISUSBIN</b>
<b>Termode Identifier: -</b>	<b>=</b>	<b>0XSYSISUSBIN</b>
<b>Type of Units: -</b>	<b>=</b>	<b>String</b>
<b>Default Value: -</b>	<b>=</b>	<b>1</b>
<b>Minimum Value: -</b>	<b>=</b>	<b>0</b>
<b>Maximum Value: -</b>	<b>=</b>	<b>1</b>
<b>Request Command: -</b>	<b>=</b>	<b>Esc0ZXSYSISUSBIN</b>
<b>Received String: -</b>	<b>=</b>	<b>Esc0XSYSISUSBIN</b>
<b>Send Command: -</b>	<b>=</b>	<b>n/a</b>

**LANG = Mini Terminal Language**

**Description: 0 All Printers**

All printers. Language Selection. 1 = English, 2 = German, 3 = French, 4 = Holland, 5 = Spanish, 6 = Italian. 7 = English (American Version)

<b>System Variable Name: -</b>	<b>=</b>	<b>SYSLANG</b>
<b>RecoverMode Identifier: -</b>	<b>=</b>	<b>LANG</b>
<b>Termode Identifier: -</b>	<b>=</b>	<b>0XSYSLANG</b>
<b>Type of Units: -</b>	<b>=</b>	<b>Integer</b>
<b>Default Value: -</b>	<b>=</b>	<b>1</b>
<b>Minimum Value: -</b>	<b>=</b>	<b>1</b>
<b>Maximum Value: -</b>	<b>=</b>	<b>7</b>
<b>Request Command: -</b>	<b>=</b>	<b>Esc0ZXSYSLANG</b>
<b>Received String: -</b>	<b>=</b>	<b>Esc0XSYSLANG 1</b>
<b>Send Command: -</b>	<b>=</b>	<b>Esc0XSYSLANG 1</b>

**LOOPUSB = Communication test for the USB connection** (new boards only)

**Description: - All Printers**

This is to check for interference on a USB to serial communication port.

One of our Customers reported a problem with the USB port.

It was found that a UPS (Uninterruptible Power Supply) was interrogating every USB port on the network, which interfered with the down loading of Formats to our printers.

To use this Variable: -

Start hyper terminal on the serial port and a second hyper terminal on the USB port.

Then type AAAAAAA on the USB port

On the serial port you should see returned as Hex code: - 41,41,41,41,41

Or not if there is a problem.

<b>System Variable Name: -</b>	<b>=</b>	<b>SYSLOOPUSB</b>
<b>RecoverMode Identifier: -</b>	<b>=</b>	<b>LOOPUSB</b>
<b>Termode Identifier: -</b>	<b>=</b>	<b>0XSYSLOOPUSB</b>
<b>Type of Units: -</b>	<b>=</b>	<b>Integer</b>
<b>Default Value: -</b>	<b>=</b>	<b>0</b>
<b>Minimum Value: -</b>	<b>=</b>	<b>0</b>
<b>Maximum Value: -</b>	<b>=</b>	<b>1</b>
<b>Request Command: -</b>	<b>=</b>	<b>Esc0ZXSYSLOOPUSB</b>
<b>Received String: -</b>	<b>=</b>	<b>Esc0XSYSLOOPUSB 1</b>
<b>Send Command: -</b>	<b>=</b>	<b>Esc0XSYSLOOPUSB 1</b>

**LSTEPS = Development Only****Description: - All Printers**

All printers. Development Only. Writes the vertical motor step amount from the park position to the pressure position.

**NOTE!** The value can only be received

<b>System Variable Name: -</b>	<b>=</b>	<b>SYSLSTEPS</b>
<b>RecoverMode Identifier: -</b>	<b>=</b>	<b>LSTEPS</b>
<b>Termode Identifier: -</b>	<b>=</b>	<b>0XSYSLSTEPS</b>
<b>Type of Units: -</b>	<b>=</b>	<b>Steps</b>
<b>Default Value: -</b>	<b>=</b>	<b>n/a</b>
<b>Minimum Value: -</b>	<b>=</b>	<b>n/a</b>
<b>Maximum Value: -</b>	<b>=</b>	<b>n/a</b>
<b>Request Command: -</b>	<b>=</b>	<b>Esc0ZXSYSLSTEPS</b>
<b>Received String: -</b>	<b>=</b>	<b>Esc0XSYSLANG 248</b>
<b>Send Command: -</b>	<b>=</b>	<b>n/a</b>

**MCPSLOW = Minimum Speed Too Slow****Description: - Continuous Printers Only**

Requested by Open Date Germany, to stop the Parent machine if the value set in **MCSPEED** is reached or less than, and **MCPSLOW** is 1 and error message %Machine speed too slow+and the fault relay is de-activated.

<b>System Variable Name: -</b>	<b>=</b>	<b>SYSMCSLOW</b>
<b>RecoverMode Identifier: -</b>	<b>=</b>	<b>MCSLOW</b>
<b>Termode Identifier: -</b>	<b>=</b>	<b>0XSYSMCSLOW</b>
<b>Type of Units: -</b>	<b>=</b>	<b>Integer</b>
<b>Default Value: -</b>	<b>=</b>	<b>0</b>
<b>Minimum Value: -</b>	<b>=</b>	<b>0</b>
<b>Maximum Value: -</b>	<b>=</b>	<b>1</b>
<b>Request Command: -</b>	<b>=</b>	<b>Esc0ZXSYSMCSLOW</b>
<b>Received String: -</b>	<b>=</b>	<b>Esc0XSYSMCSLOW 0</b>
<b>Send Command: -</b>	<b>=</b>	<b>Esc0XSYSMCSLOW 1</b>

**MCSPEED = Minimum Speed****Description: - Continuous Printers Only**

This allows you to change the speed that the printer starts and stops printing.  
If set to 50 the printer will start printing at 50 mm/second & stop printing below 50 mm/sec.

<b>System Variable Name: -</b>	<b>=</b>	<b>SYSMCSPEED</b>
<b>RecoverMode Identifier: -</b>	<b>=</b>	<b>MCSPEED</b>
<b>Termode Identifier: -</b>	<b>=</b>	<b>0XSYSMCSPEED</b>
<b>Type of Units: -</b>	<b>=</b>	<b>Millimetres per second</b>
<b>Default Value: -</b>	<b>=</b>	<b>50</b>
<b>Minimum Value: -</b>	<b>=</b>	<b>0</b>
<b>Maximum Value: -</b>	<b>=</b>	<b>300</b>
<b>Request Command: -</b>	<b>=</b>	<b>Esc0ZXSYSMCSPEED</b>
<b>Received String: -</b>	<b>=</b>	<b>Esc0XSYSMCSPEED 50</b>
<b>Send Command: -</b>	<b>=</b>	<b>Esc0XSYSMCSPEED 50</b>

**MINCUPD = Variable field up dates in conjunction with MCSPEED****Description: - Continuous Printers Only**

Continuous Only. Update Setting for missed prints, due to the printer going below the minimum speed. (Set as 1 = updates memory always.) Set as 0 = no update for missed prints due to minimum speed reached. "Check value of MCSPEED Variable  
This parameter is for up dating fields.

Continued on next Page

- 0 = No Update      If the last count value was 6 on the next actual print, when the machine is up to speed the count would be 7
- 1 = Update Normally      With every Print Signal the counter is incremented by + 1.  
If there were 15 Print signals before the machine is up to speed the count Would be 16 on the next print job.

**System Variable Name: -**      =      **SYSMINCUPD**  
**RecoverMode Identifier: -**      =      **MINCUPD**  
**Termode Identifier: -**      =      **0XSYS MINCUPD**  
**Type of Units: -**      =      **Integer**  
**Default Value: -**      =      **1**  
**Minimum Value: -**      =      **0**

**Maximum Value: -**      =      **1**  
**Request Command: -**      =      **Esc0ZXSYSMINCUPD**  
**Received String: -**      =      **Esc0XSYSMINCUPD 1**  
**Send Command: -**      =      **Esc0XSYSMINCUPD 1**

**MIRROR**      =      **Mirror the Printer Image**

**Description: - All Printers**

Mirrors the printed image, once set all images are mirrored.

**System Variable Name: -**      =      **SYSMIRROR**  
**RecoverMode Identifier: -**      =      **MIRROR**  
**Termode Identifier: -**      =      **0XSYSMIRROR**  
**Type of Units: -**      =      **Integer**  
**Default Value: -**      =      **0**  
**Minimum Value: -**      =      **0**  
**Maximum Value: -**      =      **1**  
**Request Command: -**      =      **Esc0ZXSYSMIRROR**  
**Received String: -**      =      **Esc0XSYSMIRROR 0**  
**Send Command: -**      =      **Esc0XSYSMIRROR 0**

**MON1**      =      **Month of the Year, as 1 Single Character**

**Description: - All Printers**

The Month of the year "A" This can be customized to suit the customer. January = A. The default settings are A to L. And can be changed using Recovermode with a Customized File or with Termode.

**System Variable Name: -**      =      **SYSMON1**  
**RecoverMode Identifier: -**      =      **MON1**  
**Termode Identifier: -**      =      **0XSYSMON1**  
**Type of Units: -**      =      **Alphanumeric String A,B,C,D,E,F,G,H,I,J,L 1,2,3 etc.**  
**Default Value: -**      =      **A,B,C,D,E,F,G,H,I,J,L**  
**Minimum Value: -**      =      **n/a**  
**Maximum Value: -**      =      **n/a**  
**Request Command: -**      =      **Esc0ZXSYSMON1**  
**Received String: -**      =      **Esc0XSYSMON1 A,B,C,D,E,F,G,H,I,J,L**  
**Send Command: -**      =      **Esc0XSYSMON1 A,B,C,D,E,F,G,H,I,J,L**

**MON3**      =      **Month of the Year 3 Alphabetical Characters**

**Description: - All Printers**

The month of the year "JAN"

The default settings are **JAN, FEB, MAR, APR, MAY, JUN, JUL, AUG, SEP, OCT, NOV, DEC**

This can be customized to suit the language required. And can be changed using Recovermode With a Customised File or with Termode.

**System Variable Name: -**      =      **SYSMON3**  
**RecoverMode Identifier: -**      =      **MON3**

<b>Termode Identifier: -</b>	<b>=</b>	<b>0XSYSMON3</b>
<b>Type of Units: -</b>	<b>=</b>	<b>String</b>
<b>Default Value: -</b>	<b>=</b>	<b>JAN, FEB, MAR, APR, MAY, JUN, JUL, AUG, SEP etc</b>
<b>Minimum Value: -</b>	<b>=</b>	<b>n/a</b>
<b>Maximum Value: -</b>	<b>=</b>	<b>n/a</b>
<b>Request Command: -</b>	<b>=</b>	<b>Esc0ZXSYSMON3</b>
<b>Received String: -</b>	<b>=</b>	<b>Esc0XSYSMON3 JAN, FEB, MAR, APR, MAY, JUN etc</b>
<b>Send Command: -</b>	<b>=</b>	<b>Esc0XSYSMON3 JAN, FEB, MAR, APR, MAY, JUN etc</b>

**MONTH = Month of the year "JANUARY"**

**Description: - All Printers**

The month of the year "JANUARY"

The default settings are **JANUARY, FEBRUARY, MARCH, APRIL, MAY, JUNE, JULY, AUGUST,**

**SEPTEMBER, OCTOBER, NOVEMBER, DECEMBER**

This can be customized to suit the language required. And can be changed using Recovermode With a Customised File or with Termode.

<b>System Variable Name: -</b>	<b>=</b>	<b>SYSMONTH</b>
<b>RecoverMode Identifier: -</b>	<b>=</b>	<b>MONTH</b>
<b>Termode Identifier: -</b>	<b>=</b>	<b>0XSYSMONTH</b>
<b>Type of Units: -</b>	<b>=</b>	<b>String</b>
<b>Default Value: -</b>	<b>=</b>	<b>JANUARY,FEBRUARY,MARCH,APRIL,MAY,JUNE etc</b>
<b>Minimum Value: -</b>	<b>=</b>	<b>n/a</b>
<b>Maximum Value: -</b>	<b>=</b>	<b>n/a</b>
<b>Request Command: -</b>	<b>=</b>	<b>Esc0ZXSYSMONTH JANUARY,FEBRUARY,MARCH etc</b>
<b>Received String: -</b>	<b>=</b>	<b>Esc0XSYSMONTH JANUARY,FEBRUARY,MARCH etc</b>
<b>Send Command: -</b>	<b>=</b>	<b>Esc0XSYSMONTH JANUARY,FEBRUARY,MARCH etc</b>

**NETNUM = Open date Printer Network Number**

**Description: - All Printers**

Open Date Printer Network Number (range 1 - 99) using RS485. Not Ethernet Connections

<b>System Variable Name: -</b>	<b>=</b>	<b>SYSNETNUM</b>
<b>RecoverMode Identifier: -</b>	<b>=</b>	<b>NETNUM</b>
<b>Termode Identifier: -</b>	<b>=</b>	<b>0XSYSNETNUM</b>
<b>Type of Units: -</b>	<b>=</b>	<b>String</b>
<b>Default Value: -</b>	<b>=</b>	<b>0</b>
<b>Minimum Value: -</b>	<b>=</b>	<b>0</b>
<b>Maximum Value: -</b>	<b>=</b>	<b>99</b>
<b>Request Command: -</b>	<b>=</b>	<b>Esc0ZXSYSNETNUM</b>
<b>Received String: -</b>	<b>=</b>	<b>Esc0XSYSNETNUM 0</b>
<b>Send Command: -</b>	<b>=</b>	<b>Esc0XSYSNETNUM 0</b>

**NOOVERFLOWMSG = Over or Under Flow faults**

**Description: - All Printers**

Set to 1 any **X** or **Y** over or under flows in the format is chopped to fit the page size, and the printer gives no error message.

<b>System Variable Name: -</b>	<b>=</b>	<b>SYSNOOVERFLOWMSG</b>
<b>RecoverMode Identifier: -</b>	<b>=</b>	<b>NOOVERFLOWMSG</b>
<b>Termode Identifier: -</b>	<b>=</b>	<b>0XSYSNOOVERFLOWMSG</b>
<b>Type of Units: -</b>	<b>=</b>	<b>Integer</b>
<b>Default Value: -</b>	<b>=</b>	<b>0</b>
<b>Minimum Value: -</b>	<b>=</b>	<b>0</b>
<b>Maximum Value: -</b>	<b>=</b>	<b>1</b>
<b>Request Command: -</b>	<b>=</b>	<b>Esc0ZXSYSNOOVERFLOWMSG 0</b>
<b>Received String: -</b>	<b>=</b>	<b>Esc0XSYS NOOVERFLOWMSG 0</b>
<b>Send Command: -</b>	<b>=</b>	<b>Esc0XSYSNOOVERFLOWMSG 0</b>

**NOTERM = Mini terminal Usage****Description All Printers: -**

Allows the Mini-Terminal (Keypad) to be disconnected from the printer permanently. All functions can then be set, by using dedicated software program using a computer. Also see "CASS"

<b>System Variable Name: -</b>	<b>=</b>	<b>SYSNOTERM</b>
<b>RecoverMode Identifier: -</b>	<b>=</b>	<b>NOTERM</b>
<b>Termode Identifier: -</b>	<b>=</b>	<b>0XSYSNOTERM</b>
<b>Type of Units: -</b>	<b>=</b>	<b>Integer</b>
<b>Default Value: -</b>	<b>=</b>	<b>0</b>
<b>Minimum Value: -</b>	<b>=</b>	<b>0</b>
<b>Maximum Value: -</b>	<b>=</b>	<b>1</b>
<b>Request Command: -</b>	<b>=</b>	<b>Esc0ZXSYSNOTERM</b>
<b>Received String: -</b>	<b>=</b>	<b>Esc0XSYSNOTERM 0</b>
<b>Send Command: -</b>	<b>=</b>	<b>Esc0XSYSNOTERM 0</b>

**PASS0 = Password 0 "Zero"****Description: - All Printers**

Only used for the special "CFRPT2 Variable". The default password is 0 (Zero) Pressing 1 on the keypad and entering the password %0+this will delete the format from the Print & Destination Memory. Allowing the user to send another format to the printer. The password would have to be changed using Recovermode, Termode or Codesoft.

<b>System Variable Name: -</b>	<b>=</b>	<b>SYSPASS0</b>
<b>RecoverMode Identifier: -</b>	<b>=</b>	<b>PASS0</b>
<b>Termode Identifier: -</b>	<b>=</b>	<b>0XSYPASS0</b>
<b>Type of Units: -</b>	<b>=</b>	<b>String</b>
<b>Default Value: -</b>	<b>=</b>	<b>0</b>
<b>Minimum Value: -</b>	<b>=</b>	<b>One numeric characters only</b>
<b>Maximum Value: -</b>	<b>=</b>	<b>Four numeric characters only</b>
<b>Request Command: -</b>	<b>=</b>	<b>Esc0ZXSYPASS0</b>
<b>Received String: -</b>	<b>=</b>	<b>Esc0XSYPASS0 0,0000</b>
<b>Send Command: -</b>	<b>=</b>	<b>Esc0XSYPASS0 0,0000</b>

**PASS1 = Password Level 1****Description: - All Printers**

Set the Level 1 Name and Password.

There are three parts to the password: - **1, OPERATOR, 1111**

**1** = the password is activated; change to "**0**" = No password required (deactivated).

**OPERATOR** = password name can be changed as required (maximum 12 characters)

**1111** = the password can be changed, to numerical characters. (1 . 4 numerical characters)

The Password can also be changed or activated / deactivated using the Mini Terminal. Main Menu 9 Pass codes

<b>System Variable Name: -</b>	<b>=</b>	<b>SYSPASS1</b>
<b>RecoverMode Identifier: -</b>	<b>=</b>	<b>PASS1</b>
<b>Termode Identifier: -</b>	<b>=</b>	<b>0XSYPASS1</b>
<b>Type of Units: -</b>	<b>=</b>	<b>String</b>
<b>Default Value: -</b>	<b>=</b>	<b>1111</b>
<b>Minimum Value: -</b>	<b>=</b>	<b>One numeric characters only</b>
<b>Maximum Value: -</b>	<b>=</b>	<b>Four numeric characters only</b>
<b>Request Command: -</b>	<b>=</b>	<b>Esc0ZXSYPASS0</b>
<b>Received String: -</b>	<b>=</b>	<b>Esc0XSYPASS1 1,OPERATOR,1111</b>
<b>Send Command: -</b>	<b>=</b>	<b>Esc0XSYPASS1 1,OPERATOR,1111</b>

**PASS2 = Password Level 2****Description: - All Printers**

Set the Level 2 Name and Password.

There are three parts to the password: - **1, CHARGHAND , 2222**

**1** = the password is activated; change to **"0"** = No password required (deactivated).

**CHARGHAND** = password name can be changed as required (maximum 12 characters)

**2222** = the password can be changed, to numerical characters. (1 . 4 numerical characters)

The Password can also be changed or activated / deactivated using the Mini Terminal.

Main Menu 9 Pass codes

<b>System Variable Name: -</b>	<b>=</b>	<b>SYSPASS2</b>
<b>RecoverMode Identifier: -</b>	<b>=</b>	<b>PASS2</b>
<b>Termode Identifier: -</b>	<b>=</b>	<b>0XSYSPASS2</b>
<b>Type of Units: -</b>	<b>=</b>	<b>String</b>
<b>Default Value: -</b>	<b>=</b>	<b>2222</b>
<b>Minimum Value: -</b>	<b>=</b>	<b>One numeric characters only</b>
<b>Maximum Value: -</b>	<b>=</b>	<b>Four numeric characters only</b>
<b>Request Command: -</b>	<b>=</b>	<b>Esc0ZXSYPASS2</b>
<b>Received String: -</b>	<b>=</b>	<b>Esc0XSYSPASS2 1,CHARGHAND,2222</b>
<b>Send Command: -</b>	<b>=</b>	<b>Esc0XSYSPASS2 1,CHARGHAND,2222</b>

**PASS3 = Password Level 3****Description: - All Printers**

Set the Level 1 Name and Password.

There are three parts to the password:- **1, ENGINEER, 3333**

**1** = the password is activated; change to **"0"** = No password required (deactivated).

**ENGINEER** = password name can be changed as required (maximum 12 characters)

**3333** = the password can be changed, to numerical characters. (1 . 4 numerical characters)

The Password can also be changed or activated / deactivated using the Mini Terminal.

Main Menu 9 Pass codes

<b>System Variable Name: -</b>	<b>=</b>	<b>SYSPASS3</b>
<b>RecoverMode Identifier: -</b>	<b>=</b>	<b>PASS3</b>
<b>Termode Identifier: -</b>	<b>=</b>	<b>0XSYSPASS3</b>
<b>Type of Units: -</b>	<b>=</b>	<b>String</b>
<b>Default Value: -</b>	<b>=</b>	<b>3333</b>
<b>Minimum Value: -</b>	<b>=</b>	<b>One numeric characters only</b>
<b>Maximum Value: -</b>	<b>=</b>	<b>Four numeric characters only</b>
<b>Request Command: -</b>	<b>=</b>	<b>Esc0ZXSYPASS3</b>
<b>Received String: -</b>	<b>=</b>	<b>Esc0XSYSPASS3 1,ENGINEER, 3333</b>
<b>Send Command: -</b>	<b>=</b>	<b>Esc0XSYSPASS3 1, ENGINEER,3333</b>

**PASS4 = Password Level 4****Description: - All Printers**

Set the Level 1 Name and Password.

There are three parts to the password: - **1, MANAGER, 4444**

**1** = the password is activated; change to **"0"** = No password required (deactivated).

**MANAGER** = password name can be changed as required (maximum 12 characters)

**4444** = the password can be changed, to numerical characters. (1 . 4 numerical characters)

The Password can also be changed or activated / deactivated using the Mini Terminal.

Main Menu 9 Pass codes

<b>System Variable Name: -</b>	<b>=</b>	<b>SYSPASS4</b>
<b>RecoverMode Identifier: -</b>	<b>=</b>	<b>PASS4</b>
<b>Termode Identifier: -</b>	<b>=</b>	<b>0XSYSPASS4</b>
<b>Type of Units: -</b>	<b>=</b>	<b>String</b>

Continued on next Page

<b>Default Value: -</b>	=	<b>4444</b>
<b>Minimum Value: -</b>	=	<b>One numeric characters only</b>
<b>Maximum Value: -</b>	=	<b>Four numeric characters only</b>
<b>Request Command: -</b>	=	<b>Esc0ZXSYSPASS4</b>
<b>Received String: -</b>	=	<b>Esc0XSYSPASS4 1,MANAGER, 4444</b>
<b>Send Command: -</b>	=	<b>Esc0XSYSPASS4 1,MANAGER, 4444</b>

### **PASS5 = Password Level 5**

#### **Description: - All Printers**

Set the Level 1 Name and Password.

There are three parts to the password:- **1, SUPERVISOR, 5555**

**1** = the password is activated; change to **"0"** = No password required (deactivated).

**SUPERVISOR** = password name can be changed as required (maximum 12 characters)

**5555** = the password can be changed, to numerical characters. (1 . 4 numerical characters)

The Password can also be changed or activated / deactivated using the Mini Terminal.

Main Menu 9 Pass codes

<b>System Variable Name: -</b>	=	<b>SYSPASS5</b>
<b>RecoverMode Identifier: -</b>	=	<b>PASS5</b>
<b>Termode Identifier: -</b>	=	<b>0XSYSPASS5</b>
<b>Type of Units: -</b>	=	<b>String</b>
<b>Default Value: -</b>	=	<b>5555</b>
<b>Minimum Value: -</b>	=	<b>One numeric characters only</b>
<b>Maximum Value: -</b>	=	<b>Four numeric characters only</b>
<b>Request Command: -</b>	=	<b>Esc0ZXSYSPASS5</b>
<b>Received String: -</b>	=	<b>Esc0XSYSPASS5 1, SUPERVISOR,5555</b>
<b>Send Command: -</b>	=	<b>Esc0XSYSPASS5 1, SUPERVISOR,5555</b>

### **PASS6 = Password Level 6**

#### **Description: - All Printers**

Set the Level 1 Name and Password.

There are three parts to the password: - **1, OPENDATE, 6666**

**1** = the password is activated; change to **"0"** = No password required (deactivated).

**OPENDATE** = password name can be changed as required (maximum 12 characters)

**6666** = the password can be changed, to numerical characters. (1 . 4 numerical characters)

This Password **cannot be changed or activated / deactivated** using the Mini Terminal.

Main Menu 9 Pass codes

<b>System Variable Name: -</b>	=	<b>SYSPASS6</b>
<b>RecoverMode Identifier: -</b>	=	<b>PASS6</b>
<b>Termode Identifier: -</b>	=	<b>0XSYSPASS6</b>
<b>Type of Units: -</b>	=	<b>String</b>
<b>Default Value: -</b>	=	<b>6666</b>
<b>Minimum Value: -</b>	=	<b>One numeric characters only</b>
<b>Maximum Value: -</b>	=	<b>Four numeric characters only</b>
<b>Request Command: -</b>	=	<b>Esc0ZXSYSPASS6</b>
<b>Received String: -</b>	=	<b>Esc0XSYSPASS6 1, OPENDATE, 6666</b>
<b>Send Command: -</b>	=	<b>Esc0XSYSPASS6 1, OPENDATE, 6666</b>

### **PASS7 = Password Level 7**

#### **Description: - All Printers**

Set the Level 1 Name and Password.

There are three parts to the password: - **1, PROGRAMMING, 7777**

**1** = the password is activated; change to **"0"** = No password required (deactivated).

**PROGRAMMING** = password name can be changed as required. (maximum 12 characters)  
**7777** = the password can be changed, to numerical characters. (1 . 4 numerical characters)

This Password **cannot be changed or activated / deactivated** using the Mini Terminal.  
 Main Menu 9 Pass codes

<b>System Variable Name:</b> -	=	<b>SYSPASS7</b>
<b>RecoverMode Identifier:</b> -	=	<b>PASS7</b>
<b>Termode Identifier:</b> -	=	<b>0XSYSPASS7</b>
<b>Type of Units:</b> -	=	<b>String</b>
<b>Default Value:</b> -	=	<b>7777</b>
<b>Minimum Value:</b> -	=	<b>One numeric characters only</b>
<b>Maximum Value:</b> -	=	<b>Four numeric characters only</b>
<b>Request Command:</b> -	=	<b>Esc0ZXSYSPASS7</b>
<b>Received String:</b> -	=	<b>Esc0XSYSPASS7 1, PROGRAMMING, 7777</b>
<b>Send Command:</b> -	=	<b>Esc0XSYSPASS7 1, PROGRAMMING, 7777</b>

**PASS8 = Password Level 8**

**Description: - All Printers**

Set the Level 1 Name and Password.

There are three parts to the password: - **1, TECHNICIAN, 8888**

**1** = the password is activated; change to **"0"** = No password required (deactivated).

**TECHNICIAN** = password name can be changed as required (maximum 12 characters)

**8888** = the password can be changed, to numerical characters. (1 . 4 numerical characters)

This Password **cannot be changed or activated / deactivated** using the Mini Terminal.  
 Main Menu 9 Pass codes

<b>System Variable Name:</b> -	=	<b>SYSPASS8</b>
<b>RecoverMode Identifier:</b> -	=	<b>PASS8</b>
<b>Termode Identifier:</b> -	=	<b>0XSYSPASS8</b>
<b>Type of Units:</b> -	=	<b>String</b>
<b>Default Value:</b> -	=	<b>8888</b>
<b>Minimum Value:</b> -	=	<b>One numeric characters only</b>
<b>Maximum Value:</b> -	=	<b>Four numeric characters only</b>
<b>Request Command:</b> -	=	<b>Esc0ZXSYSPASS8</b>
<b>Received String:</b> -	=	<b>Esc0XSYSPASS8 1, TECHNICIAN, 8888</b>
<b>Send Command:</b> -	=	<b>Esc0XSYSPASS8 1, TECHNICIAN, 8888</b>

**PASS9 = Password Level 9**

**Description: - All Printers**

Set the Level 1 Name and Password.

There are three parts to the password: - **1, SECURITY, 9999**

**1** = the password is activated; change to **"0"** = No password required (deactivated).

**SECURITY** = password name can be changed as required (maximum 12 characters)

**9999** = the password can be changed, to numerical characters. (1 . 4 numerical characters)

This Password **cannot be changed or activated / deactivated** using the Mini Terminal.  
 Main Menu 9 Pass codes

<b>System Variable Name:</b> -	=	<b>SYSPASS9</b>
<b>RecoverMode Identifier:</b> -	=	<b>PASS9</b>
<b>Termode Identifier:</b> -	=	<b>0XSYSPASS9</b>
<b>Type of Units:</b> -	=	<b>String</b>
<b>Default Value:</b> -	=	<b>8888</b>
<b>Minimum Value:</b> -	=	<b>One numeric characters only</b>
<b>Maximum Value:</b> -	=	<b>Four numeric characters only</b>
<b>Request Command:</b> -	=	<b>Esc0ZXSYSPASS9</b>
<b>Received String:</b> -	=	<b>Esc0XSYSPASS9 1, SECURITY, 9999</b>
<b>Send Command:</b> -	=	<b>Esc0XSYSPASS9 1, SECURITY, 9999</b>



**PCENT = Percentage of the Maximum Burn Value Allowed****Description: - All Printers**

Changes the allowable maximum burn values allowed (range 30 - 90)

<b>System Variable Name: -</b>	<b>=</b>	<b>SYSPCENT</b>
<b>RecoverMode Identifier: -</b>	<b>=</b>	<b>PCENT</b>
<b>Termode Identifier: -</b>	<b>=</b>	<b>0XSYSPCENT</b>
<b>Type of Units: -</b>	<b>=</b>	<b>String</b>
<b>Default Value: -</b>	<b>=</b>	<b>60</b>
<b>Minimum Value: -</b>	<b>=</b>	<b>30</b>
<b>Maximum Value: -</b>	<b>=</b>	<b>90</b>
<b>Request Command: -</b>	<b>=</b>	<b>Esc0ZXSYSPCENT</b>
<b>Received String: -</b>	<b>=</b>	<b>Esc0XSYSPCENT 60</b>
<b>Send Command: -</b>	<b>=</b>	<b>Esc0XSYSPCENT 60</b>

**PDEL = Print Delay Value****Description: - All Printers**

Print delay before printing. (Range 0 - 999 milliseconds)

<b>System Variable Name: -</b>	<b>=</b>	<b>SYSPDEL</b>
<b>RecoverMode Identifier: -</b>	<b>=</b>	<b>PDEL</b>
<b>Termode Identifier: -</b>	<b>=</b>	<b>0XSYSPDEL</b>
<b>Type of Units: -</b>	<b>=</b>	<b>Milliseconds</b>
<b>Default Value: -</b>	<b>=</b>	<b>0</b>
<b>Minimum Value: -</b>	<b>=</b>	<b>0</b>
<b>Maximum Value: -</b>	<b>=</b>	<b>999</b>
<b>Request Command: -</b>	<b>=</b>	<b>Esc0ZXSYSPDEL</b>
<b>Received String: -</b>	<b>=</b>	<b>Esc0XSYSPDEL 0</b>
<b>Send Command: -</b>	<b>=</b>	<b>Esc0XSYSPDEL 0</b>

**PEELC = Activates DPEEL**

This variable activates "DPEEL" when set to 1

<b>System Variable Name: -</b>	<b>=</b>	<b>SYSPEELC</b>
<b>RecoverMode Identifier: -</b>	<b>=</b>	<b>PEELC</b>
<b>Termode Identifier: -</b>	<b>=</b>	<b>0XSYSPEELC</b>
<b>Type of Units: -</b>	<b>=</b>	<b>Integer</b>
<b>Default Value: -</b>	<b>=</b>	<b>0</b>
<b>Minimum Value: -</b>	<b>=</b>	<b>0</b>
<b>Maximum Value: -</b>	<b>=</b>	<b>1</b>
<b>Request Command: -</b>	<b>=</b>	<b>Esc0ZXSYSPEELC</b>
<b>Received String: -</b>	<b>=</b>	<b>Esc0XSYSPEELC 0</b>
<b>Send Command: -</b>	<b>=</b>	<b>Esc0XSYSPEELC 0</b>

**PPM = Prints/Minute****Description: - All Printers**

Prints per Minute, must run over a minute before the update is displayed correctly

**NOTE!** The value can only be received

<b>System Variable Name: -</b>	<b>=</b>	<b>SYSPPM</b>
<b>RecoverMode Identifier: -</b>	<b>=</b>	<b>PPM</b>
<b>Termode Identifier: -</b>	<b>=</b>	<b>0XSYSPPM</b>
<b>Type of Units: -</b>	<b>=</b>	<b>minute</b>
<b>Default Value: -</b>	<b>=</b>	<b>n/a</b>
<b>Minimum Value: -</b>	<b>=</b>	<b>n/a</b>
<b>Maximum Value: -</b>	<b>=</b>	<b>n/a</b>
<b>Request Command: -</b>	<b>=</b>	<b>Esc0ZXSYSPPM</b>
<b>Received String: -</b>	<b>=</b>	<b>Esc0XSYSPPM 230</b>
<b>Send Command: -</b>	<b>=</b>	<b>n/a</b>

**PRESS1 = Minimum pressure in Newton's****Description: - All Printers**

Minimum pressure value. Sets the Minimum Pressure, Default value 20, Valid Range 20 - 40

<b>System Variable Name: -</b>	<b>=</b>	<b>SYSPRESS1</b>
<b>RecoverMode Identifier: -</b>	<b>=</b>	<b>PRESS1</b>
<b>Termode Identifier: -</b>	<b>=</b>	<b>0XSYPRESS1</b>
<b>Type of Units: -</b>	<b>=</b>	<b>Newton's</b>
<b>Default Value: -</b>	<b>=</b>	<b>20</b>
<b>Minimum Value: -</b>	<b>=</b>	<b>20</b>
<b>Maximum Value: -</b>	<b>=</b>	<b>40</b>
<b>Request Command: -</b>	<b>=</b>	<b>Esc0ZXSYSPRESS1</b>
<b>Received String: -</b>	<b>=</b>	<b>Esc0XSYPRESS1 20</b>
<b>Send Command: -</b>	<b>=</b>	<b>Esc0XSYPRESS1 20</b>

**PRESS2 = Maximum Pressure in Newton's****Description: - All Printers**

Maximum pressure value. Sets the Maximum Pressure, Default value 35, Valid Range 20 - 40

<b>System Variable Name: -</b>	<b>=</b>	<b>SYSPRESS2</b>
<b>RecoverMode Identifier: -</b>	<b>=</b>	<b>PRESS2</b>
<b>Termode Identifier: -</b>	<b>=</b>	<b>0XSYPRESS2</b>
<b>Type of Units: -</b>	<b>=</b>	<b>Newton's</b>
<b>Default Value: -</b>	<b>=</b>	<b>35</b>
<b>Minimum Value: -</b>	<b>=</b>	<b>20</b>
<b>Maximum Value: -</b>	<b>=</b>	<b>40</b>
<b>Request Command: -</b>	<b>=</b>	<b>Esc0ZXSYSPRESS2</b>
<b>Received String: -</b>	<b>=</b>	<b>Esc0XSYPRESS2 35</b>
<b>Send Command: -</b>	<b>=</b>	<b>Esc0XSYPRESS2 35</b>

**PSMTON = Programmable Mini terminal PSTM****Description: - All Printers**

With the new Mini Keypad and the latest Keypad firmware installed you can select a different type of menu. You can edit variables without stopping the Printer or Parent machine until you are ready to send the data. (Beta only still being tested)

<b>System Variable Name: -</b>	<b>=</b>	<b>SYSPSMTON</b>
<b>RecoverMode Identifier: -</b>	<b>=</b>	<b>PSMTON</b>
<b>Termode Identifier: -</b>	<b>=</b>	<b>0XSYSMTON</b>
<b>Type of Units: -</b>	<b>=</b>	<b>Integer</b>
<b>Default Value: -</b>	<b>=</b>	<b>0</b>
<b>Minimum Value: -</b>	<b>=</b>	<b>0</b>
<b>Maximum Value: -</b>	<b>=</b>	<b>1</b>
<b>Request Command: -</b>	<b>=</b>	<b>Esc0ZXSYSMTON</b>
<b>Received String: -</b>	<b>=</b>	<b>Esc0XSYSMTON 0</b>
<b>Send Command: -</b>	<b>=</b>	<b>Esc0XSYSMTON 1</b>

**RBARMT = UPCA & UPCE middle text variable****Description: - All Printers**

RBARST is read only variables returning the Font size used in the main/middle text off a UPCA and UPCE barcodes. The size can be changed using the variable BARMT.

<b>System Variable Name: -</b>	<b>=</b>	<b>SYSRBARMT</b>
<b>RecoverMode Identifier: -</b>	<b>=</b>	<b>RBARMT</b>
<b>Termode Identifier: -</b>	<b>=</b>	<b>0XSYSRBARMT</b>
<b>Type of Units: -</b>	<b>=</b>	<b>Point Size</b>
<b>Received Value: -</b>	<b>=</b>	<b>12</b>
<b>Minimum Value: -</b>	<b>=</b>	<b>n/a</b>
<b>Maximum Value: -</b>	<b>=</b>	<b>n/a</b>
<b>Request Command: -</b>	<b>=</b>	<b>Esc0ZXSYSRBARMT</b>

Continued on next Page

**Received String: -** = **Esc0ZXSYSRBARMT 12**  
**Send Command: -** = **n/a**

**RBARST** = **UPCA & UPCE small text variable**

**Description: - All Printers**

RBARST is read only variables returning the Font size used in the two outside small text off UPCA and UPCE barcodes. The size can be changed using the variable BARST.

**System Variable Name: -** = **SYSRBARST**  
**RecoverMode Identifier: -** = **RBARST**  
**Termode Identifier: -** = **0XSYSRBARST**  
**Type of Units: -** = **Point Size**  
**Received Value: -** = **9**  
**Minimum Value: -** = **n/a**  
**Maximum Value: -** = **n/a**  
**Request Command: -** = **Esc0ZXSYSRBARST**  
**Received String: -** = **Esc0ZXSYSRBARST 0**  
**Send Command: -** = **n/a**

**REEL** = **Customer Ribbon Cassette Capacity**

**Description: - All Printers**

The ribbon capacity installed in the Printer: Range 100 -1000 metres.

**System Variable Name: -** = **SYSREEL**  
**RecoverMode Identifier: -** = **REEL**  
**Termode Identifier: -** = **0XSYSREEL**  
**Type of Units: -** = **Metres**  
**Default Value: -** = **500**  
**Minimum Value: -** = **100**  
**Maximum Value: -** = **1000**  
**Request Command: -** = **Esc0ZXSYSREEL**  
**Received String: -** = **Esc0XSYSREEL 500**  
**Send Command: -** = **Esc0XSYSREEL 500**

**REL1** = **Relay 1 Operational Settings**

**Description: - All Printers**

The Relay has 3 connections Common (Com), Normally Open (N/O) and a Normally Closed (N/C) change over contacts.

Relay No 1 settings: -

0 = Stop Machine, 1 = Sequence (Default), 2 = Ready, 10 . 13 = Programmable.

0 = Stop Machine: Relay one is energized during the print cycle.

1 = Sequence: Relay one is energized during the complete print cycle.

2 = Ready: Relay one is energized when a format is ready for printing

3 =100ms Pulse: This de-energizes the relay for 100 milliseconds after completing the print cycle. This used with the cross web equipment.

Relay 1 can also be configured in real time by software. This allows the user to change or alter the relay state whilst running a custom program on an attached PC. To do this, send a value between 10 and 13 as shown below. The value sent will be activated immediately. However, you can also control the state of the relay at power ON by having the value saved to the store. For example:

Set REL1 = 11  
Set REL1 = 12

Will set the relay to ON and save the value to the store and then turn the relay OFF. At power ON the relay will turn ON until changed by a new REL1 command.

Continued on next Page

10 = Relay 1 OFF, saved to store.  
 11 = Relay 1 ON, saved to store.  
 12 = Relay 1 OFF, not saved to store.  
 13 = Relay 1 ON, not saved to store.

**System Variable Name: -** = **SYSREL1**  
**RecoverMode Identifier: -** = **REL1**  
**Termode Identifier: -** = **0XSYSREL1**  
**Type of Units: -** = **Integer**  
**Default Value: -** = **1**  
**Minimum Value: -** = **0**  
**Maximum Value: -** = **13**  
**Request Command: -** = **Esc0ZXSYSREL1**  
**Received String: -** = **Esc0XSYSREL1 1**  
**Send Command: -** = **Esc0XSYSREL1 1**

## **REL2 = Relay 2 Operational Settings**

### **Description: - All Printers**

The Relay has 3 connections Common (Com), Normally Open (N/O) and a Normally Closed (N/C) change over contacts.

Relay No 2 settings: -

0 = Start Machine, 1 = Low Foil (Default), 2 = Ready, 3 = 100ms Pulse, 10 . 13 = Programmable.

0 = Start Machine: Relay two is energized after the print cycle.  
 1 = Low Foil: Relay two is de-energized when the ribbon reaches the level set in Ribbon settings for low ribbon. (See WARN)  
 2 = Ready: Relay two is energized when a format is ready for printing  
 3 = 100ms Pulse: This de-energizes the relay for 100 milliseconds after completing the print cycle. This used with the cross web equipment.

Relay 2 can also be configured in real time by software. This allows the user to change or alter the relay state whilst running a custom program on an attached PC.

To do this, send a value between 10 and 13 as shown below. The value sent will be activated immediately. However, you can also control the state of the relay at power ON by having the value saved to the store. For example:

Set REL1 = 11  
 Set REL1 = 12

Will set the relay to ON and save the value to the store and then turn the relay OFF. At power ON the relay will turn ON until changed by a new REL1 command.

10 = Relay 1 OFF, saved to store.  
 11 = Relay 1 ON, saved to store.  
 12 = Relay 1 OFF, not saved to store.  
 13 = Relay 1 ON, not saved to store.

**System Variable Name: -** = **SYSREL2**  
**RecoverMode Identifier: -** = **REL2**  
**Termode Identifier: -** = **0XSYSREL2**  
**Type of Units: -** = **Integer**  
**Default Value: -** = **1**  
**Minimum Value: -** = **0**  
**Maximum Value: -** = **13**  
**Request Command: -** = **Esc0ZXSYSREL2**  
**Received String: -** = **Esc0XSYSREL2 1**  
**Send Command: -** = **Esc0XSYSREL2 1**

**REL3 = Relay 3 Operational Settings****Description: - All Printers**

The Relay has 3 connections Common (Com), Normally Open (N/O) and a Normally Closed (N/C) change over contacts.

Relay No 3 settings. 0 = Fault, 1 = Fault & Ready (Default), 10 . 13 = Programmable.

0 = Fault: Relay one is de-energized when the printer incurs an error.  
 1 = Fault Ready: Relay one is de-energized when printer incurs an error or the format is not ready for printing.  
 2=  
 3 =100ms Pulse: This de-energizes the relay for 100 milliseconds after completing the print cycle. This used with the cross web equipment

Relay 3 can also be configured in real time by software. This allows the user to change or alter the relay state whilst running a custom program on an attached PC. To do this, send a value between 10 and 13 as shown below. The value sent will be activated immediately. However, you can also control the state of the relay at power ON by having the value saved to the store. For example:

Set REL1 = 11

Set REL1 = 12

Will set the relay to ON and save the value to the store and then turn the relay OFF. At power ON the relay will turn ON until changed by a new REL1 command.

10 = Relay 1 OFF, saved to store.

11 = Relay 1 ON, saved to store.

12 = Relay 1 OFF, not saved to store.

13 = Relay 1 ON, not saved to store.

<b>System Variable Name: -</b>	=	<b>SYSREL3</b>
<b>RecoverMode Identifier: -</b>	=	<b>REL3</b>
<b>Termode Identifier: -</b>	=	<b>0XSYSREL3</b>
<b>Type of Units: -</b>	=	<b>Integer</b>
<b>Default Value: -</b>	=	<b>1</b>
<b>Minimum Value: -</b>	=	<b>0</b>
<b>Maximum Value: -</b>	=	<b>13</b>
<b>Request Command: -</b>	=	<b>Esc0ZXSYSREL3</b>
<b>Received String: -</b>	=	<b>Esc0XSYSREL3 1</b>
<b>Send Command: -</b>	=	<b>Esc0XSYSREL3 1</b>

**RELDEL = Relay Delay, (Before or After Printing)****Description: - All Printers**

Relay Delay in milliseconds. **(-99 to 0 to + 99 milliseconds)**

This allows the user to energize or de-energize depending on the relay settings

Start Machine, Stop Machine or Sequence. This could be before or after the end of the printed image.

If minus 50 milliseconds is set, the Sequence relay would be de-energized 50 milliseconds before completing the print cycle. This can be changed in the Mini Terminal Main Menu 6 Submenu 3 Delay

<b>System Variable Name: -</b>	=	<b>SYSRELDEL</b>
<b>RecoverMode Identifier: -</b>	=	<b>RELDEL</b>
<b>Termode Identifier: -</b>	=	<b>0XSYSRELDEL</b>
<b>Type of Units: -</b>	=	<b>Milliseconds</b>
<b>Default Value: -</b>	=	<b>0</b>
<b>Minimum Value: -</b>	=	<b>- 99</b>
<b>Maximum Value: -</b>	=	<b>+99</b>
<b>Request Command: -</b>	=	<b>Esc0ZXSYSRELDEL</b>
<b>Received String: -</b>	=	<b>Esc0XSYSRELDEL 0</b>
<b>Send Command: -</b>	=	<b>Esc0XSYSRELDEL 0</b>

**REV = Reverse Ribbon****Description: - Continuous Printers Only**

Reverse Ribbon added to ribbon amount normal indexed. Valid Range 1 - 10 millimetres.

<b>System Variable Name: -</b>	<b>=</b>	<b>SYSREV</b>
<b>RecoverMode Identifier: -</b>	<b>=</b>	<b>REV</b>
<b>Termode Identifier: -</b>	<b>=</b>	<b>0XSYSREV</b>
<b>Type of Units: -</b>	<b>=</b>	<b>Millimetres</b>
<b>Default Value: -</b>	<b>=</b>	<b>0</b>
<b>Minimum Value: -</b>	<b>=</b>	<b>0</b>
<b>Maximum Value: -</b>	<b>=</b>	<b>10</b>
<b>Request Command: -</b>	<b>=</b>	<b>Esc0ZXSYSREV</b>
<b>Received String: -</b>	<b>=</b>	<b>Esc0XSYSREV 0</b>
<b>Send Command: -</b>	<b>=</b>	<b>Esc0XSYSREV 0</b>

**RHEIGHT = Reset Printhead Height****Description: - All Printers**

Resets the printhead height for individual products, and then resets the internal measured value in software etc. Ideal to command the printer to measure a product without having to completely reset the printer etc.

<b>System Variable Name: -</b>	<b>=</b>	<b>SYSRHEIGHT</b>
<b>RecoverMode Identifier: -</b>	<b>=</b>	<b>RHEIGHT</b>
<b>Termode Identifier: -</b>	<b>=</b>	<b>0XSYSRHEIGHT</b>
<b>Type of Units: -</b>	<b>=</b>	<b>Integer</b>
<b>Default Value: -</b>	<b>=</b>	<b>0</b>
<b>Minimum Value: -</b>	<b>=</b>	<b>0</b>
<b>Maximum Value: -</b>	<b>=</b>	<b>0</b>
<b>Request Command: -</b>	<b>=</b>	<b>Esc0ZXSYSHEIGHT</b>
<b>Received String: -</b>	<b>=</b>	<b>Esc0XSYSRHEIGHT 0</b>
<b>Send Command: -</b>	<b>=</b>	<b>Esc0XSYSRHEIGHT 0</b>

**RIBGAP = Ribbon Gap Between Prints****Description: - All Printers**

Ribbon Gap (mm) you can add to the ribbon gap. Range 00.0 to 10.00 mm  
Default value =0 or 0.7mm depending on the firmware version installed in the Printer.

<b>System Variable Name: -</b>	<b>=</b>	<b>SYSRIBGAP</b>
<b>RecoverMode Identifier: -</b>	<b>=</b>	<b>RIBGAP</b>
<b>Termode Identifier: -</b>	<b>=</b>	<b>0XSYSRIBGAP</b>
<b>Type of Units: -</b>	<b>=</b>	<b>Millimetres</b>
<b>Default Value: -</b>	<b>=</b>	<b>0 Or 0.7</b>
<b>Minimum Value: -</b>	<b>=</b>	<b>0</b>
<b>Maximum Value: -</b>	<b>=</b>	<b>10</b>
<b>Request Command: -</b>	<b>=</b>	<b>Esc0ZXSYSRIBGAP</b>
<b>Received String: -</b>	<b>=</b>	<b>Esc0XSYSRIBGAP 0</b>
<b>Send Command: -</b>	<b>=</b>	<b>Esc0XSYSRIBGAP 0</b>

**RIBINIT = Ribbon Index After Cassette Replaced****Description: - All Printers**

This allows you to control the amount of ribbon being indexed, when replacing the magazine. Normally on a 107 machine it only indexes about 150 mm. Because the ribbon is wider it needs extra indexing to get the ribbon to acceptable state. Range 0 - 1000mm.

<b>System Variable Name: -</b>	<b>=</b>	<b>SYSRIBINIT</b>
<b>RecoverMode Identifier: -</b>	<b>=</b>	<b>RIBINIT</b>
<b>Termode Identifier: -</b>	<b>=</b>	<b>0XSYSRIBINIT</b>
<b>Type of Units: -</b>	<b>=</b>	<b>Millimetres</b>

<b>Default Value: -</b>	=	<b>0</b>
<b>Minimum Value: -</b>	=	<b>0</b>
<b>Maximum Value: -</b>	=	<b>1000</b>
<b>Request Command: -</b>	=	<b>Esc0ZXSYSRIBINIT</b>
<b>Received String: -</b>	=	<b>Esc0XSYSRIBINIT 0</b>
<b>Send Command: -</b>	=	<b>Esc0XSYSRIBINIT 0</b>

**RIBSAVE = Ribbon Save by printing across the Web (New Boards)**

**Description All Printers: -**

Used to limit ribbon usage, the image is indexed along the width of the print head. The image prints multiple times, moving across the length of the head after each printed image. The ribbon does not index between prints. When the image reaches the right hand side of the head it comes back to the start and the ribbon is indexed.

<b>System Variable Name: -</b>	=	<b>SYSRIBSAVE</b>
<b>RecoverMode Identifier: -</b>	=	<b>RIBSAVE</b>
<b>Termode Identifier: -</b>	=	<b>0XSYSRIBSAVE</b>
<b>Type of Units: -</b>	=	<b>Integer</b>
<b>Default Value: -</b>	=	<b>0</b>
<b>Minimum Value: -</b>	=	<b>0</b>
<b>Maximum Value: -</b>	=	<b>1</b>
<b>Request Command: -</b>	=	<b>Esc0ZXSYSRIBSAVE</b>
<b>Received String: -</b>	=	<b>Esc0XSYSRIBSAVE 0</b>
<b>Send Command: -</b>	=	<b>Esc0XSYSRIBSAVE 1</b>

**RIBTFR = Ribbon Transfer Compensation Value**

**Description All Printers: -**

Printhead temperature compensation. Value for Ribbon Grade, Set at 85 for Wax/ Resin Ribbon. Set at 105 for Resin. Tested over a period of time will prove the settings. Range 60 . 120

<b>System Variable Name: -</b>	=	<b>SYSRIBTFR</b>
<b>RecoverMode Identifier: -</b>	=	<b>RIBTFR</b>
<b>Termode Identifier: -</b>	=	<b>0XSYSRIBTFR</b>
<b>Type of Units: -</b>	=	<b>Degrees Celsius</b>
<b>Default Value: -</b>	=	<b>85</b>
<b>Minimum Value: -</b>	=	<b>60</b>
<b>Maximum Value: -</b>	=	<b>120</b>
<b>Request Command: -</b>	=	<b>Esc0ZXSYSRIBTFR</b>
<b>Received String: -</b>	=	<b>Esc0XSYSRIBTFR 85</b>
<b>Send Command: -</b>	=	<b>Esc0XSYSRIBTFR 85</b>

**RLEFT = Ribbon Left on Cassette**

**Description: - All Printers**

Amount of Metres left on Ribbon Reel. Providing you have set the reel length correctly, and have ensured you have pressed the correct button on the mini-terminal. Then you will have correct information displayed.

**NOTE!** The value can only be received

<b>System Variable Name: -</b>	=	<b>SYSRLEFT</b>
<b>RecoverMode Identifier: -</b>	=	<b>RLEFT</b>
<b>Termode Identifier: -</b>	=	<b>0XSYSRLEFT</b>
<b>Type of Units: -</b>	=	<b>Metres</b>
<b>Default Value: -</b>	=	<b>n/a</b>
<b>Minimum Value: -</b>	=	<b>n/a</b>
<b>Maximum Value: -</b>	=	<b>n/a</b>
<b>Request Command: -</b>	=	<b>Esc0ZXSYSRLEFT</b>
<b>Received String: -</b>	=	<b>Esc0XSYSRLEFT 397</b>
<b>Send Command: -</b>	=	<b>n/a</b>

**RLM = Last Stepper Motor Running****Description: - All Printers**

The last working stepper motor, useful for optimizing print speeds

**NOTE!** The value can only be received

<b>System Variable Name: -</b>	<b>=</b>	<b>SYSRLM</b>
<b>RecoverMode Identifier: -</b>	<b>=</b>	<b>RLM</b>
<b>Termode Identifier: -</b>	<b>=</b>	<b>0XSYSRM</b>
<b>Type of Units: -</b>	<b>=</b>	<b>String</b>
<b>Default Value: -</b>	<b>=</b>	<b>n/a</b>
<b>Minimum Value: -</b>	<b>=</b>	<b>n/a</b>
<b>Maximum Value: -</b>	<b>=</b>	<b>n/a</b>
<b>Request Command: -</b>	<b>=</b>	<b>Esc0ZXSYSRLM</b>
<b>Received String: -</b>	<b>=</b>	<b>Esc0XSYSRLM Vert</b>
<b>Send Command: -</b>	<b>=</b>	<b>n/a</b>

**ROLLER = Cassette Roller Diameter****Description: - Intermittent Printers Only**

Cassette Roller Diameter in Millimetres Default Value 31.8mm, Valid Range 20.00mm - 40.00mm  
Changing this diameter affects the amount of ribbon index and should be left at the default value

<b>System Variable Name: -</b>	<b>=</b>	<b>SYSROLLER</b>
<b>RecoverMode Identifier: -</b>	<b>=</b>	<b>ROLLER</b>
<b>Termode Identifier: -</b>	<b>=</b>	<b>0XSYSROLLER</b>
<b>Type of Units: -</b>	<b>=</b>	<b>Millimetres</b>
<b>Default Value: -</b>	<b>=</b>	<b>31.83</b>
<b>Minimum Value: -</b>	<b>=</b>	<b>20.00</b>
<b>Maximum Value: -</b>	<b>=</b>	<b>40.00</b>
<b>Request Command: -</b>	<b>=</b>	<b>Esc0ZXSYSROLLER</b>
<b>Received String: -</b>	<b>=</b>	<b>Esc0XSYSROLLER 31.83</b>
<b>Send Command: -</b>	<b>=</b>	<b>Esc0XSYSROLLER 31.83</b>

**RTCOSPD = Speed display****Description: - Continuous Printers only**

Set the variable RTCOSPD = 1, and the top line of the display will show the current speed updated every second. This is only for testing and my cause update problems. However, it might also show where the problems are coming from.

<b>System Variable Name: -</b>	<b>=</b>	<b>SYSRTCOSPD</b>
<b>RecoverMode Identifier: -</b>	<b>=</b>	<b>RTCOSPD</b>
<b>Termode Identifier: -</b>	<b>=</b>	<b>0XSYSRTCOSPD</b>
<b>Type of Units: -</b>	<b>=</b>	<b>Integer</b>
<b>Default Value: -</b>	<b>=</b>	<b>0</b>
<b>Minimum Value: -</b>	<b>=</b>	<b>0</b>
<b>Maximum Value: -</b>	<b>=</b>	<b>2</b>
<b>Request Command: -</b>	<b>=</b>	<b>Esc0ZXSYSRTCOSPD</b>
<b>Received String: -</b>	<b>=</b>	<b>Esc0XSYSRTCOSPD 0</b>
<b>Send Command: -</b>	<b>=</b>	<b>Esc0XSYSRTCOSPD 0</b>

**SETTEMP = Development only Head temperature****Description: - All Printers**

Special feature for testing only. Allows printhead temperatures to be forced to specific temperature.

**Changing this could burn out the Print head.**

<b>System Variable Name: -</b>	<b>=</b>	<b>SYSSETTEMP</b>
<b>RecoverMode Identifier: -</b>	<b>=</b>	<b>SETTEMP</b>
<b>Termode Identifier: -</b>	<b>=</b>	<b>0XSYSSETTEMP</b>
<b>Type of Units: -</b>	<b>=</b>	<b>String</b>



<b>Default Value: -</b>	=	<b>0</b>
<b>Minimum Value: -</b>	=	<b>0</b>
<b>Maximum Value: -</b>	=	<b>0</b>
<b>Request Command: -</b>	=	<b>Esc0ZXSYSSETTEMP</b>
<b>Received String: -</b>	=	<b>Esc0XSYSSETTEMP</b>
<b>Send Command: -</b>	=	<b>Esc0XSYSSETTEMP</b>

**SFG = Super Fast Graphic's**

**Description: - All Printers**

This variable is for updating Graphic fields from a database. Must be used with a communication lead USB to USB. Used with **Beta Version 5012946.Hex**

<b>System Variable Name: -</b>	=	<b>SYSSFG</b>
<b>RecoverMode Identifier: -</b>	=	<b>SFG</b>
<b>Termode Identifier: -</b>	=	<b>0XSYSSFG</b>
<b>Type of Units: -</b>	=	<b>Integer</b>
<b>Default Value: -</b>	=	<b>0</b>
<b>Minimum Value: -</b>	=	<b>0</b>
<b>Maximum Value: -</b>	=	<b>1</b>
<b>Request Command: -</b>	=	<b>Esc0ZXSYSFSG</b>
<b>Received String: -</b>	=	<b>Esc0XSYSSFG 0</b>
<b>Send Command: -</b>	=	<b>Esc0XSYSSFG 0</b>

**SHIFT = Shift Code, Number per Day & Name Settings**

**Description: - All Printers**

Automatic Shift Print Variable Fields Default values are S1,S2,S3,S4,S5,S6,S7 these can be customised using up to 5 alphanumeric characters with a maximum of 24 shift changes. For more information see "**Codesoft Overview Supplementary. doc**"

<b>System Variable Name: -</b>	=	<b>SYSSHIFT</b>
<b>RecoverMode Identifier: -</b>	=	<b>SHIFT</b>
<b>Termode Identifier: -</b>	=	<b>0XSYSSHIFT</b>
<b>Type of Units: -</b>	=	<b>String</b>
<b>Default Value: -</b>	=	<b>S1,S2,S3,S4,S5,S6,S7</b>
<b>Minimum Value: -</b>	=	<b>See above</b>
<b>Maximum Value: -</b>	=	<b>See above</b>
<b>Request Command: -</b>	=	<b>Esc0ZXSYSSSHIFT</b>
<b>Received String: -</b>	=	<b>Esc0XSYSSHIFT S1,S2,S3,S4,S5,S6,S7</b>
<b>Send Command: -</b>	=	<b>Esc0XSYSSHIFT S1,S2,S3,S4,S5,S6,S7</b>

**SINGLEF = Single Image Memory Storage Only**

**Description: - All Printers**

**Set to: -**

0 = Normal Memory working.

1 = Only 1 format can be in the printer. As you send a new format, its deletes the first one.

2 = With a format Activated, you can download to the printer memory as many formats as required.

When selecting a new format all formats except the selected one will be deleted.

<b>System Variable Name: -</b>	=	<b>SYSSINGLEF</b>
<b>RecoverMode Identifier: -</b>	=	<b>SINGLEF</b>
<b>Termode Identifier: -</b>	=	<b>0XSYSSINGLEF</b>
<b>Type of Units: -</b>	=	<b>Integer</b>
<b>Default Value: -</b>	=	<b>0</b>
<b>Minimum Value: -</b>	=	<b>0</b>
<b>Maximum Value: -</b>	=	<b>2</b>
<b>Request Command: -</b>	=	<b>Esc0ZXSYS SINGLEF</b>
<b>Received String: -</b>	=	<b>Esc0XSYSSINGLEF 0</b>
<b>Send Command: -</b>	=	<b>Esc0XSYSSINGLEF 0</b>

**SPEED1 = Minimum print speed****Description: - Intermittent Printers Only**

Minimum Speed Value (Intermittent Printers Only Valid Range 50 . 400)

<b>System Variable Name: -</b>	<b>=</b>	<b>SYSSPEED1</b>
<b>RecoverMode Identifier: -</b>	<b>=</b>	<b>SPEED1</b>
<b>Termode Identifier: -</b>	<b>=</b>	<b>0XSYSSPEED1</b>
<b>Type of Units: -</b>	<b>=</b>	<b>Millimetres</b>
<b>Default Value: -</b>	<b>=</b>	<b>50</b>
<b>Minimum Value: -</b>	<b>=</b>	<b>50</b>
<b>Maximum Value: -</b>	<b>=</b>	<b>1000</b>
<b>Request Command: -</b>	<b>=</b>	<b>Esc0ZXSYSSPEED1</b>
<b>Received String: -</b>	<b>=</b>	<b>Esc0XSYSSPEED1 50</b>
<b>Send Command: -</b>	<b>=</b>	<b>Esc0XSYSSPEED1 50</b>

**SPEED2 = Maximum Print Speed****Description: - Intermittent Printers Only**

Maximum Speed Value (Intermittent Printers Only Valid Range 50 . 400)

<b>System Variable Name: -</b>	<b>=</b>	<b>SYSSPEED2</b>
<b>RecoverMode Identifier: -</b>	<b>=</b>	<b>SPEED2</b>
<b>Termode Identifier: -</b>	<b>=</b>	<b>0XSYSSPEED2</b>
<b>Type of Units: -</b>	<b>=</b>	<b>Millimetres</b>
<b>Default Value: -</b>	<b>=</b>	<b>400</b>
<b>Minimum Value: -</b>	<b>=</b>	<b>50</b>
<b>Maximum Value: -</b>	<b>=</b>	<b>1000</b>
<b>Request Command: -</b>	<b>=</b>	<b>Esc0ZXSYSSPEED2</b>
<b>Received String: -</b>	<b>=</b>	<b>Esc0XSYSSPEED2 400</b>
<b>Send Command: -</b>	<b>=</b>	<b>Esc0XSYSSPEED2 400</b>

**STATUS = Status Screen display****Description: - All Printers**

Allows the user to switch on the status screen. Could cause problems with High Speed printing or Automatic updates. Set 0 to switch off, Set 1 to switch on.

<b>System Variable Name: -</b>	<b>=</b>	<b>SYSSTATUS</b>
<b>RecoverMode Identifier: -</b>	<b>=</b>	<b>STATUS</b>
<b>Termode Identifier: -</b>	<b>=</b>	<b>0XSYS TATUS</b>
<b>Type of Units: -</b>	<b>=</b>	<b>Integer</b>
<b>Default Value: -</b>	<b>=</b>	<b>0</b>
<b>Minimum Value: -</b>	<b>=</b>	<b>0</b>
<b>Maximum Value: -</b>	<b>=</b>	<b>1</b>
<b>Request Command: -</b>	<b>=</b>	<b>Esc0ZXSYSSTATUS</b>
<b>Received String: -</b>	<b>=</b>	<b>Esc0XSYSSTATUS 0</b>
<b>Send Command: -</b>	<b>=</b>	<b>Esc0XSYSSTATUS 0</b>

**TEST = Test and Development only****TIME = The actual printer time****Description: - All Printers**

The actual time set in the printer. In the first instance the RTC (Real Time Clock) is set in the boot up menu.

From then on any changes made would normally be changed using the Mini Terminal, Main Menu 4, Submenu 1 Time/ Date.

<b>System Variable Name: -</b>	<b>=</b>	<b>SYSTEMTIME</b>
<b>RecoverMode Identifier: -</b>	<b>=</b>	<b>TIME</b>
<b>Termode Identifier: -</b>	<b>=</b>	<b>0XSYSTEMTIME</b>

<b>Type of Units: -</b>	=	<b>String</b>
<b>Default Value: -</b>	=	<b>n/a</b>
<b>Minimum Value: -</b>	=	<b>n/a</b>
<b>Maximum Value: -</b>	=	<b>n/a</b>
<b>Request Command: -</b>	=	<b>Esc0ZXSYSTIME</b>
<b>Received String: -</b>	=	<b>Esc0XSYSTIME 08:31</b>
<b>Send Command: -</b>	=	<b>Esc0XSYSTIME 08:33</b>

**TIMEOFF = Time Offset in minutes**

**Description: - All Printers**

Time offset from Midnight, values in minutes. This allows the user to determine when a customer wants to change dates automatically. Can be plus or minus, Valid Range -720 to +720. For more information see "**Codesoft Overview Manual. doc**"

<b>System Variable Name: -</b>	=	<b>SYSTIMEOFF</b>
<b>RecoverMode Identifier: -</b>	=	<b>TIMEOFF</b>
<b>Termode Identifier: -</b>	=	<b>0XSYSTIMEOFF</b>
<b>Type of Units: -</b>	=	<b>Minutes</b>
<b>Default Value: -</b>	=	<b>0</b>
<b>Minimum Value: -</b>	=	<b>-720</b>
<b>Maximum Value: -</b>	=	<b>+720</b>
<b>Request Command: -</b>	=	<b>Esc0ZXSYSTIMEOFF</b>
<b>Received String: -</b>	=	<b>Esc0XSYSTIMEOFF 360</b>
<b>Send Command: -</b>	=	<b>Esc0XSYSTIMEOFF 360</b>

**TYPE = The Type of Printer Installed**

**Description: - All Printers**

0 = Standard Printer Automatic sets pressure

1 = Direct Thermal Automatic sets pressure

2 = Not Used,

3 = Detects on every print the pressure. Ideal for cartons etc, works slower than Automatic

<b>System Variable Name: -</b>	=	<b>SYSTYPE</b>
<b>RecoverMode Identifier: -</b>	=	<b>TYPE</b>
<b>Termode Identifier: -</b>	=	<b>0XSYSTYPE</b>
<b>Type of Units: -</b>	=	<b>Integer</b>
<b>Default Value: -</b>	=	<b>0</b>
<b>Minimum Value: -</b>	=	<b>0</b>
<b>Maximum Value: -</b>	=	<b>3</b>
<b>Request Command: -</b>	=	<b>Esc0ZXSYSTYPE</b>
<b>Received String: -</b>	=	<b>Esc0XSYSTYPE 0</b>
<b>Send Command: -</b>	=	<b>Esc0XSYSTYPE 0</b>

**UPDTIME = Cross web variable field updates**

**Description: - Continuous Printer Only (Cross web Installations)**

Delay before variable fields are updated or incremented, in cross web machines, in seconds.

Range 0 - 100 seconds.

<b>System Variable Name: -</b>	=	<b>SYSUPDTIME</b>
<b>RecoverMode Identifier: -</b>	=	<b>UPDTIME</b>
<b>Termode Identifier: -</b>	=	<b>0XSYSUPDTIME</b>
<b>Type of Units: -</b>	=	<b>Seconds</b>
<b>Default Value: -</b>	=	<b>1</b>
<b>Minimum Value: -</b>	=	<b>0</b>
<b>Maximum Value: -</b>	=	<b>10</b>
<b>Request Command: -</b>	=	<b>Esc0ZXSYSUPDTIME</b>
<b>Received String: -</b>	=	<b>Esc0XSYSUPDTIME 0</b>
<b>Send Command: -</b>	=	<b>Esc0XSYSUPDTIME 0</b>

**UPERR = Returns Information back to the connected Computer****Description: - All Printers**

Alternative to “UPMOD” Sets Action for talking back to a computer,

**Set to: -**

1 = Returns %**READY**” Dual image memory, but the printer will not work if the image memory has not been updated. Returns an error “**Print before image update, 139**” the same as UPMOD 3

2 = Ignores all Print triggers until an image update has been received. Gives no error or error messages.

<b>System Variable Name: -</b>	=	<b>SYSUPERR</b>
<b>RecoverMode Identifier: -</b>	=	<b>UPERR</b>
<b>Termode Identifier: -</b>	=	<b>0XSYSUPERR</b>
<b>Type of Units: -</b>	=	<b>Integer</b>
<b>Default Value: -</b>	=	<b>0</b>
<b>Minimum Value: -</b>	=	<b>0</b>
<b>Maximum Value: -</b>	=	<b>2</b>
<b>Request Command: -</b>	=	<b>Esc0ZXSYSUPERR</b>
<b>Received String: -</b>	=	<b>Esc0XSYSUPERR 0</b>
<b>Send Command: -</b>	=	<b>Esc0XSYSUPERR 0</b>

**UPFAST = Update of Insertion Variable Fields****Description: - All Printers**

Allows updating of Variables.

Utilising the "I" insert variable command. Updates a single memory plane ready for printing.

0 = Off,

1 = Single plane updating, and saves to the file store. **(Not recommended)**

2 = Single Plane Updating (no saving of update in the file store) When format is edited or the cassette removed/ribbon fail an update is done of all type 0 variables that have changed.

<b>System Variable Name: -</b>	=	<b>SYSUPFAST</b>
<b>RecoverMode Identifier: -</b>	=	<b>UPFAST</b>
<b>Termode Identifier: -</b>	=	<b>0XSYSUPFAST</b>
<b>Type of Units: -</b>	=	<b>Integer</b>
<b>Default Value: -</b>	=	<b>0</b>
<b>Minimum Value: -</b>	=	<b>0</b>
<b>Maximum Value: -</b>	=	<b>2</b>
<b>Request Command: -</b>	=	<b>Esc0ZXSYSUPFAST</b>
<b>Received String: -</b>	=	<b>Esc0XSYSUPFAST 0</b>
<b>Send Command: -</b>	=	<b>Esc0XSYSUPFAST 0</b>

**UPMOD = Returns Information back to the connected Computer****Description: - All Printers**

Sets Action for talking back to a computer, **Set to: -**

1 = Returns “**DONE**” single memory

2 = Returns %**READY**” Dual image memory, no checking of image update when using databases etc.

3 = Returns %**READY**” Dual image memory, but the printer will not work if the image memory has not been updated. Returns an error “**Print before image update, 139**,”

4 = Outputs specific variable information % Command+to communications port after finished printing.

5 = Outputs specific variable information "Y Command+to communications port as printing.

See Escape Code Manual Version 2.0, for full explanations.

<b>System Variable Name: -</b>	=	<b>SYSUPMOD</b>
<b>RecoverMode Identifier: -</b>	=	<b>UPMOD</b>
<b>Termode Identifier: -</b>	=	<b>0XSYSUPMOD</b>

<b>Type of Units: -</b>	<b>=</b>	<b>Integer</b>
<b>Default Value: -</b>	<b>=</b>	<b>0</b>
<b>Minimum Value: -</b>	<b>=</b>	<b>0</b>
<b>Maximum Value: -</b>	<b>=</b>	<b>4</b>
<b>Request Command: -</b>	<b>=</b>	<b>Esc0ZXSYSUPMOD</b>
<b>Received String: -</b>	<b>=</b>	<b>Esc0XSYSUPMOD 0</b>
<b>Send Command: -</b>	<b>=</b>	<b>Esc0XSYSUPMOD 0</b>

**UPSLOW = Update of Insertion Variable Fields**

**Description: - All Printers**

UPSLOW when set to 1, the READY output is sent after the image has started to print, to ensure very fast updates have not been missed by the system. (See: - UPMOD = 3 or UPERR = 1)

<b>System Variable Name: -</b>	<b>=</b>	<b>SYSUPSLOW</b>
<b>RecoverMode Identifier: -</b>	<b>=</b>	<b>UPSLOW</b>
<b>Termode Identifier: -</b>	<b>=</b>	<b>0XSYSUPSLOW</b>
<b>Type of Units: -</b>	<b>=</b>	<b>Integer</b>
<b>Default Value: -</b>	<b>=</b>	<b>0</b>
<b>Minimum Value: -</b>	<b>=</b>	<b>0</b>
<b>Maximum Value: -</b>	<b>=</b>	<b>1</b>
<b>Request Command: -</b>	<b>=</b>	<b>Esc0ZXSYSUPSLOW</b>
<b>Received String: -</b>	<b>=</b>	<b>Esc0XSYSUPSLOW 0</b>
<b>Send Command: -</b>	<b>=</b>	<b>Esc0XSYSUPSLOW 0</b>

**VBURN = Automatic Compensation for Burn whilst Accelerating.**

**Description: - Intermittent Printers Only**

Automatically the burn value is compensated during printing, whilst accelerating up to the required print speed. Compensation for Variable burns. 0 = Off, 1 = On

<b>System Variable Name: -</b>	<b>=</b>	<b>SYSVBURN</b>
<b>RecoverMode Identifier: -</b>	<b>=</b>	<b>VBURN</b>
<b>Termode Identifier: -</b>	<b>=</b>	<b>0XSYSVBURN</b>
<b>Type of Units: -</b>	<b>=</b>	<b>Integer</b>
<b>Default Value: -</b>	<b>=</b>	<b>0</b>
<b>Minimum Value: -</b>	<b>=</b>	<b>0</b>
<b>Maximum Value: -</b>	<b>=</b>	<b>1</b>
<b>Request Command: -</b>	<b>=</b>	<b>Esc0ZXSYSVBURN</b>
<b>Received String: -</b>	<b>=</b>	<b>Esc0XSYSVBURN 0</b>
<b>Send Command: -</b>	<b>=</b>	<b>Esc0XSYSVBURN 0</b>

**VPMAX = Allows small image position adjustment.**

**Description: - Intermittent Printers Only**

This is to allow small image position adjustment on intermittent printer with in the image memory. Also see "VPSET"

Set "VPMAX" up to the maximum number of dots of adjustment allowed. This effectively increases the image size; this could cause problems when combined with big images and or fast printing.

<b>System Variable Name: -</b>	<b>=</b>	<b>SYSVPMAX</b>
<b>RecoverMode Identifier: -</b>	<b>=</b>	<b>VPMAX</b>
<b>Termode Identifier: -</b>	<b>=</b>	<b>0XSYSVPMAX</b>
<b>Type of Units: -</b>	<b>=</b>	<b>Dots</b>
<b>Default Value: -</b>	<b>=</b>	<b>0</b>
<b>Minimum Value: -</b>	<b>=</b>	<b>0</b>
<b>Maximum Value: -</b>	<b>=</b>	<b>30</b>
<b>Request Command: -</b>	<b>=</b>	<b>Esc0ZXSYSVPMAX</b>
<b>Received String: -</b>	<b>=</b>	<b>Esc0XSYSVPMAX</b>
<b>Send Command: -</b>	<b>=</b>	<b>Esc0XSYSVMAX</b>

**VPSET = Moves the image in the image memory in dots.**

**Description: - Intermittent Printers Only**

This allows the user to move the image in dots from zero to the maximum of dots set in "VPMAX"  
Used for very accurate printing when the substrate stop poison is incorrect. This does not move the  
Print head, only the Image in the image memory. Worked in conjunction with the parent machine.  
Probably using optical positioning equipment, automatically sending the data to the printer.

**System Variable Name: - = SYSVPSET**  
**RecoverMode Identifier: - = VPSET**  
**Termode Identifier: - = 0XSYSVPSET**  
**Type of Units: - = Dots**  
**Default Value: - = 0**  
**Minimum Value: - = 0**  
**Maximum Value: - = 30**  
**Request Command: - = Esc0ZXSYSVPSET**  
**Received String: - = Esc0XSYSVPSET 0**  
**Send Command: - = Esc0XSYSVSET 0**

**WACT = Stop Printing on Low Foil Warning**

**Description: - All Printers**

Warning Action, to stop printing if low foil is reached. Set to 1 to activate the printer to stop printing if  
low foil is reached. "Default Value = 0"

**System Variable Name: - = SYSWACT**  
**RecoverMode Identifier: - = WACT**  
**Termode Identifier: - = 0XSYSWACT**  
**Type of Units: - = Integer**  
**Default Value: - = 0**  
**Minimum Value: - = 0**  
**Maximum Value: - = 1**  
**Request Command: - = Esc0ZXSYSWACT**  
**Received String: - = Esc0XSYSWACT 0**  
**Send Command: - = Esc0XSYSWACT 0**

**WARN = Ribbon Low Warning**

**Description: - All Printers**

Ribbon Warning Length, In Metres the amount of ribbon that is left on the reel before the relay  
switches and displays a message on the mini-Terminal. Valid Range 0 - 100 Metres.  
This can be changed in the Mini Terminal Main Menu 4, Submenu 5 Ribbon settings

**System Variable Name: - = SYSWARN**  
**RecoverMode Identifier: - = WARN**  
**Termode Identifier: - = 0XSYSWARN**  
**Type of Units: - = Metres**  
**Default Value: - = 15**  
**Minimum Value: - = 0**  
**Maximum Value: - = 100**  
**Request Command: - = Esc0ZXSYSWARN**  
**Received String: - = Esc0XSYSWARN 15**  
**Send Command: - = Esc0XSYSWARN 15**