

Up dated 26/09/12

Printer Firmware Advanced Boards. Supports USB & TCP/IP: -

Firmware Name **A401004X.HEX** Printer Version Number **401- 004 XA**

Printer Firmware Normal Boards & 53E: -

Firmware Name **N4_00X.HEX** Printer Version Number **4.00 XN**

Note: - **X** changes too **I** (Intermittent), **C** (Continuous) & **E** (Economy) dependent on the printer type

A401004X.Hex 13/06/2012

Printer Version name **401-004 XA**

System variable: SPEED1; minimum value changed to 20 the default value was 50. Print quality reduces at speeds below 50. **This change requested by Open Date France**
Not officially released.

A401003X.Hex 21/05/2012

Printer Version name **401-003 XA**

QR CODE correction (Rotation, Security)

A4_02X.Hex

Development only not officially released.

N4_01X.Hex 16/02/2012

Integrate the 2D barcode: QR CODE (and Micro-QR Code)
Not officially released.

A4_00X.Hex 16/02/2012

System Variable RIBSAVE worked in beta versions only. The fault corrected in this version.

Multi Printing fault when the printer generates the 4th image using Global graphics. Beta version 5.012957

New System Variable **SFG**

This variable is for updating graphic images from a database.

COCWOI= Crossweb setting. When the prints are too close for high speed, ignores the next print when set to =1. Set to 2 this ignores the remaining prints and waits for the next print signal. Do not use with CORFAST.

H File Text Variable Type fault corrected

Variable Text field Type A

Use the 'H' command that allows a file to be written directly to the file store.

Esc0HfileTHT00001 9000045

Esc1234567890QWERTYUIOP1234567890QWERTYUIOP12345

For more information see the Escape Code Manual

PDF417

The introduction of, the 2D PDF412 Code. Can now be generated using Codesoft Driver version **V31_1_5**

Updating Counter fields Type 4

The counter field can be changed using **<Esc>0ICounter0 4000027** the next printed count would be **000027**

Also see the System Variable Description Manual regarding **SYSCOUNTWB** for storing the last printed count.

ECounter0 4000001,1,1,1,999999,**990002**

On reselection of the Format from the Storage memory would print **990003**

Beta version of code: - th2av52845. Hex Printer Name 5.0126451A released to Germany

New System Variable CEFIXED

Continuous Printers Only

Up dated 26/09/12

CEFIXED allows the user to set a fixed speed of the shaft encoder enabling the calculation for the burn to be the same for every print. Used with intermittent Labelling Machines that have a fast start and stop acceleration with a constant speed. Used when some format areas are over 160mm in length. Range 0 - 1000mm/sec

Beta version of code: - th2av52639. Hex Printer Name 5.012639IA released to Germany

New system variable SYSBAUD

This Variable will only work with EEPROM Version 6.3 and above.

New system variable %SYSBAUD+allowing the baud rate to be changed using RecoverMode or Termode

This Variable will only work with EEPROM Version 6.3 and above.

Beta version of code: - th2av52639. Hex Printer Name 5.012639IA released to Germany

A306011X.hex & N306012.hex 20/01/10

Problem with system variable CFRPT2 = 1 When %Printer Locked+you cannot send or receive any information from any computer. (Serial port is blocked)

Using a Continuous Printer, unlock the system using the password send the format, and had the Error "Format not found" After rebooting the format was recognised. This fault appeared with continuous printer only. Corrected in this version. (Issued to Open Date France only, not officially released)

A306008X.hex 14/05/2009

New System Variable: - MSPSLOW

Requested by Open Date Germany.

If the value set in MCSPEED is reached or less than and MCPSLOW is 1 and error message "Machine speed too slow" and the fault relay is de-activated.

A305092.hex 05/11/2008

Development only not officially released.

A305084.hex 11/06/2008

New System Variables

All Printers

SYSCOUNTWB In Recovermode **COUNTWB**

Default value =0 to retain the counter field printed value this has to be set to 1.

The value is retained when: -

- Selecting formats for printing
- Reselecting the same format
- Changing burns & speed etc
- Local and Globe rotation
- Editing a variable fields i.e. Lot, Batch etc.
- Power down and reboot.
- Changing other parameters in the Mini terminal. **(Not the Counter Fields)**

The value is lost when: -

When you are resending the format from Codesoft, Recovermode or Termode back to the Printer. (Unless you enter the last printed value in the counter field before sending)

When you edit the value in the Counter field within the Mini Terminal

Up dated 26/09/12

If you have two different counter fields in the same format changing one field say Counter1 Counter0 will restart from the last saved value.

```

OFCountcheck
OPSPEED 0100
OPBURN1 0280
OPBURN2 0280
OPPRESSURE 28
OPOFFSET 00
OPROTATE 0
OECOUNTER0 4000001,1,1,1,1,9999999,96
OECOUNTER1 40021,1,1,2,9999
OB07012500070195040000\0Counter0\0
OTARIALB14 0180026114001\0Counter0\0
OTARIALB14 0228032514001\0Counter1\0
OQ000000
OK

```

The last saved value in red.
Saved value lost after editing.

I printed until the counter field was **120**, edited Counter1 to 0021. On restart, Counter0 printed **97** not **121**. (Look in conjunction with the above format)

If you need to Change say Counter1 and require Counter0 to maintain its last printed counted value. Reselect the same format from the storage memory this will save the last printed value to memory do this before you edit Counter1.

Remember when you change values in the Mini Terminal the counter field on roll over will be the value entered in the field. (Counter1 will roll over to **21** not Zero or 1)

You can also edit the saved (**96**) value in Recovermode if you need to.

All Printers

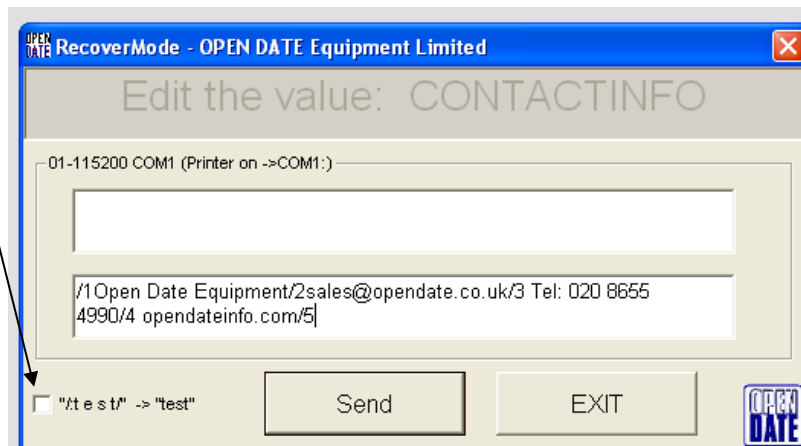
SYSCONTACINFO In Recovermode **CONTACTINFO**

Allows the user to change the information shown in Menu 7 of the Mini Terminal

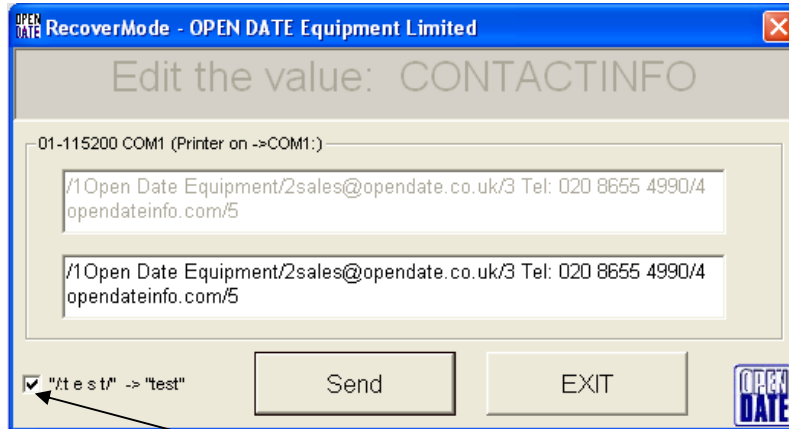
RecoverMode version 3.0.3 Firmware Version **A305084X.HEX & N305085X.HEX** and above

In RecoverMode double click on the variable CONTACTINFO

Uncheck box CONTACTINFO+



Type **/1** Then your text max **20/2** The second line **/3** third line **/4** fourth line **/5**
Max between 20
Only twenty spaces and alphanumeric characters on each line



To re edit the Information Uncheck the Box

RecoverMode version 3.0.3 has not been released.

All Printers

SYSCCHARSET In Recovermode **CHARSET**

Code page Western or Central European

All Printers

This variable allows the possibility to set a different code page at this moment these two.

Value 1252 = Western

Value 1250 = Central European

All Printers

SYSNNOOVERFLOWMSG In Recovermode **NOOVERFLOWMSG**

Set to 1 any **X** or **Y** over or under flows in the format, are chopped to fit the page size, and the printer gives no error message. **Users beware the over under flow parts of the format will not be printed.**

System Variable used in Beta codes for specific Customer applications.

BARMT **UPCA & UPCE middle text variable**



All Printers

This variable you can change the font size used in the main/middle text off a UPCA and UPCE barcodes. The original size can be viewed in the variable **%RBARMT**

BARST **UPCA & UPCE small text variable**



All Printers

This variable you can change the font size used on the outside text off a UPCA and UPCE barcodes. (The zero 0 and 5) The original size can be viewed in the variable **%RBARST**

Up dated 26/09/12

RBARMT UPCA & UPCE middle text variable

All Printers

RBARST is read only variables returning the Font size used in the main/middle text off a UPCA and UPCE barcodes. The size can be changed using the variable BARMT.

RBARST UPCA & UPCE small text variable

All Printers

RBARST Is read only variables returning the Font size used in the two outside small text off UPCA and UPCE barcodes. The size can be changed using the variable BARST.

UPSLOW Update of Insertion Variable Fields

All Printers

UPSLOW when set to 1, the READY output is sent after the image has started to print, to ensure very fast updates have not been missed by the system. (See: - UPMOD = 3 or UPERR = 1)

See “**System Variables Manual** ” for more information on system variables