



Open Date Equipment Ltd.
Unit's 8 & 9 Denvale Trade Park,
Morden Road,
Mitcham,
Surrey. CR4 4DG

Tel:- 020 8655 4999

Fax:- 020 8655 4990

www.opendate.co.uk

"Codesoft 6 Premier" Overview Manual

Thermocode Series 2 (all Printers)

<u>Description</u>	<u>Page</u>
Foreword & Codesoft Installation.	2
Printer Set Up	3 - 4
Page Set Up	5 - 6
Configuration of saved Formats	7
Saving a New Format	8
Printer Settings (General Menu)	9
Downloading Firmware (automatic)	10 - 11
Downloading Firmware (manually)	12 - 13
Downloading True Type Fonts. (*.TTF)	14 - 16
Downloading Bit Map Fonts. (*.SFP)	17
Simulating True Type for Bitmaps	18 - 19
Checking Fonts & Format Installation	20 - 21
Other Printer Settings	22
Deleting the Printer Font List	22 - 23
Creating Automatic Date/Time Fields	24 - 25
Date Fields, rollovers before and after Midnight	26 - 28
Creating Variable Counter Fields	29- 31
Creating a Variable Text Field	32
Variable Fields Displaying the Filler	33
Text Generation	34
Creating a Barcode	35 - 36
Utilising Graphic images	37
Pod2.INI (Advanced users)	38 - 40
Shortcut Keys	41

Foreword

Through out this document, trademarked names may be used. Rather than put a trademark (™ or ®) symbol in every occurrence of a trademarked name, we state that we are using the names only in an editorial fashion, and to the benefit of the trademark owner, with no intention of infringement.

This manual is a only a general overview on setting up the Thermocode Series 2 range of Thermal transfer printers, so they can be controlled & programmed from within the Codesoft software. If you experience any difficulties in setting up your printer, please contact your local supplier.

All the Thermocode Series 2 printer's, utilise True type or Bitmap fonts that can be downloaded from within Codesoft. This enables all types of variable text and counter fields to be created and then controlled from within the printer software.

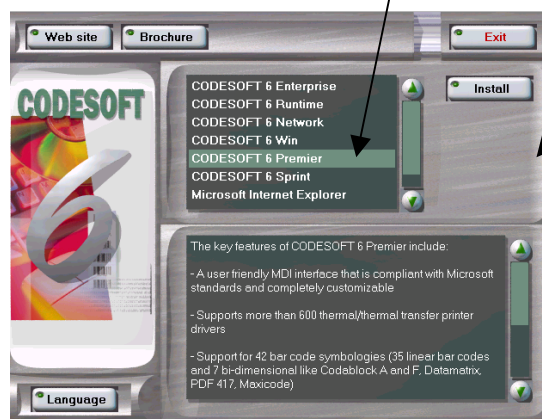
As well as this User's Guide & within the Codesoft software there are comprehensive "help" menu's that also assist in design of the required formats for printing.

Codesoft Installation

Supplied with the Software is a dongle, a Software Protection key. Which must be installed, into the printer port of your computer **LPT1** or **USB** port depending on the type of dongle provided. Once installed, allows Codesoft 6 Premier to work correctly.

The Codesoft 6 CD will automatically load the software and display the dialog box shown below.

Highlight CODESOFT 6 Premier and Click on Install. Follow the Instructions.

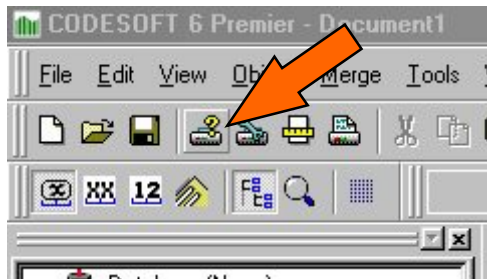


Using the CD supplied, access the directory Codesoft (V11.10.17) and double click on the "**Install.exe**" file. This automatically loads the installation program.

Select the driver "**Codesoft 6.10 Version11.10.17**" and then select "**OK**" to start the installation.

The program now runs automatically, following the instructions carefully on the screen

Printer Set Up

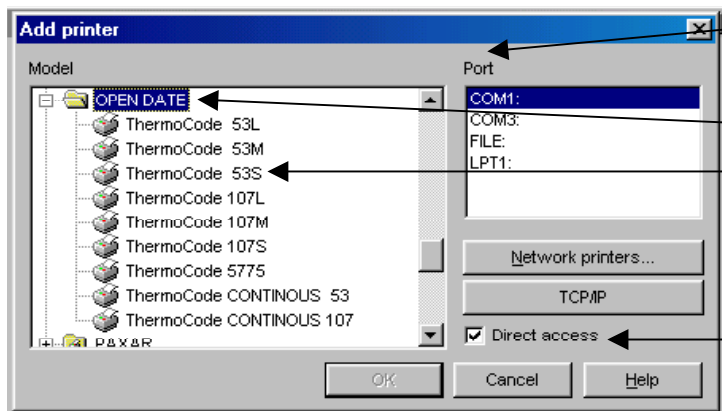


After Codesoft 6 Premier is Installed.

You must set up the model of Printer being used.

Click on the icon showing a printer which is highlighted with a question mark.

The Dialog Box below will appear. Click with your mouse on "Add"



A new Dialog Box will appear.

Select the "OPEN DATE" directory

Select the model of Printer.

Select the communications port your Computer uses.

Ensure the "Direct access" is ticked.

Then Click on "OK", to save settings.



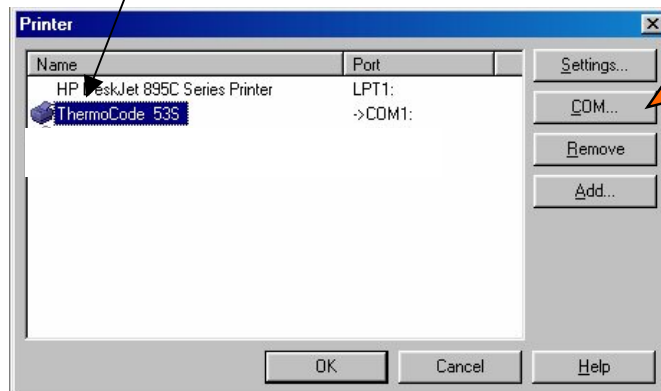
If more than one model of printer is to be used, repeat the above.

Before clicking "OK" see next page

Printer set Up (continued)

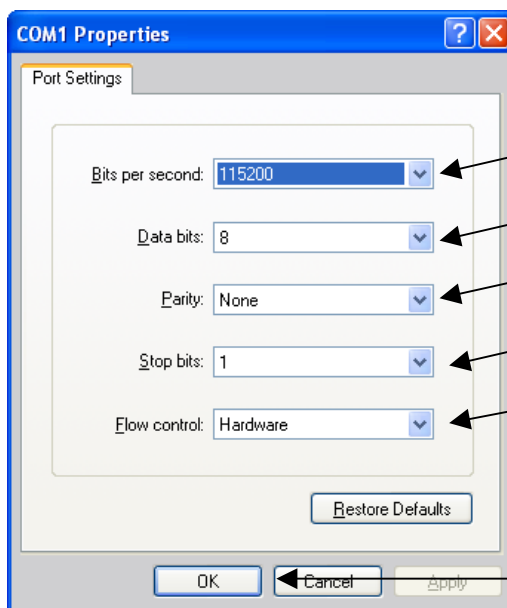
Before clicking on "OK" The printer communication settings have to be set up.

Click your mouse on "COM"



All the Thermocode Series 2 Printers, have a maximum Baud rate of **115200**.

Set Port Settings as:-



Bits per second = 115200

Data bits = 8

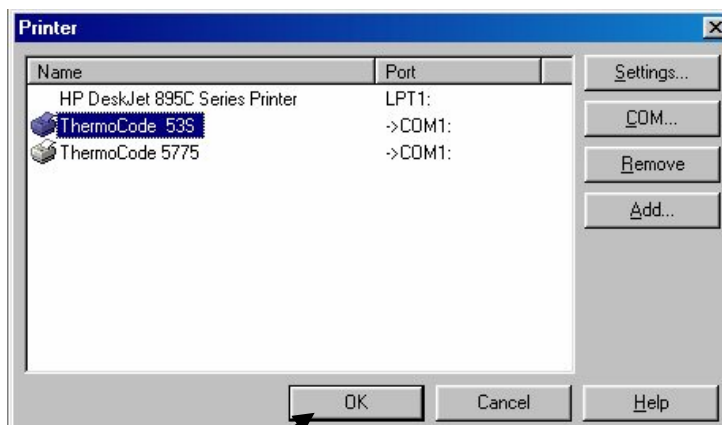
Parity = None

Stop bits = 1

Flow control = Hardware

On completion click on "OK"

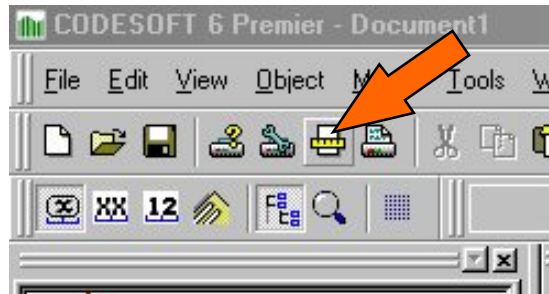
This printer dialogue box will now be seen.



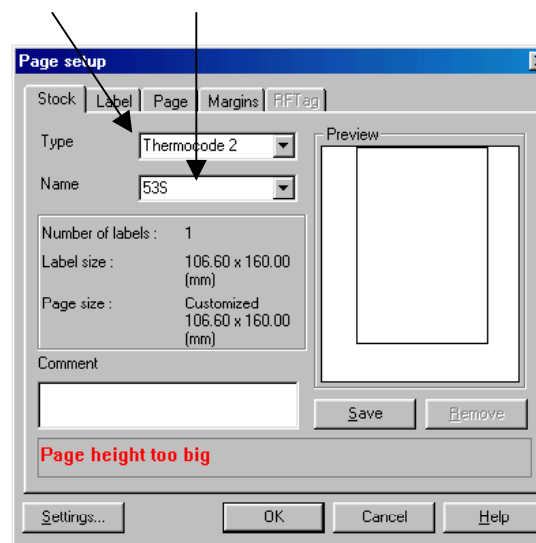
Then click on "OK"

Page Set Up

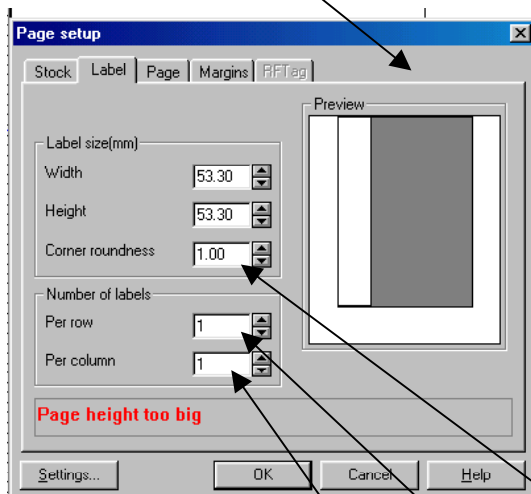
Page Set up (maximum Print area), Click on the icon displayed as a page with the Ruler.



This Dialog Box will appear. Ignore the warning message in red and label page size. Enter the Printer Type and the Model name of the Printer. Then Click on "**Label**".



This Dialog Box will appear, enter the width and height of your Print area. (see chart below)



Model	Width (mm)	Height (mm)	Max Length (mm)
53E	53.3	30.0	30.0
53C	53.3	53.3	500
53S	53.3	53.3	53.3
53M	53.3	106.6	106.6
53L	53.3	160.0	160.0
107S	106.6	53.3	53.3
107M	106.6	106.6	106.6
107L	106.6	160.0	160.0
107C	106.6	106.6	250

Set the following values:-

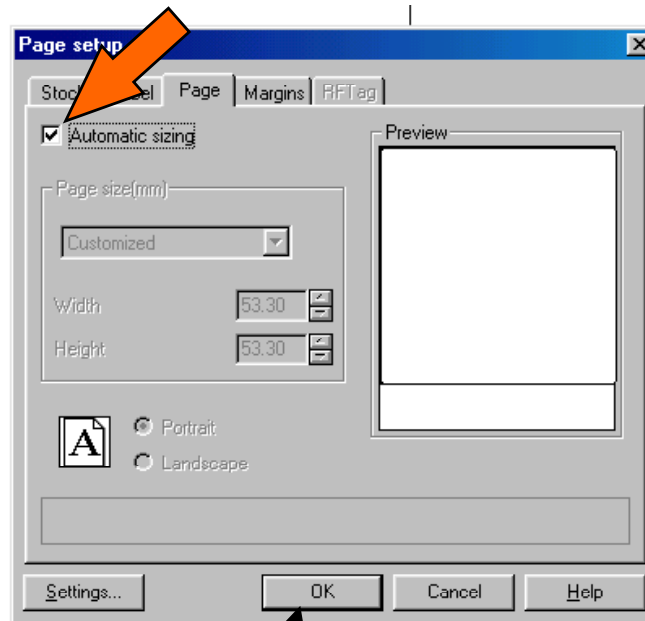
Corner roundness = 0.00

Labels Per row = 1

Labels per column = 1

Page Set Up (continued)

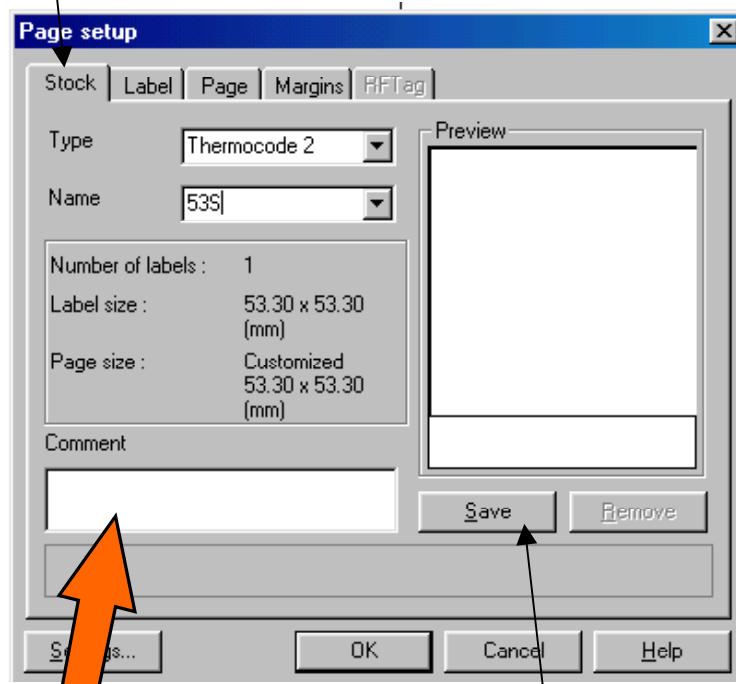
Select "Page", then ensure that "Automatic sizing" is checked.



Click on "OK" to save the page and sizes.

Alternatively you can save the label with some comments.

"Click on Stock"

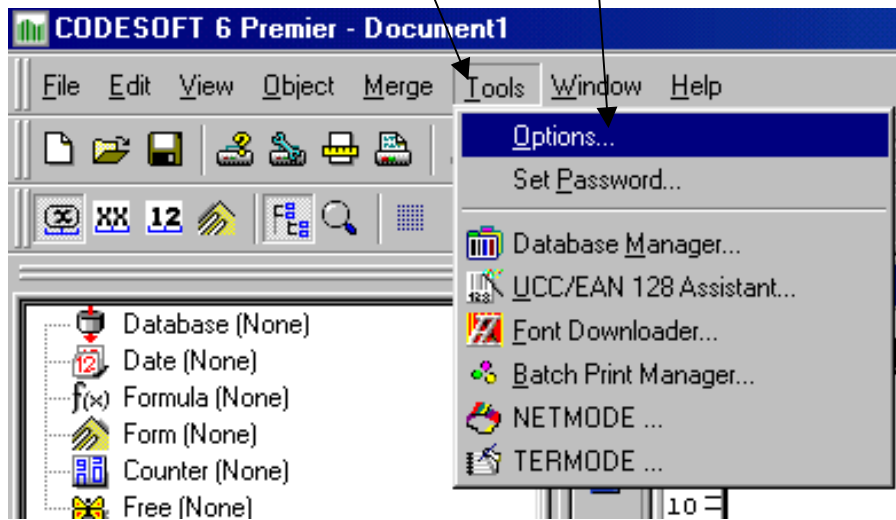


You can add Comments with in this Box if required.

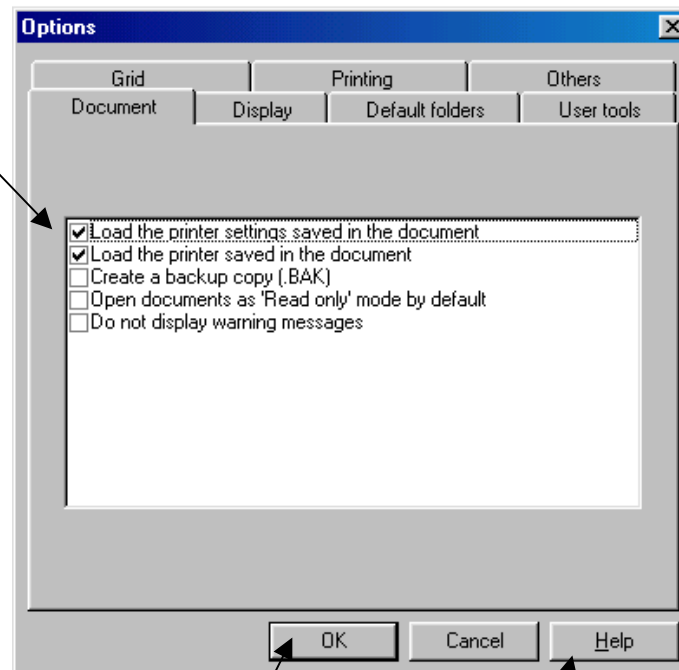
Press "Save" when finished, then press "OK"

Configuration of saved Formats (label designs)

Click on "Tools" then "Options".



Check the first two boxes shown.

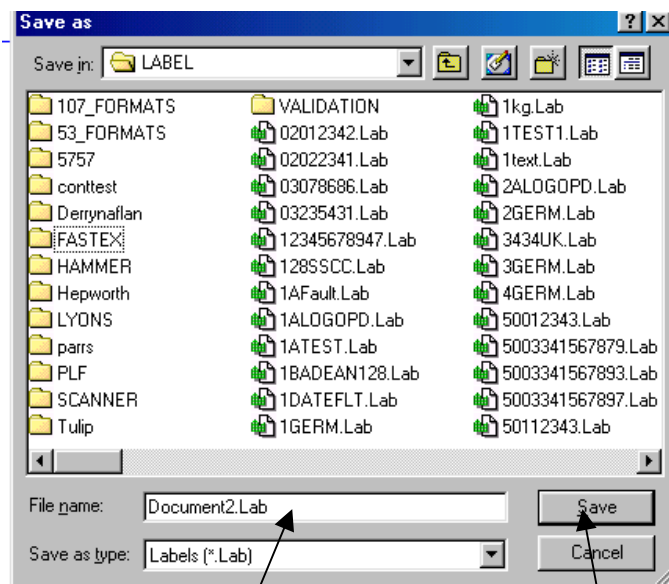
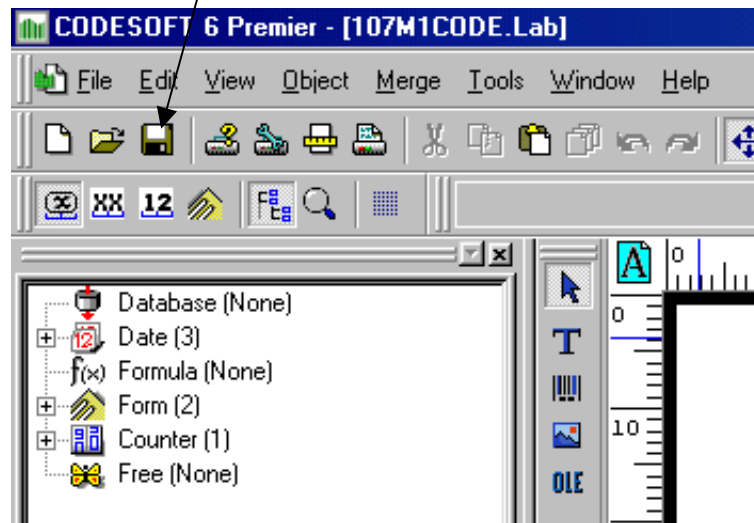


Click on "OK" to save settings.

For further information on the other check boxes and menus click on the Help

Saving a New Format (label design)

Click on the Disk Symbol to save the new format.



Enter the file name you require.

Then click on save

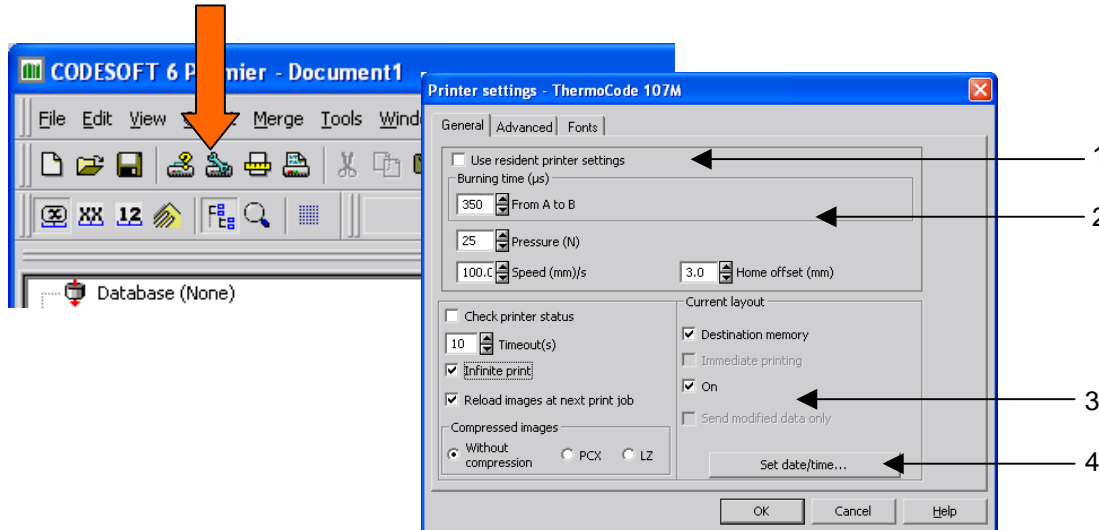
Printer Settings (General Menu)

Forward

The Printer settings are very important, ensuring that the print quality is optimised for product being printed.

Ideally you should leave the values Burn, Pressure, Speed and Home offset as the defaults that have loaded with the software. Once a test print on the substrate to be printed has been done, fine tuning can take place to suit your required application.

Click on the icon that shows the Printer with the Spanner, the printer settings dialog box is then shown.



1. **Use resident printer settings:** With this clicked on, no print parameters are sent to the Printer with the format design. The Printer will then automatically uses the default values as set up in "Supervisor" menu of the Terminal.
2. **Printer Settings:** Are the **Burn, Pressure, Speed** and **Home offset** values that will be down loaded with the format design, if the **Used resident printer settings** box has not been checked. (Normal operation)
3. **Check printer status:** With this box checked, the Printer is checked to ensure everything is **OK** before sending a format etc.

Timeout (s): The amount of time in seconds that the Printer will be checked. (Any errors will be displayed)

Reload images at print time: After down loading a Format with variables or graphics, Codesoft does not send these items again, as they are held in the Printer File store and memory of Codesoft. If an Initialisation is carried out, then sending the Format without checking this box, you will have an error message as Codesoft believes the files are already within the printer. Ticking this box will send the complete Format.

Compressed images: This allows Graphics to be compressed for high speed loading to the Printer, this mainly used when Variable Graphics are being loaded to a Printer from a Database. These Can be compressed as a: - **PCX** or **LZ**.

Infinite print: With this not ticked the printer will only print one label.

Destination memory: Sends the Format to the Printer File Store only.

Send modified data only: Updated information only, not the complete format. (after first print)

Immediate printing: Format is automatically printed as soon as it has downloaded to the Printer.

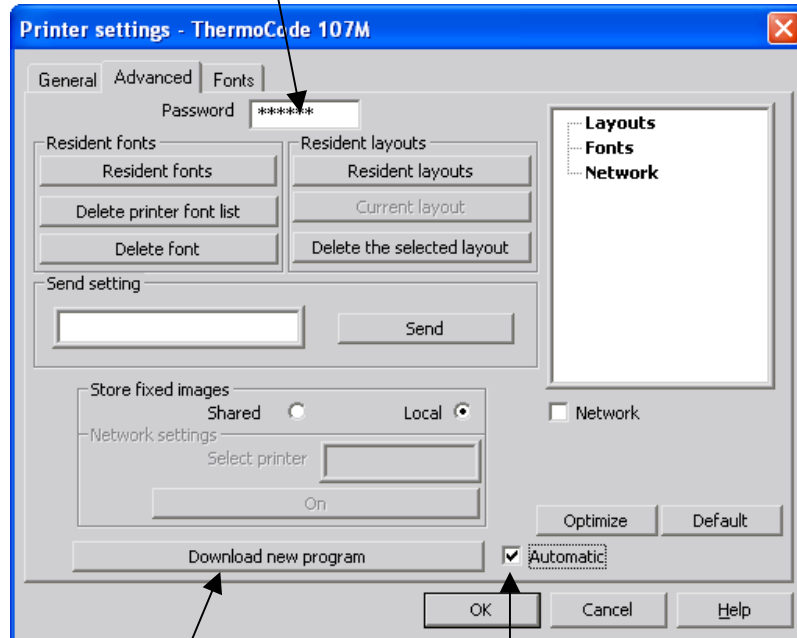
On: Send the Format to the Print Head Memory and Printer File Store.

4. **Set date/time:** Allows the user to configure the Printer Date & Time to be in synchronisation with the PC, or as the user requires.

Downloading Firmware (automatically update)

Select the "**Spanner icon**", then the "**Advanced**" of Printer settings.

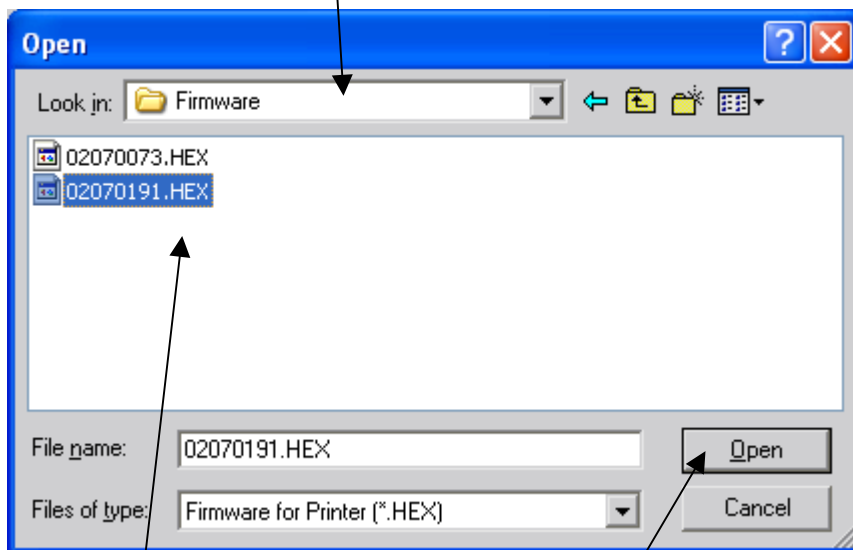
1. Enter password "**999999**" (this can be changed see page 36)



2. Automatic Checked

3. Select "Download a new program".

4. Select the directory where the *.hex files are stored. (In this case C:\Opentdate\Firmware)

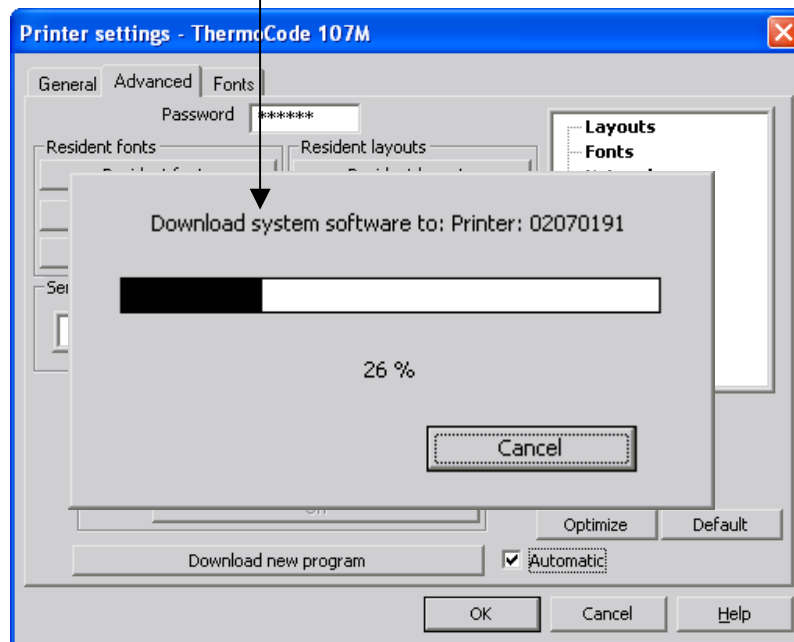


5. Highlight the file to download.

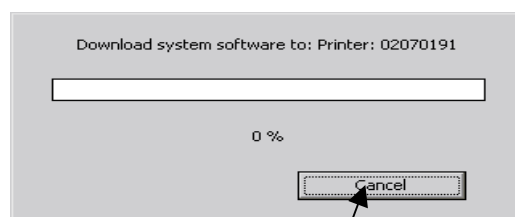
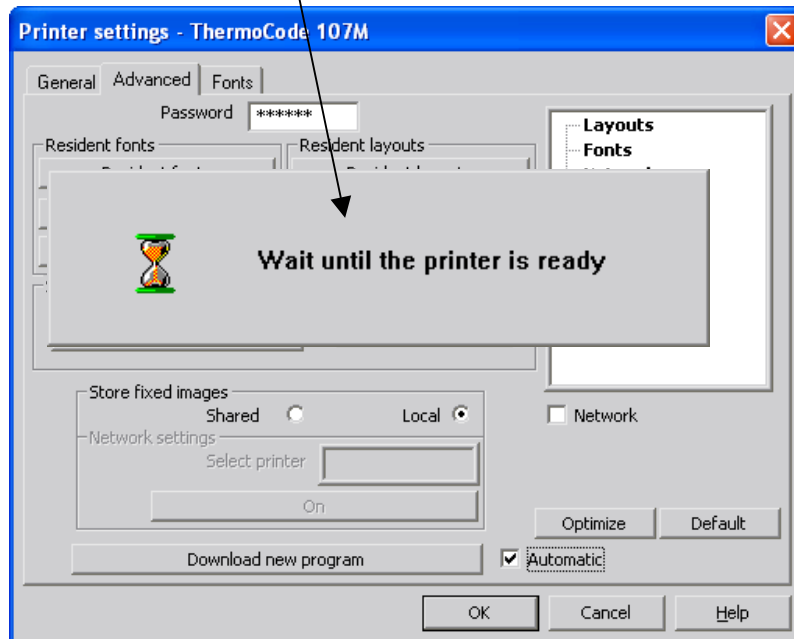
6. Then click on "Open"

Downloading Firmware (automatically update) continued.

This dialog box will appear when the Firmware has started to load.



Problems maybe experienced with "**communications**", if the printer is not switched "**on**" or not "**connected**".

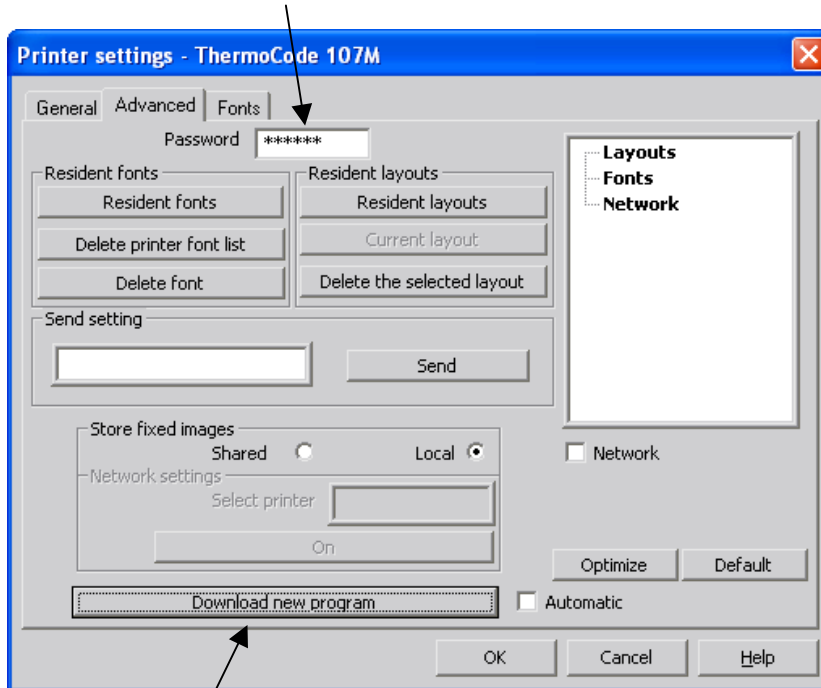


When this dialog box appears Click on **Cancel**

Downloading Firmware (manually)

Select the "**Spanner icon**", then the "**Advanced**" of Printer settings.

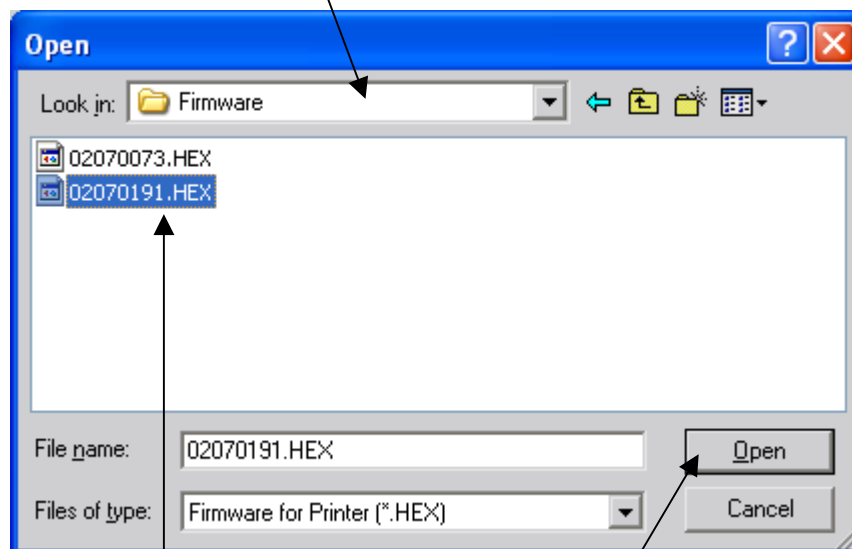
1. Enter password "**999999**" (this can be changed see page 29)



Note: - Automatic is not checked

2. Download a new program".

3. Select the directory where the *.hex files are stored. (In this case C:\Opencode\Firmware)

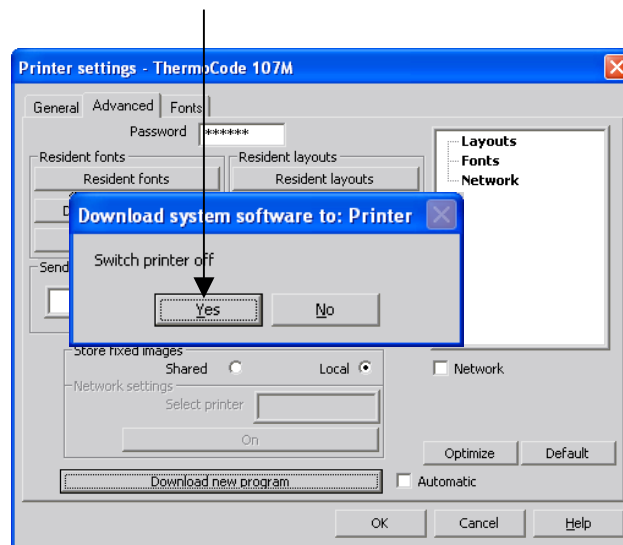


4. Highlight the file to download.

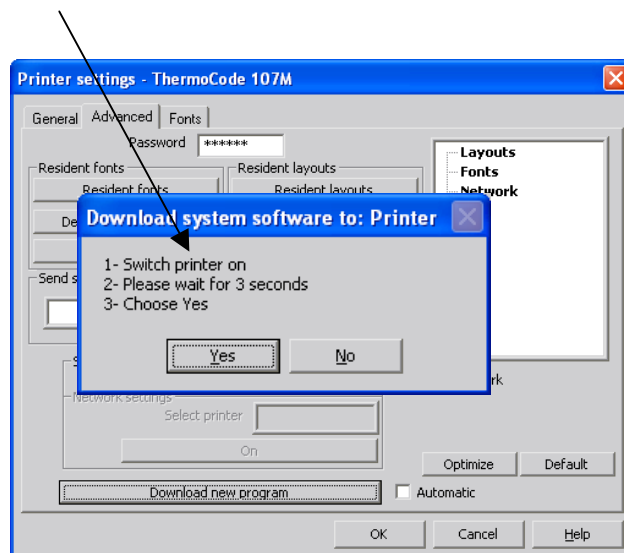
5. Then click on "Open"

Downloading Firmware (manually)

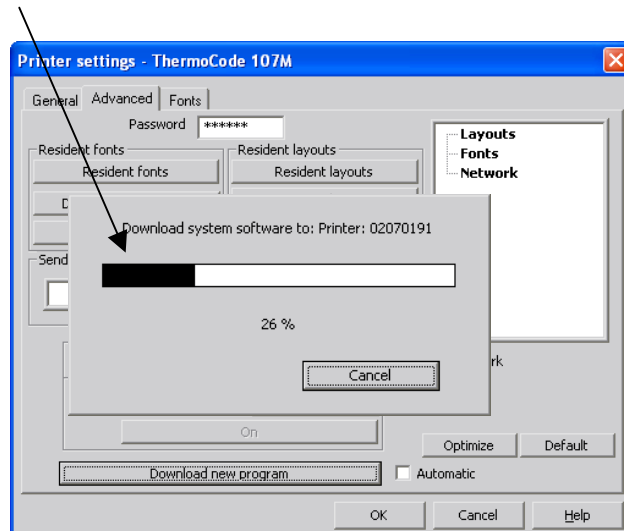
Switch the Printer off, then click on "Yes"



Follow "on screen" instructions.

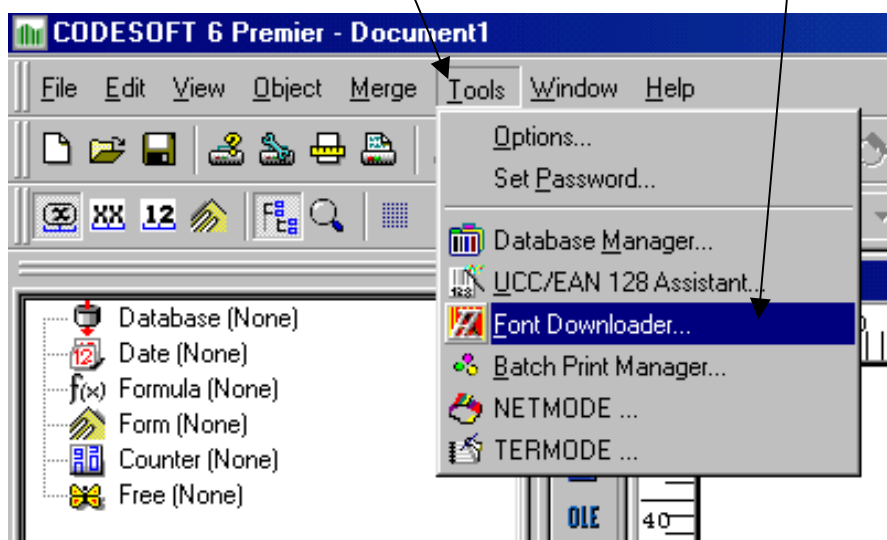


This dialog box will appear, when the Firmware has started to load

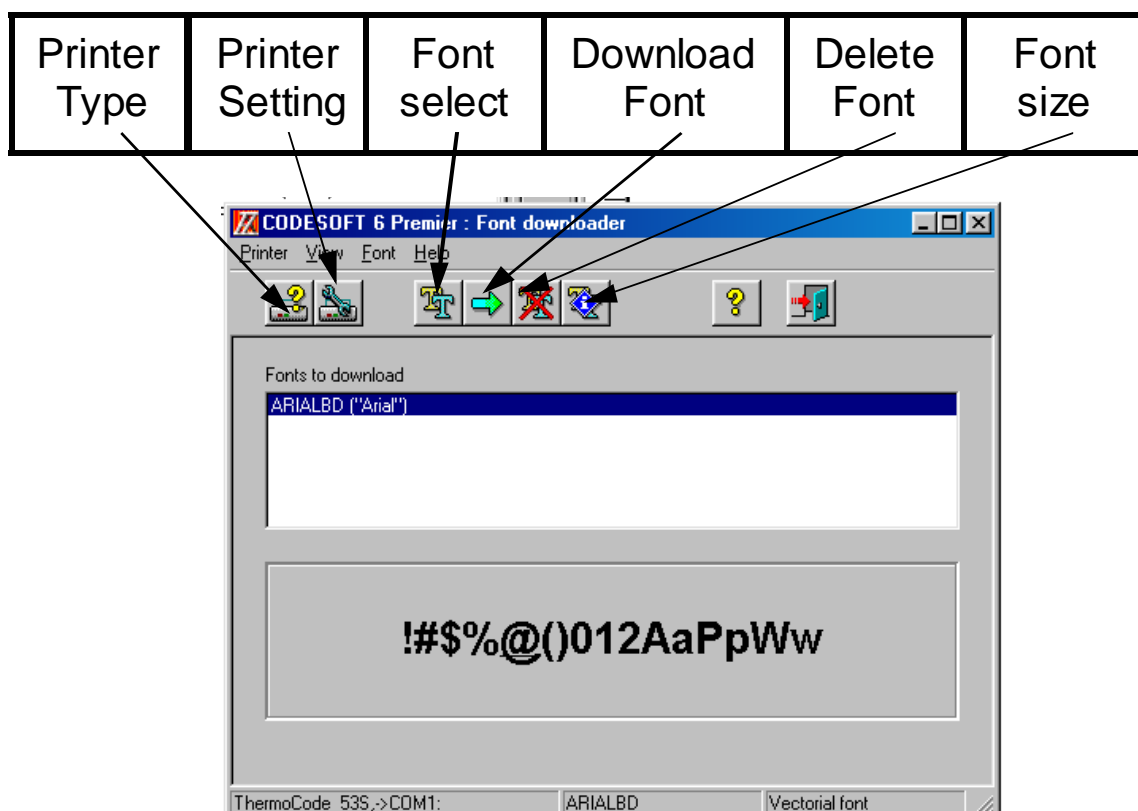


Downloading True Type Fonts (*.TTF)

Click on "Tools" and then click on "Font Downloader"

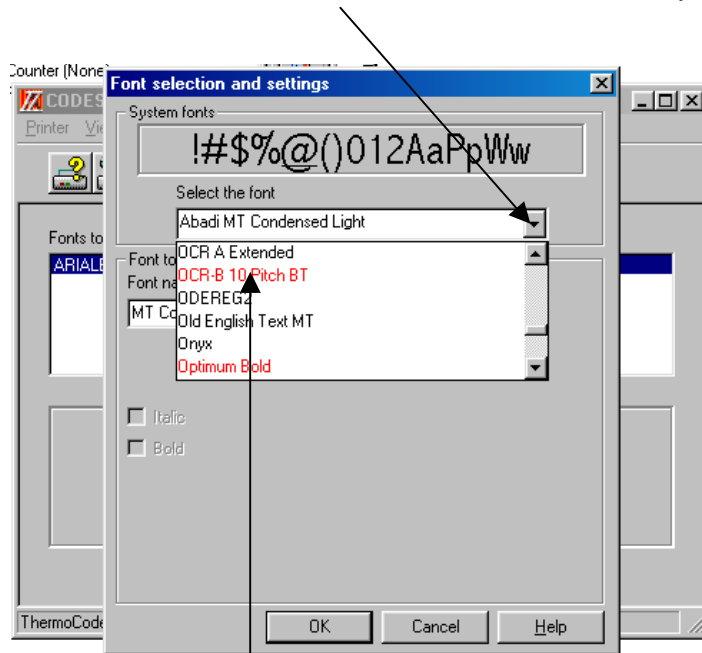


Font "Icon" Descriptions.

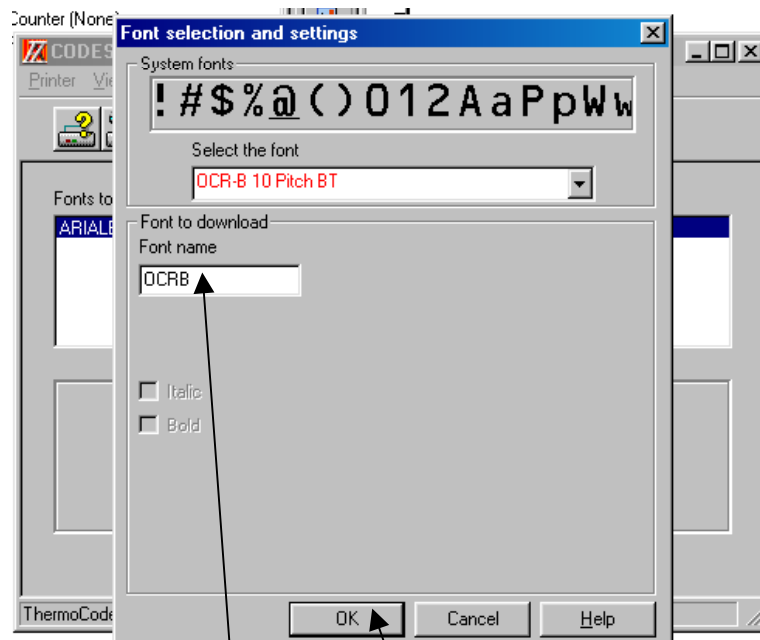


Downloading True Type Fonts (*.TTF) continued

1. Click on **"Font select"**, scroll down and search for the font you require.



2. In this case **"OCR-B 10 Pitch BT"**, click on the **"font name"**

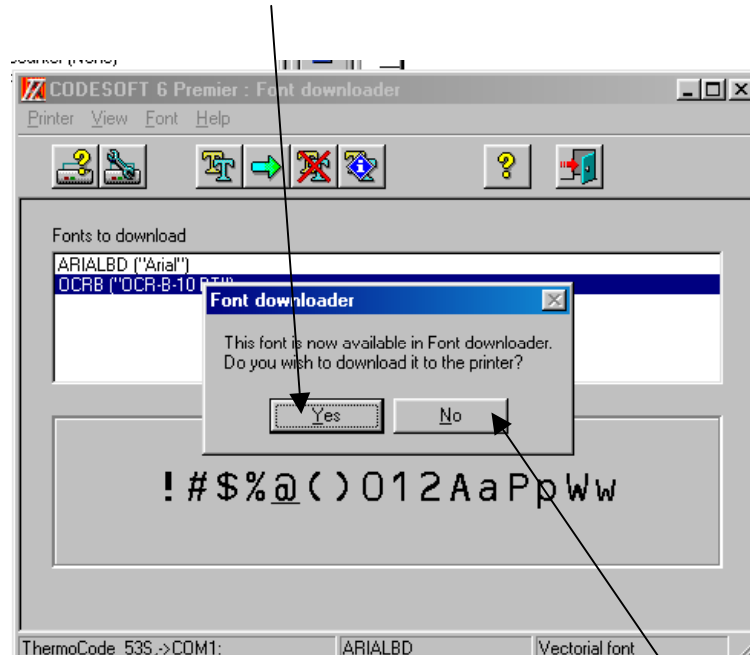


3. Edit the font name, if required.

4. Click **"OK"** when completed

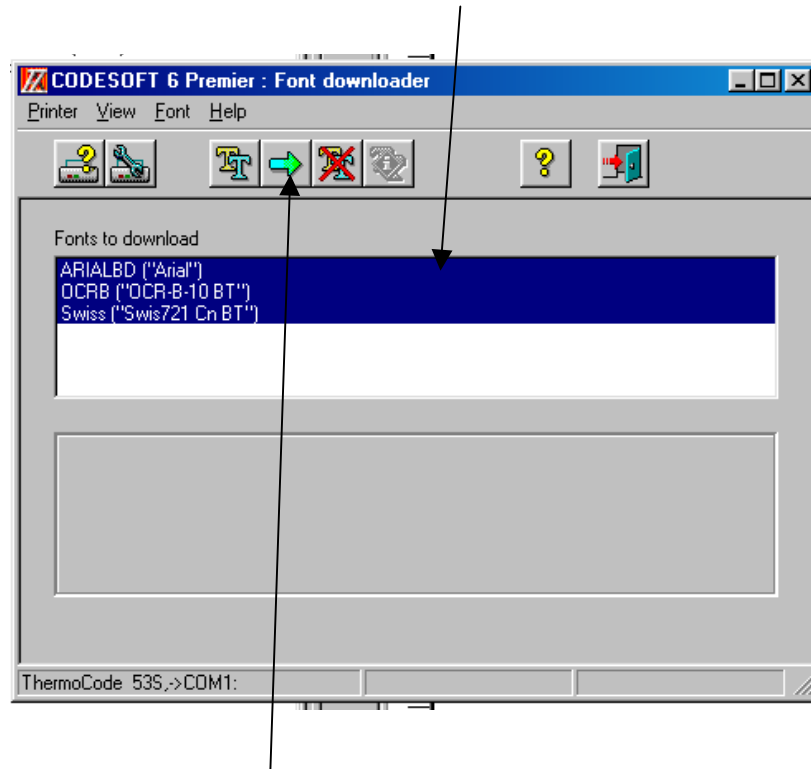
Downloading True Type Fonts (*.TTF) continued

Automatically when you select "**Yes**" the font will be downloaded to the printer.



Alternatively you may wish to load several different types of fonts, click on "**No**" and see instruction below.

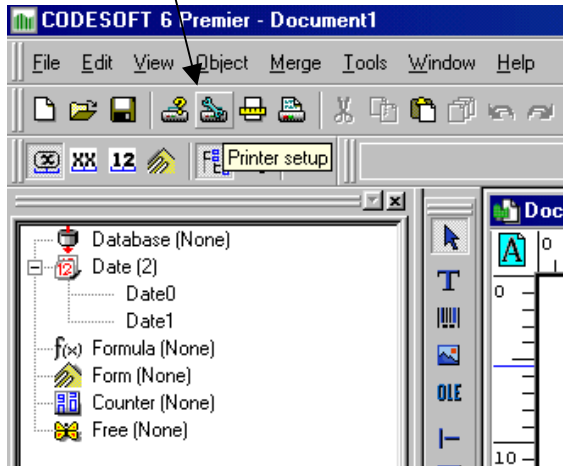
Holding the "**shift key**" and the "**down arrow**", selects all the fonts ready to load to the printer at once.



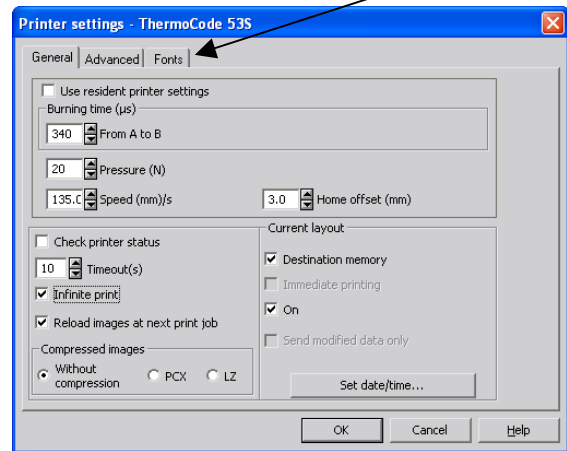
Click on the "**Download Font**" button, this will copy all selected fonts to the printer.

Downloading Bitmap Fonts (*.SFP)

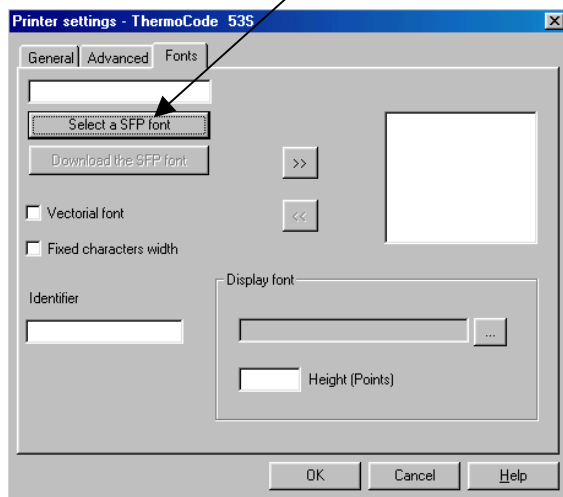
1. Click on Printer setting



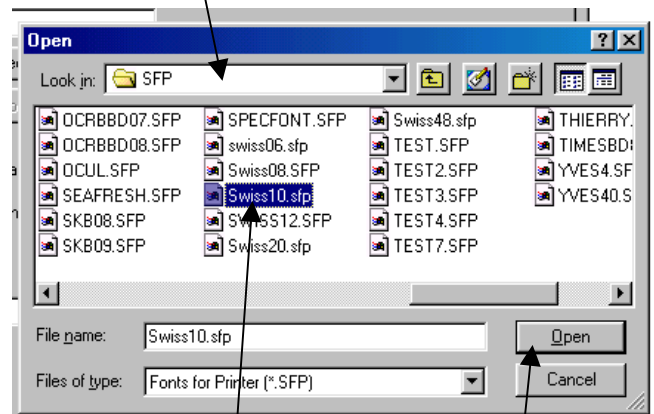
2. This Dialog Box will appear Click On Fonts



3. Click on "Select a SFP font".

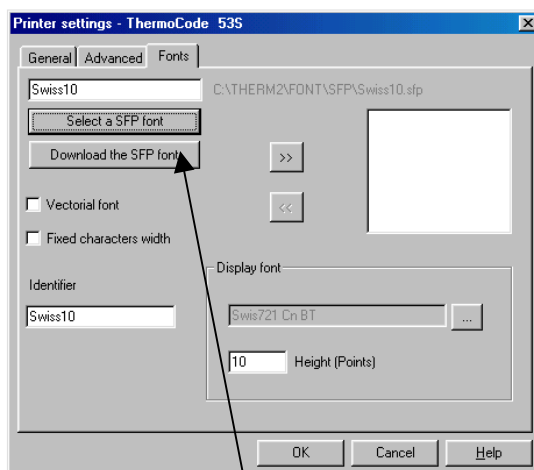


4. Select directory with "*.sfp" fonts.

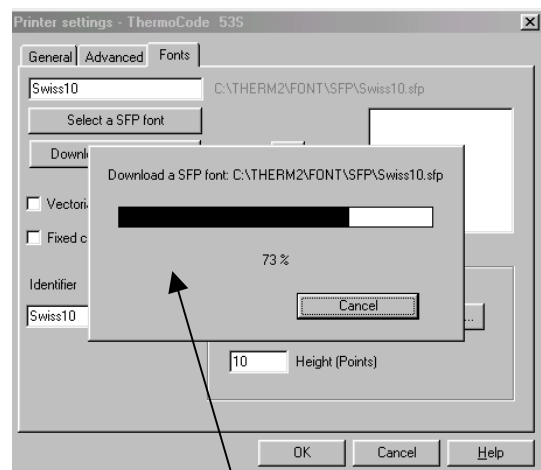


5. "Highlight" the font you wish to use.

6. Then click on "Open"



7. Click on "Download the SFP font" to load to the Printer.

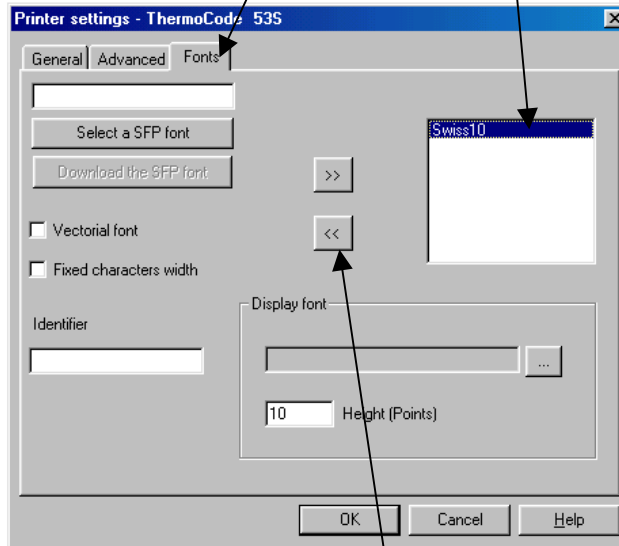


8. Showing the download window.

Simulating True Type for Bitmap Fonts

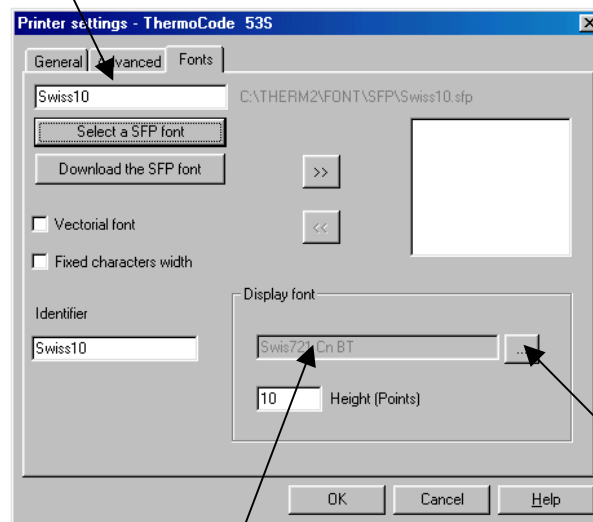
1. From the "**Spanner Icon**", printer settings select the "**Fonts**" menu.

2. "**Highlight**" the font to be simulated.



3. Click on the "**Left Arrow**".

4. The "**font name**" is now imported to the to the "**Select a SFP font**" box as shown below.



5. This displays the "**Truetype Font**" being used for simulation.

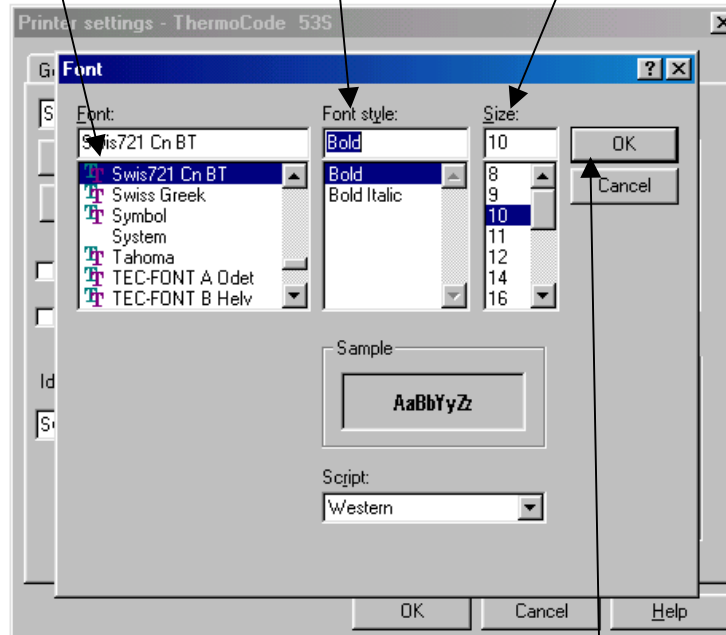
6. To change the font style, click on the "**button**" indicated.

Simulating True Type for Bitmap Fonts (continued)

1. Select "**Font**" name required for simulation.

2. Select "**Font Style**" required for simulation.

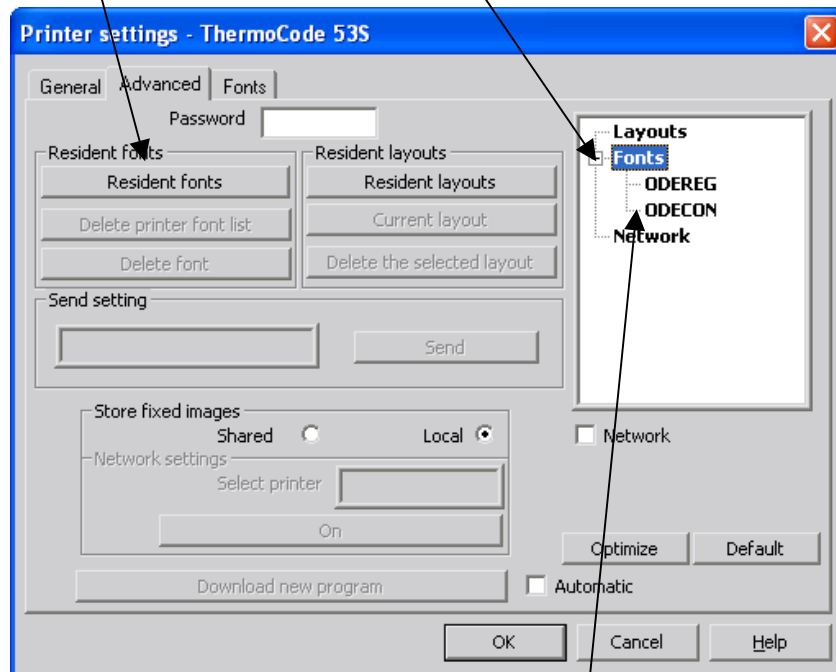
3. Select "**Size**" for required simulation.



4. Click on "**OK**" to save the font simulation

Checking Font Installation

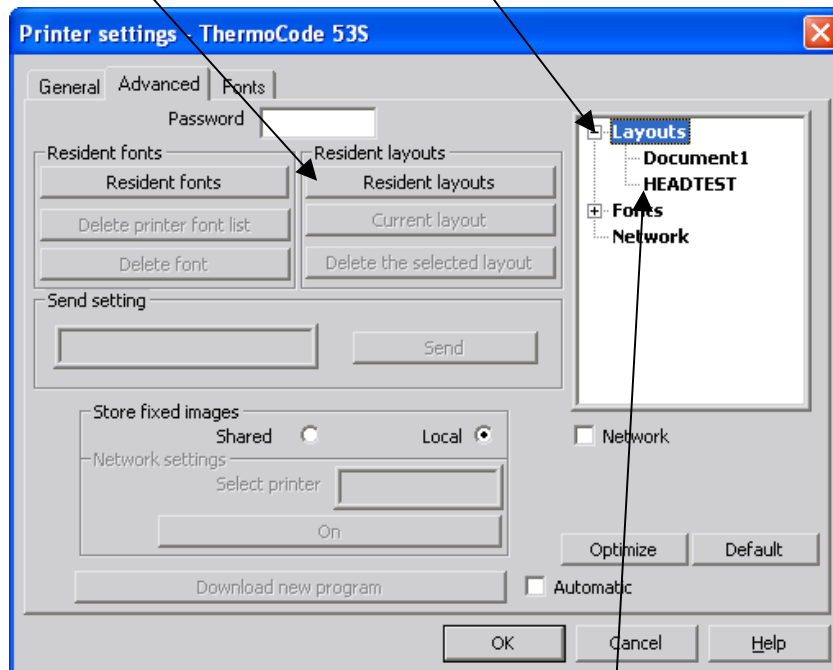
1. From the "**Spanner Icon**", printer settings, select the "**Advanced**" menu.
2. Select "**Resident fonts**"
3. Select the "+" next to Fonts.



3. Displays "**all Fonts**" loaded to the Printer.

Checking Format Installation

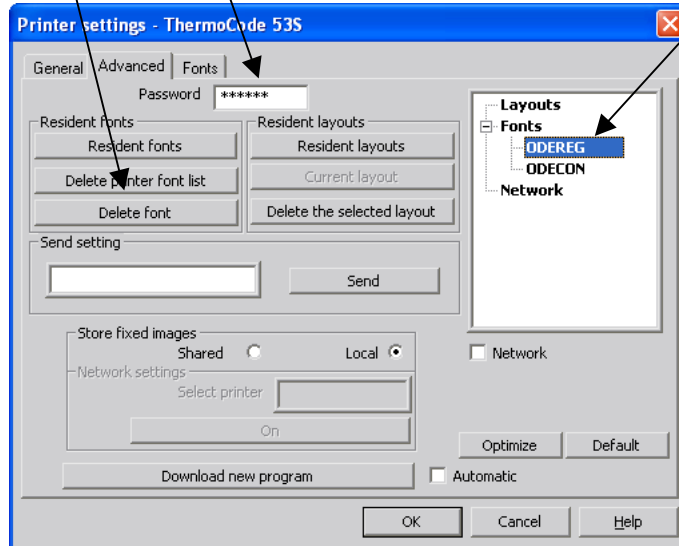
1. Select "**Resident layouts**"
2. Select the "+" next to Layouts.



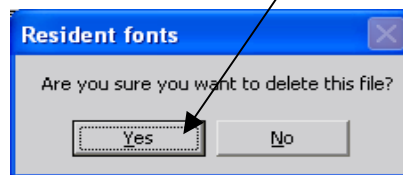
3. Displays "**all Formats**" loaded to the Printer

Deleting a Printer Font

1. From the **"Spanner Icon"**, printer settings, select the **"Advanced"** menu.
2. Enter the required password
3. Highlight the font to be deleted.
4. Click on **"Delete font"**

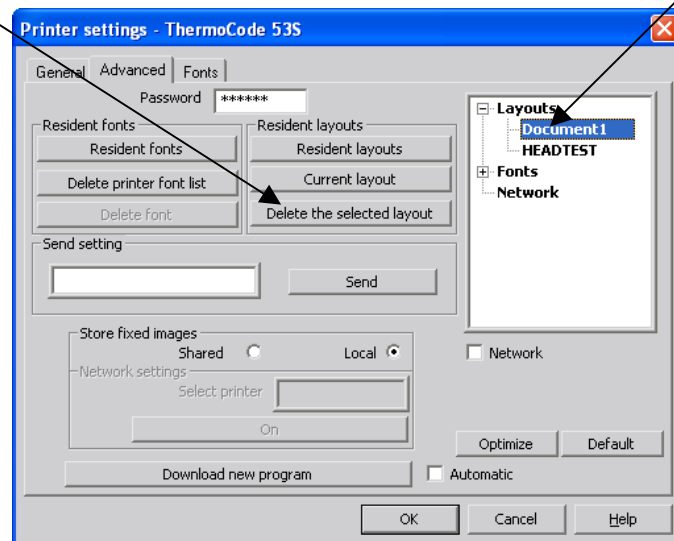


This Dialog box appears click on **"Yes"** to delete the font

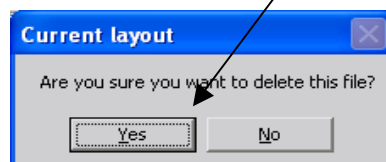


Deleting a Printer Layout (Format)

5. Highlight the format to be deleted.
6. Click on **"Delete the selected layout"**

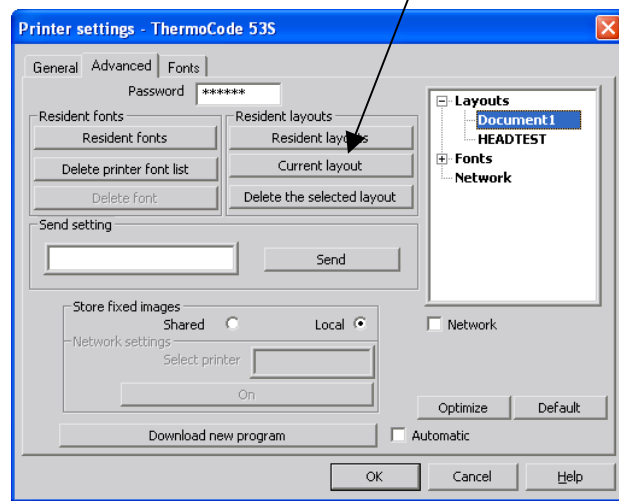


This Dialog box appears click on **"Yes"** to delete the selected layout.



Other Printer Settings

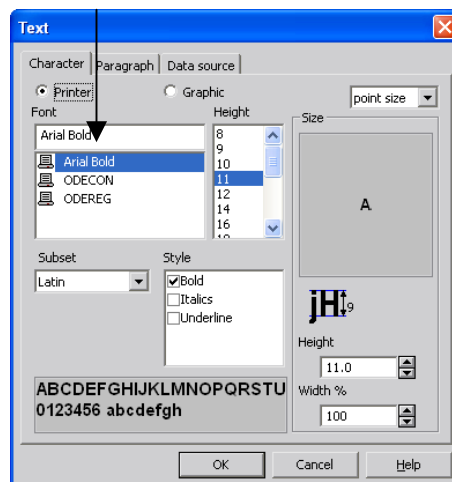
Highlighting a layout then clicking on "Current layout"



This selects the format from the Printer storage memory, to the Printer image memory ready for printing.

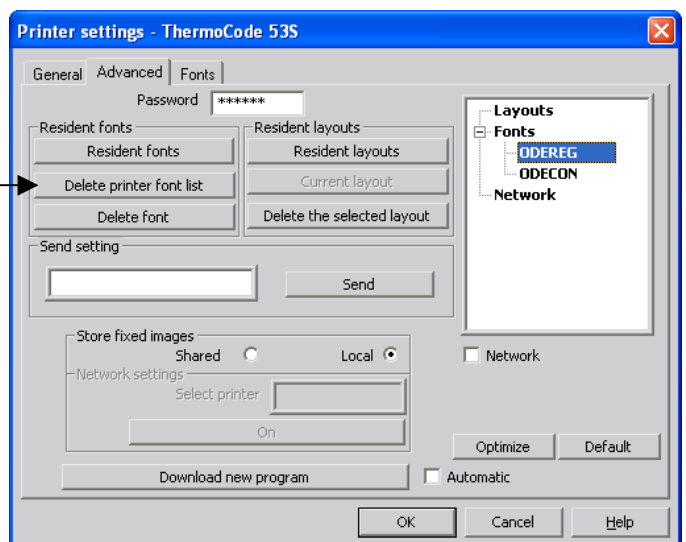
Deleting the Printer Font List (within Codesoft 6)

Printer Fonts, listed within Codesoft.



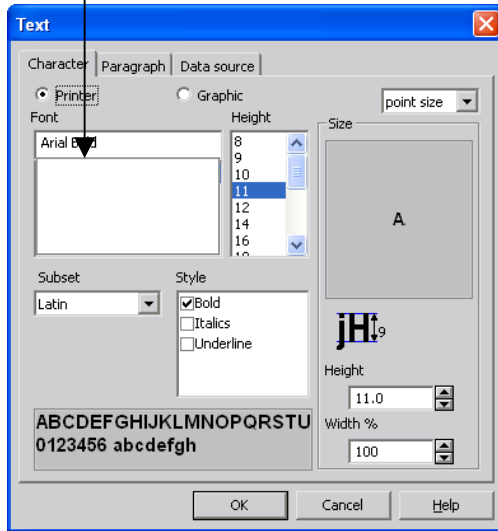
See Page 25. Selecting a printer font

Click on Delete the printer font list

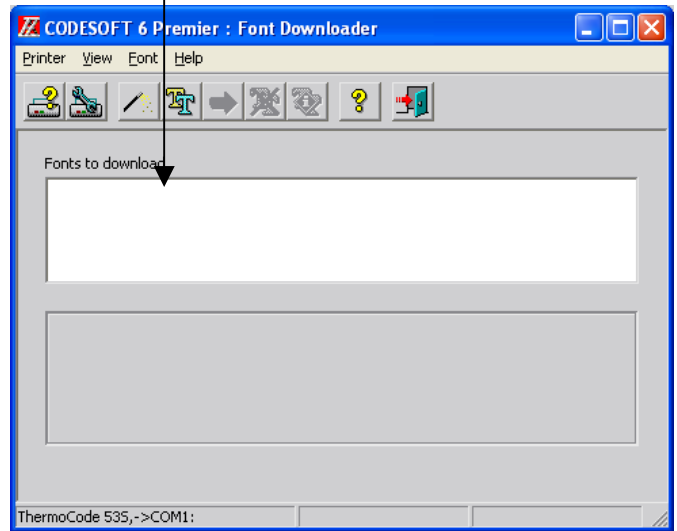


Deleting the Printer Font List (Continued)

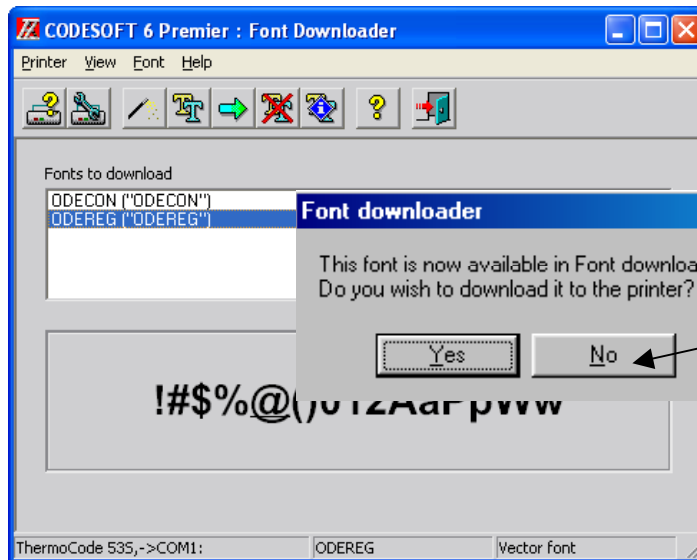
Printer Fonts now deleted, within Codesoft



This also Deletes the fonts used within Codesoft.
"Font Downloader"



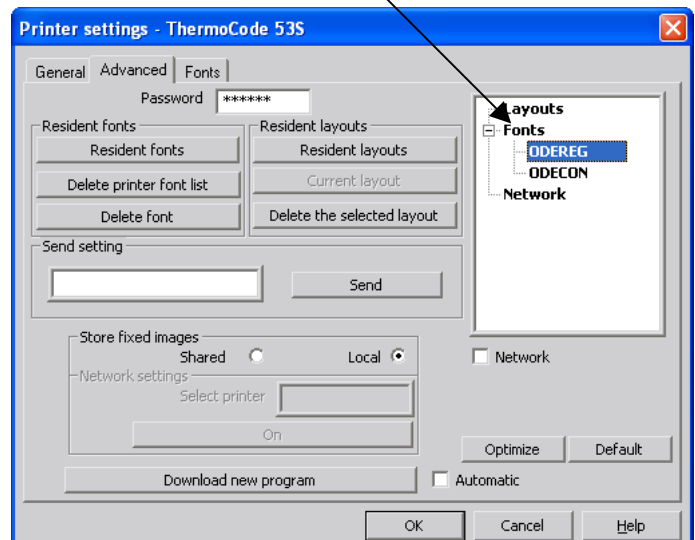
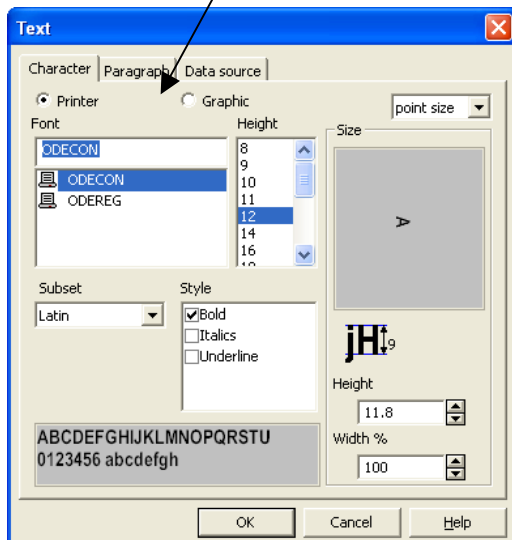
You would now have, to reselect the fonts into the "Font Downloader" required for the printer images.



When this dialog box appears
Click on No

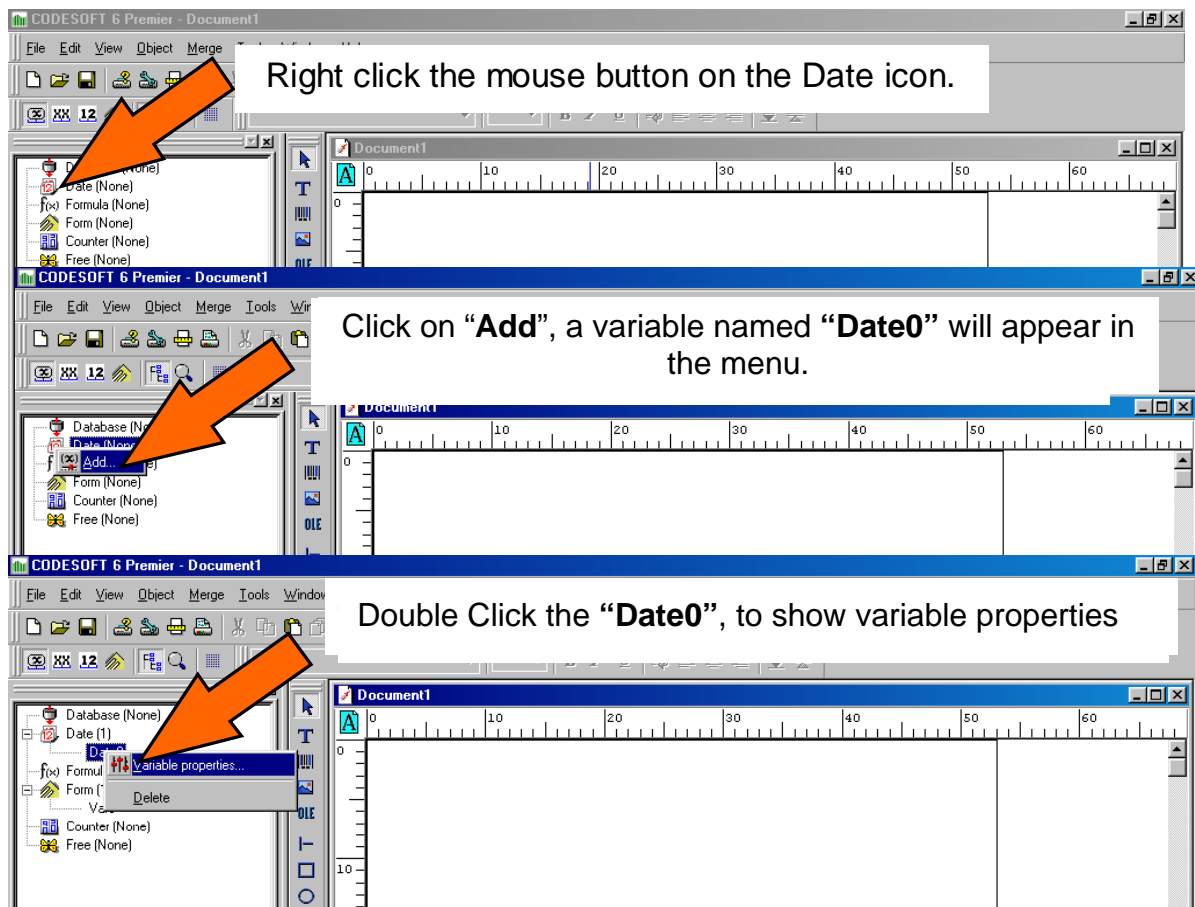
After selecting the required fonts you don't have to send them to the Printer, if they have all ready been installed.

The new Printer Fonts, list within Codesoft, are now matching the actual fonts within the Printer.



Creating Automatic Date & Time fields

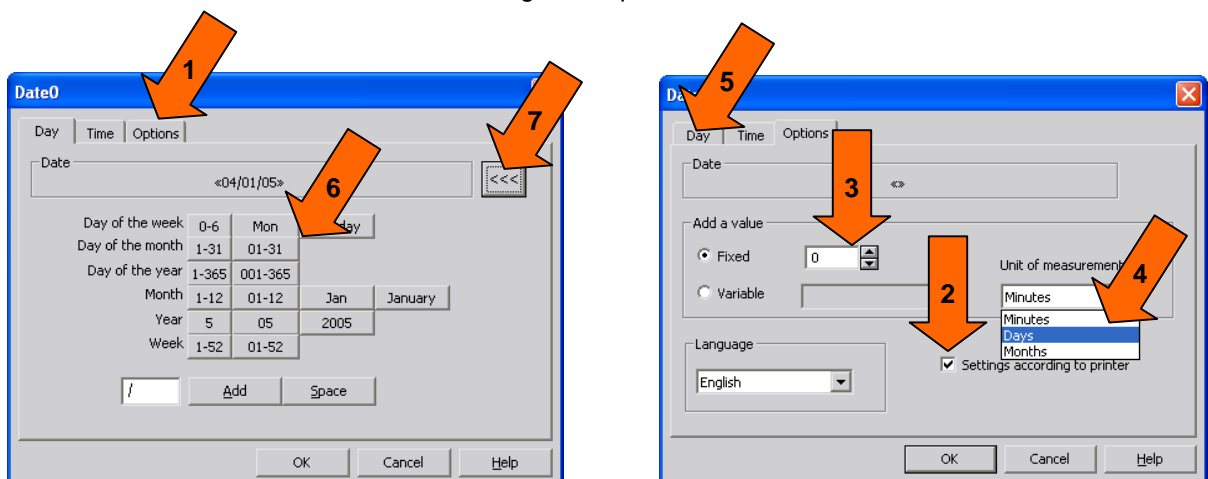
Automatic date fields, are text fields that will be automatically updated by the Printer. Typically a "**Best Before**" date could have an automatic offset of 5 days. At midnight the date will automatically advance by 1 day, ensuring the customer always has a 5 day offset in the date.



Follow the numbered instructions below, referring to the "Arrow numbers".

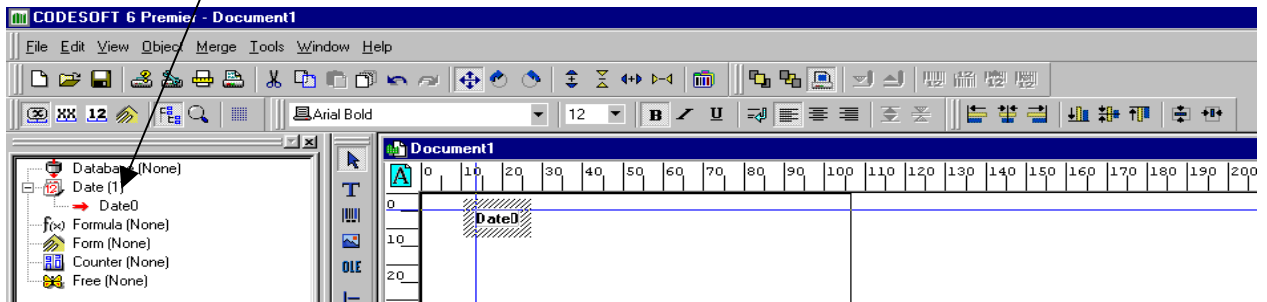
1. Click on "**Options**", opens up the options dialogue box.
2. Check the box "**Settings according to Printer**"
3. Check the box "**Fixed**". Enter an offset if required. (A numeric value of 5 = 5 minutes, days or months)
4. If an offset is required, choose which "**unit**" of offset is required. (Minutes, Days or Months)
5. Select "**Day**" function within the options dialogue box, if a day offset is required.
6. Select & compile the date field required from the available fields shown on the screen
7. Use this button to delete fields whilst editing.

Select "**OK**" when finished creating the required date or time field.

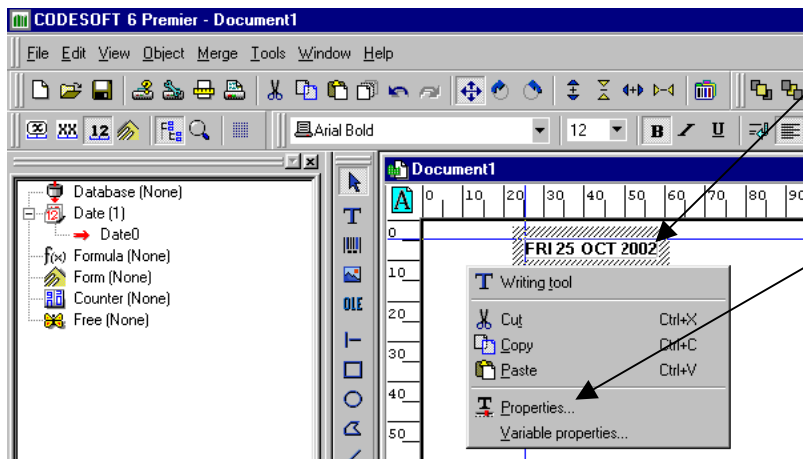
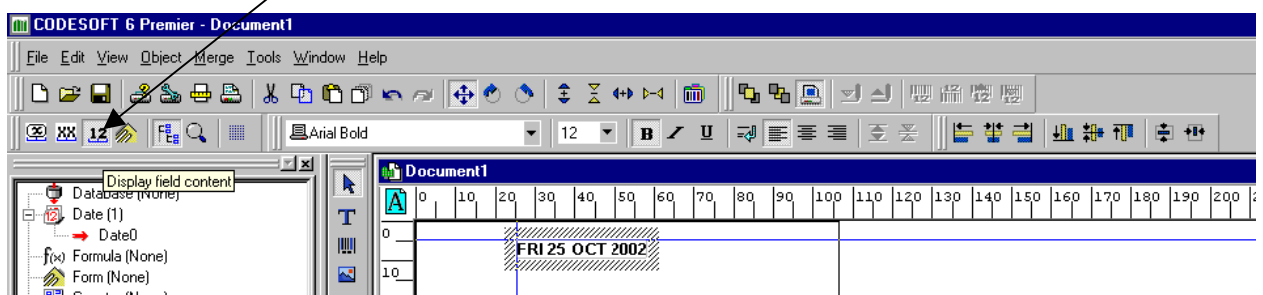


Creating Automatic Date & Time fields (continued)

Click and hold on "Date0", then drag and drop on the page. Ensure text display is selected.



Clicking on the "12 icon" will Display field contents.

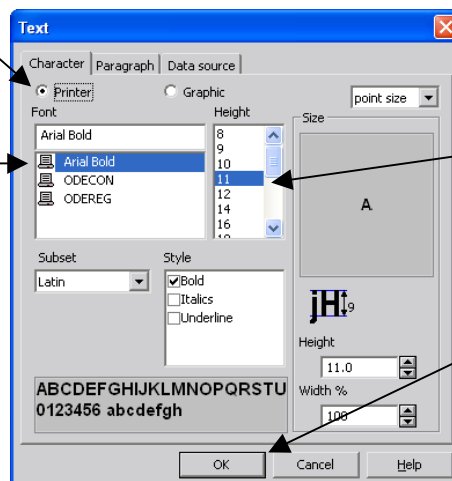


Left Click the "Date0" to highlight itself, then Right click to show this menu.

Left click on Properties, this allows you to change the font properties.

All Variable Fields Must Use a Printer Resident Font

1. Select the required font



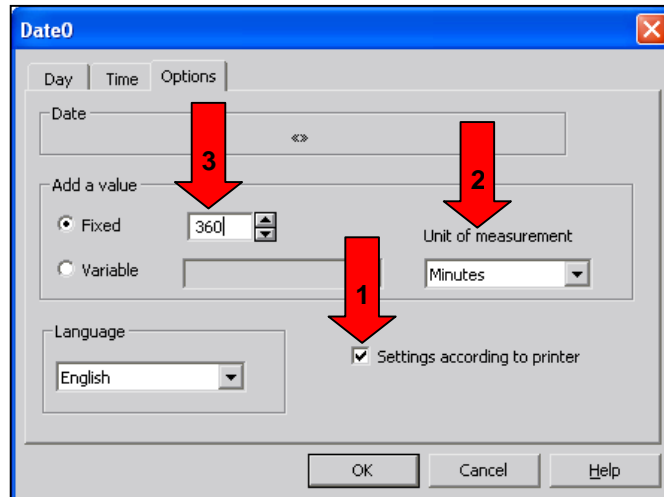
2. Select the point size

3. Click on OK

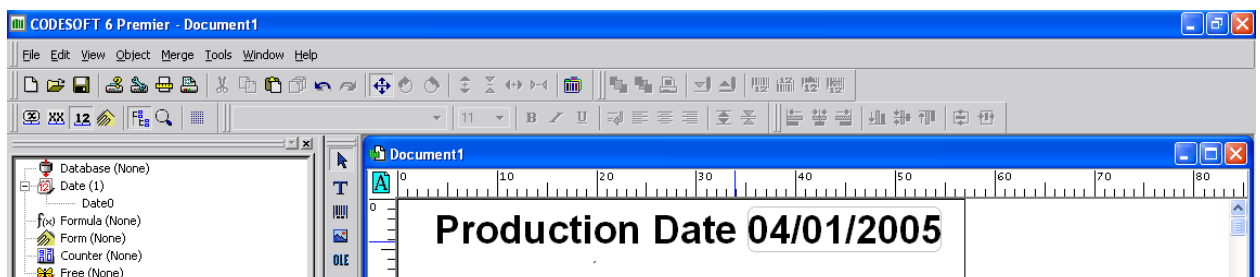
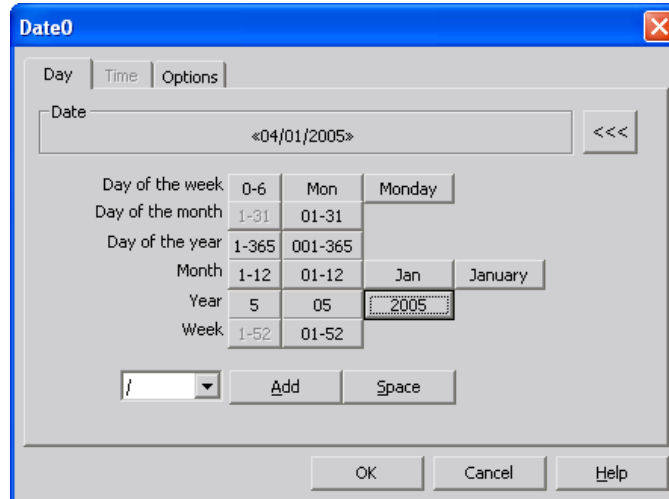
Date Field rollovers before and after Midnight (Example)

Date Field to rollover at 6am the following Day

1. Check the Box "Settings according to printer"
2. Select the "Unit of measurement" is Minutes
3. "Add a value" enter the rollover time in Minutes.
360 = 6am the following morning. (Time from midnight)



Enter the required date field then Click on "OK"

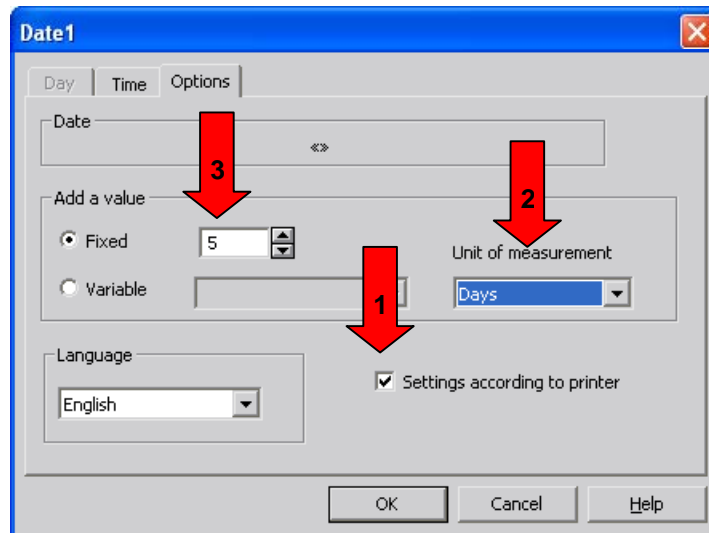


Production Date will rollover at 6am on the 05/01/2005

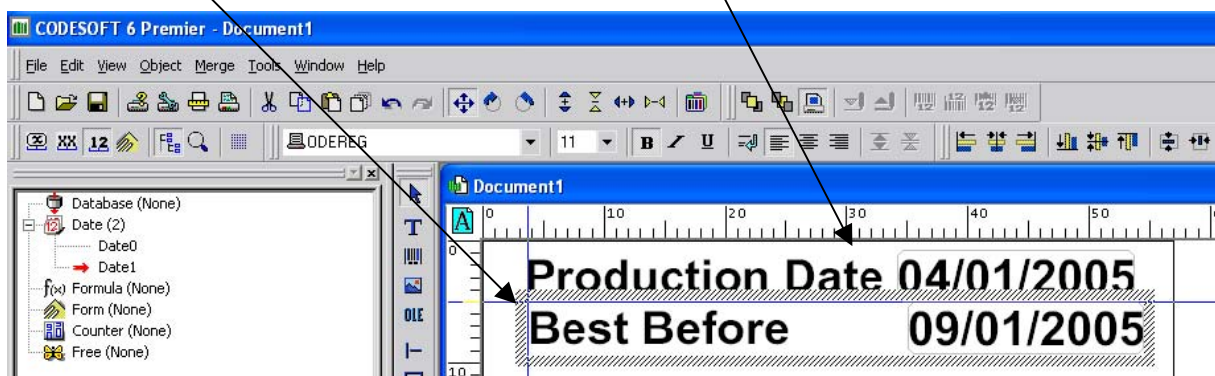
Date Field rollovers before and after Midnight (Continued)

Adding another date field with a 5 day offset (Date1)

1. Check the Box "Settings according to printer"
2. Select the "**Unit of measurement**" in Days
3. "**Add a value**" enter the rollover of 5 = 5 Days.



Production Date will rollover at 6am on the 05/01/2005
Best Before, will rollover at midnight to 10/01/2005



Date Field rollovers before and after Midnight (continued)

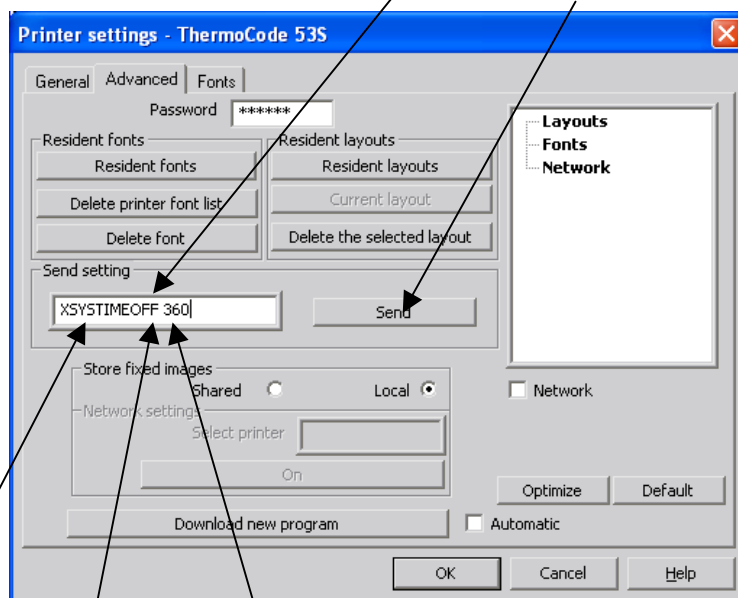
When changing SYSTIMEOFF this will affect every format with a real time date. And will change over at the time you have set, be it two hours before midnight or 6 hours after midnight.

Select the "**Spanner icon**", then the "**Advanced**" of Printer settings.

Enter password "**999999**" (this can be changed, see page 39)

Enter the System Variable Name "**XSYSTIMEOFF 360**" or the required offset in minutes.

Click on **Send**



"Uppercase text" "Space" "3 Numeric characters for plus values", minus values = -120)

Codesoft: - XSYSTIMEOFF 360

Rolls over at 6am the following day. (Maximum plus value **+720**)

Codesoft: - XSYSTIMEOFF -120

Rolls over at 2200 the same day. (Maximum minus value **-720**)

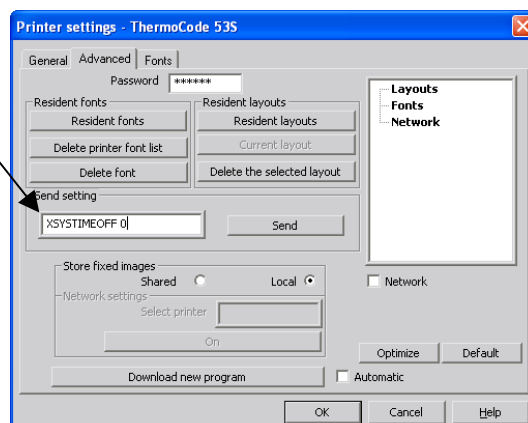
All Printer System & Mechanical Variables can be sent from this dialog box to the printer "**Send setting**"

Before changing any System & Mechanical Variables you are strongly advised to contact your Supplier before making any other changes.

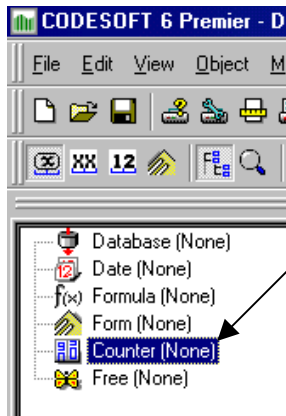
NOTE! "Sending the wrong typed information to the printer will cause errors"

Error number: - 26 Sys pram unknown. (Possible missed typed system variable.)
84 Sys pram out of range. (Incorrect value sent to the printer.)

XSYSTIMEOFF 0 resets the printer to the original setting with out any time offset.



Creating a Variable Counter Fields

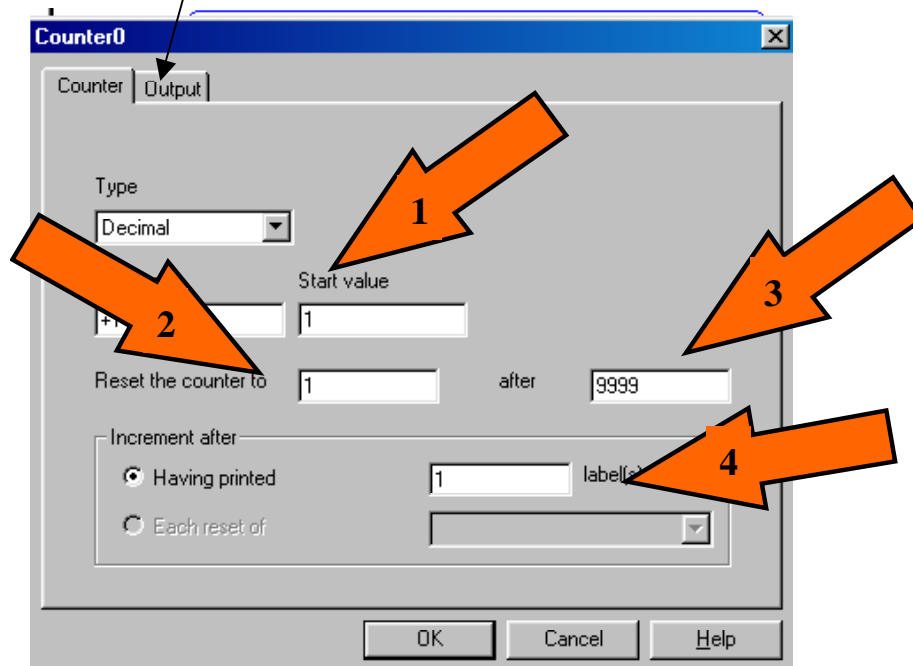


Variable Counter Fields are created initially in the same way as Date Fields.

1. Right click the mouse button on the "**Counter icon**".
2. Click on "Add", a variable named "**Counter0**" will appear in the menu.
3. Double click on "**Counter0**". The Counter Variable will appear, shown below.

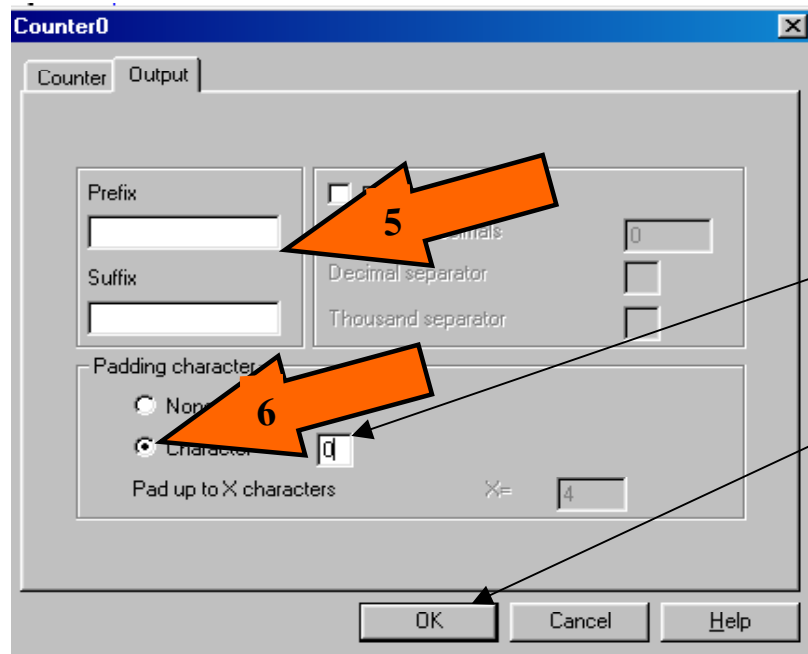
Follow the numbered instructions below, referring to the "**Arrow numbers**".

1. "**Start value**", click on box, edit and then specify the print value required.
2. "**Reset the counter to**", click on box, and then specify the minimum value required. "**Set to 1**"
3. "**after**", click on box, edit and then specify the maximum value required. Enter "**999999**".
4. "**label(s)**", click on box, edit then specify how many of the same labels required. "**Set to 1**"
5. Select "**Output**" to see the first menu on next page.



Creating a Variable Counter Fields (continued)

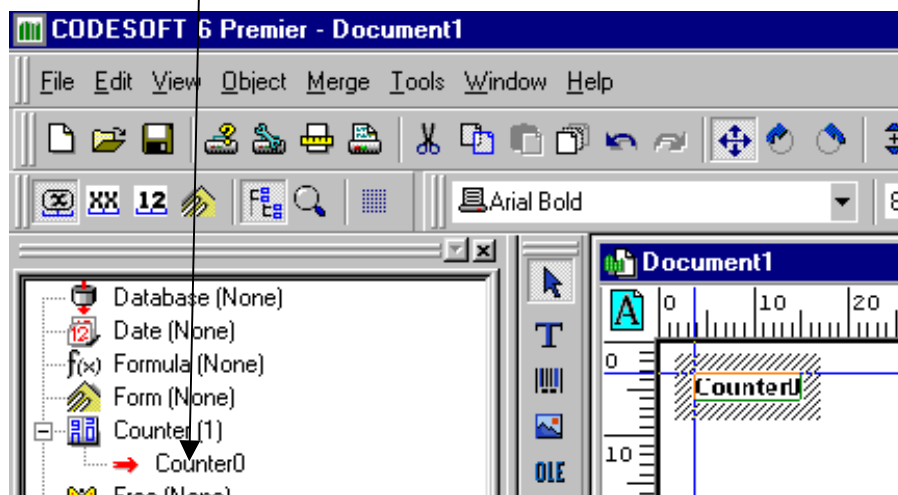
5. You can add a "**Prefix**" or "**Suffix**" to a counter field, this will become fixed text.
6. Clicking on "**Character**" allows you enter a padding character. Adding a "**0**" and to a counter field would print:- **000001** instead of **1**



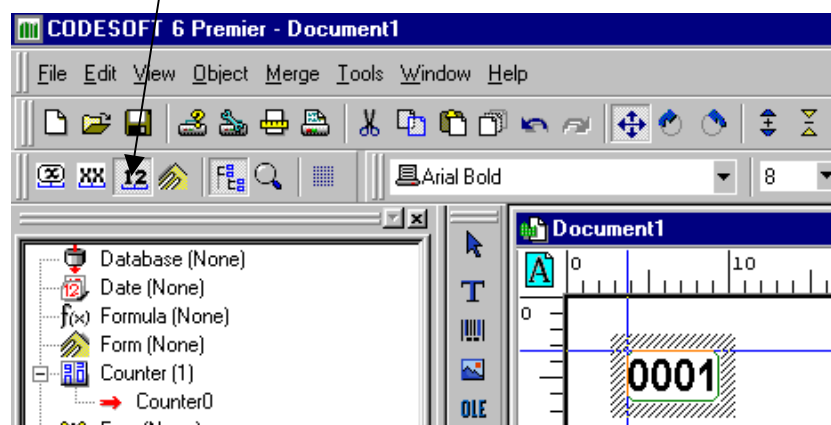
7. Enter a "0" in the box

8. Press "OK" to save.

Click and hold on "**Counter0**", then drag and drop on the page. Ensure text display is selected.



Clicking on the "**12 icon**" will Display field contents.

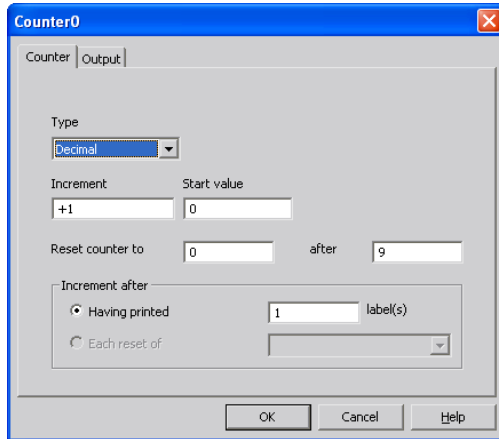


Creating a Variable Counter Fields (continued)

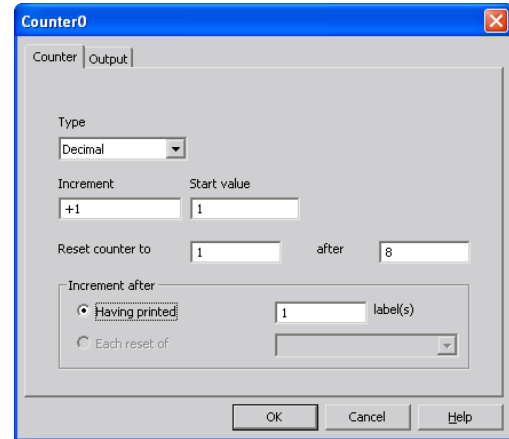
Counter Fields 0 to 9 and 1 to 9 (Below 10)

Counter fields are Incremented from 0 "Zero".

The count field Normal 0 to 9 then 10 to 19 etc.



Zero to Nine prints, 0,1,2,3,4,5,6,7,8,9
Then rolls over to 0
0 to 9 = 10 digits



One to Eight prints, 1,2,3,4,5,6,7,8,9. Rolls over to 1
because the 0 "Zero" is not being printed
0 to 8 = 9 digits, transposed as 1,2,3,4,5,6,7,8,9
As the start value is 1 and not 0.

Any Count above 10 works normally

Stopping "Printer" Counter Variables displaying before printing

(Any counter that is printed directly as a printer font) not graphically.

These instructions will stop the "**Counter Variables**" displaying when going to print.

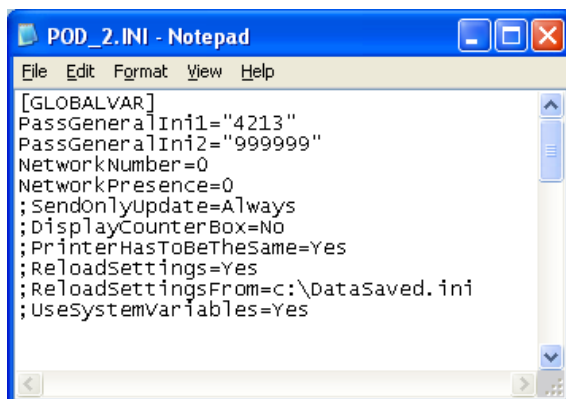
Especially if you are programs like "**Sentinel**" etc. The "**Counter Variables**" can now only be changed, by editing the "Counter Variable Properties" within the format directly.

After installing the new driver (version 11.10.17) to your normal Codesoft directory.

example: (C:\Program files\Cs6Prem)

From the "**Explorer program**" find the "**POD_2.INI**" within the Codesoft directory (Cs6Prem) directory, and "**double click**" with the mouse. The file then automatically opens
With "**Notepad program**" ready for editing. (shown below)

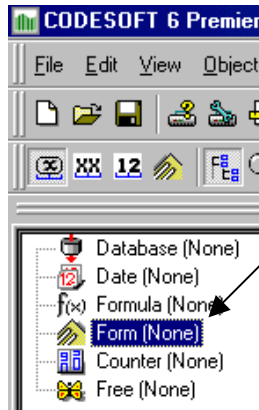
You can now change or edit the file as required:-



1. Change the line = ;**DisplayCounterBox=No**
2. Remove the semi-colon in front of the text = **DisplayCounterBox=No**
3. Click on "**File**", Click on "**Save**".
4. Then "**exit**" from the program.

See page 38 for other information on the POD_2.INI

Creating a Variable Text Fields

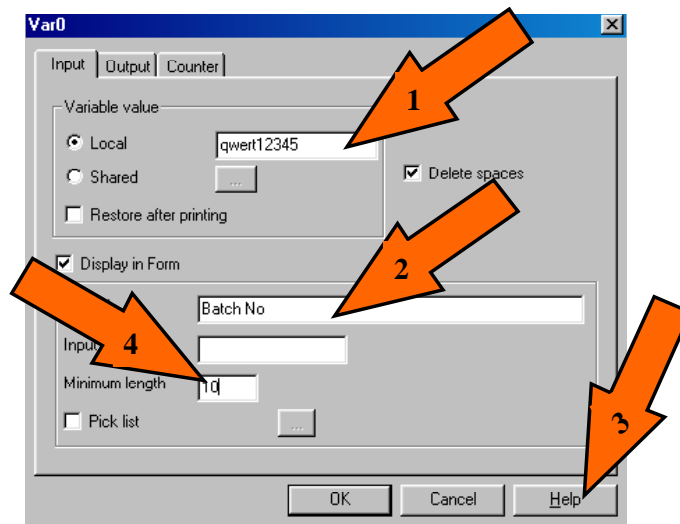


Variable Text Fields are created initially in the same way as Date Fields.

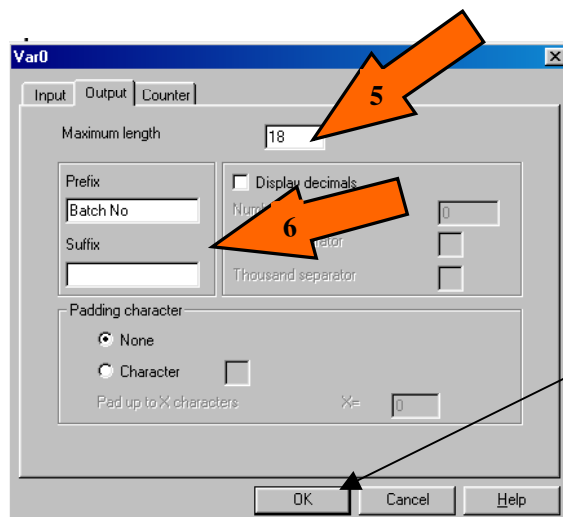
1. Right click the mouse button on the "**Form icon**".
2. Click on "**Add**". A variable named "**Var0**" will appear.
3. Double click on "**Var0**". Variable text field will appear shown below.

Follow the numbered instructions below, referring to the "Arrow numbers".

1. Click on box, input your "**Variable value**" as to be printed.
2. Click on box, enter the "**Prompt**" name required. Displayed when editing from the mini-terminal, *(you cannot have spaces within the name chosen, use an underscore)*
- 3 + 4. Input Format allows more security for the Variable field. Click on "**Help**" for more information



5. Select the "**Output menu**" Click on box, "**Maximum length**" of the variable field characters.
6. You can enter "**Prefix**" or "**Suffix**" to the variable. You have to add the amount of characters used in the prefix, to the total length for the total. Otherwise you may not see a correct view.



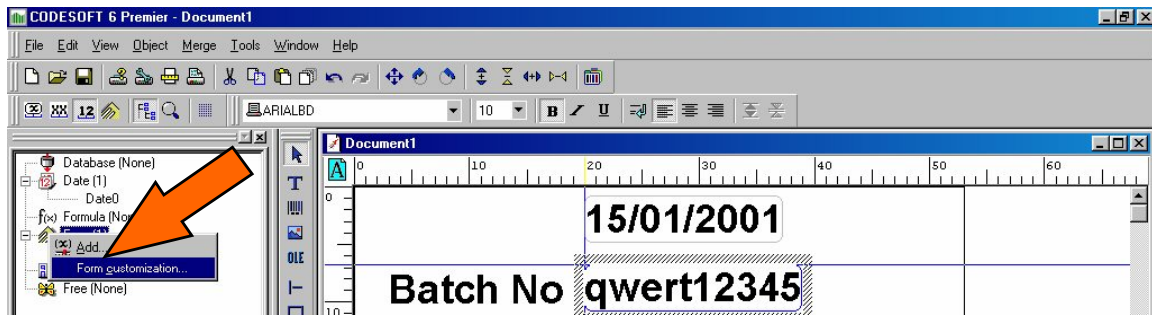
Select "**OK**" when finished

You can click and hold on "**Var0**", to drag the variable on the label as required.

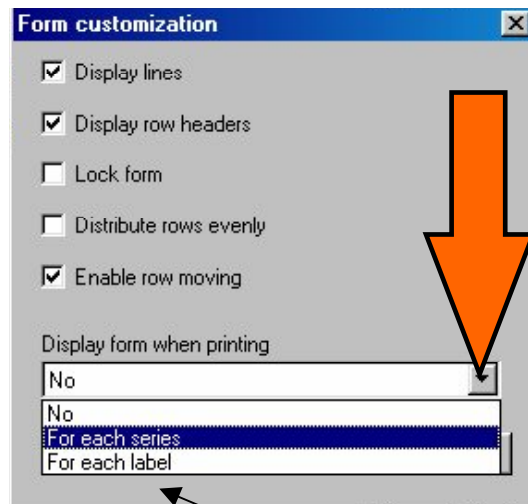
Displaying the filler (Variable fields)

To Display the Filler (variable text screen), allows editing the variables before downloading to the printer.

Click the mouse button "**Form Icon**", then right click mouse button, to display "**Form customisation**".

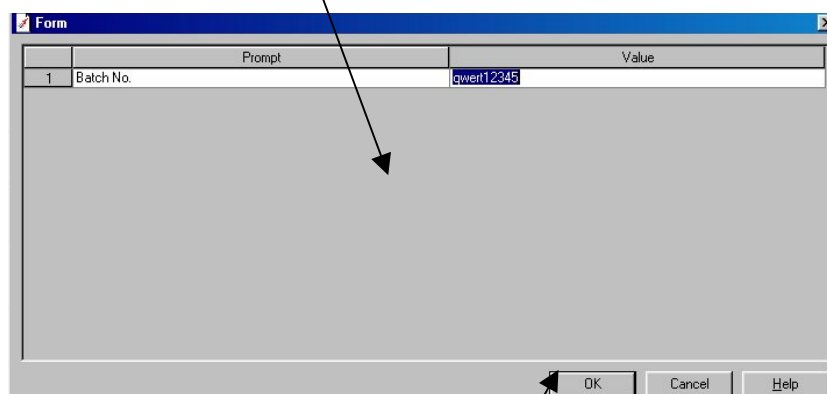


Click within the menu "**Form customisation**", to display the possible options.



When you have made your choice, select "**OK**".

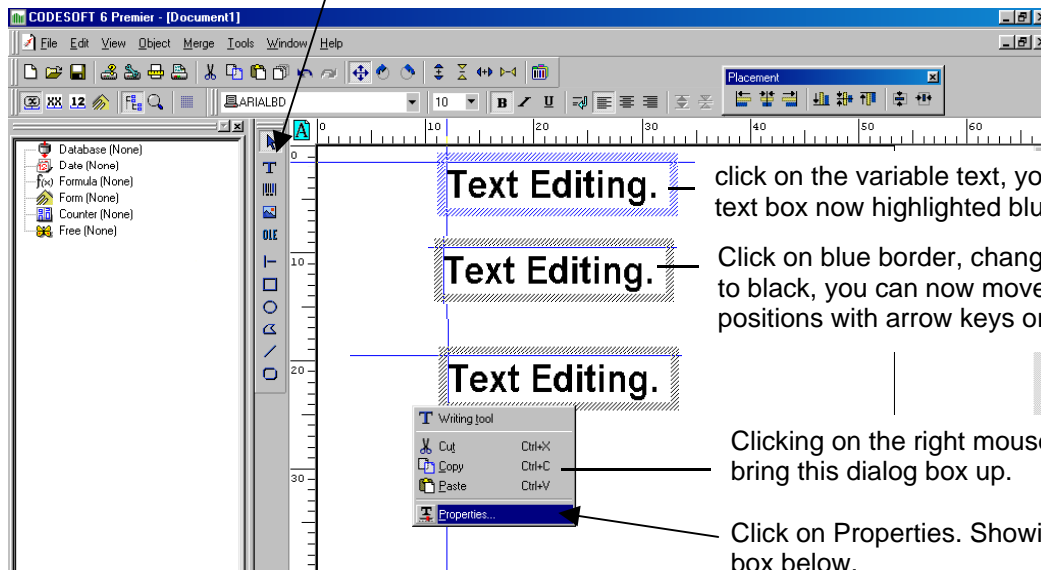
Now when you send a format to the Printer, the screen below is displayed.



Edit or change the variable text fields and select "**OK**" before the format is sent

Text Generation

Click on the "T" symbol, and then place the cursor within the print area and click again.



Text Editing.

click on the variable text, you will see the text box now highlighted blue, for editing.

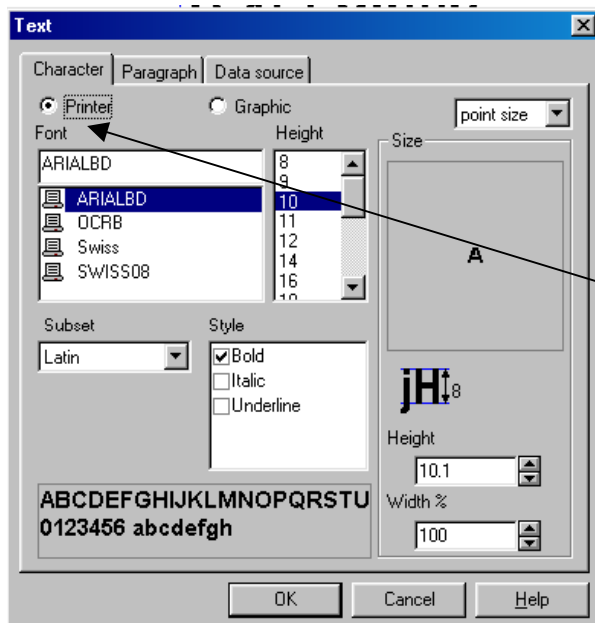
Text Editing.

Click on blue border, changes colour to black, you can now move the text box positions with arrow keys or with the mouse.

Text Editing.

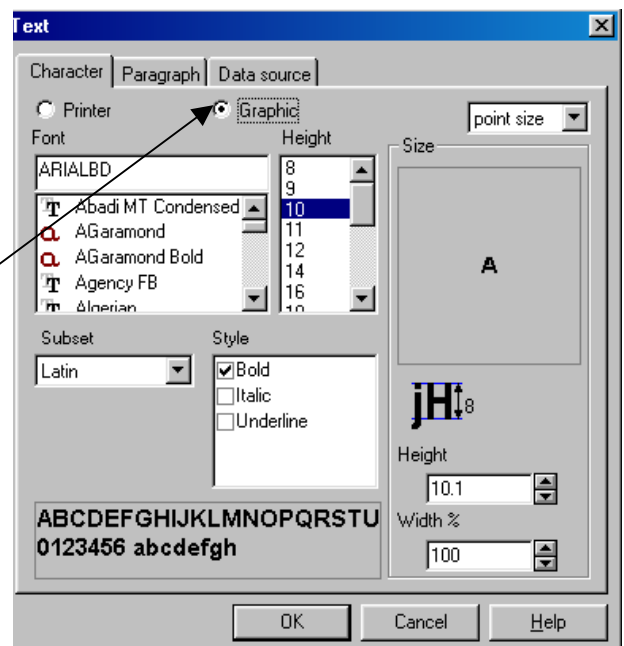
Clicking on the right mouse button will bring this dialog box up.

Click on Properties. Showing Dialog box below.



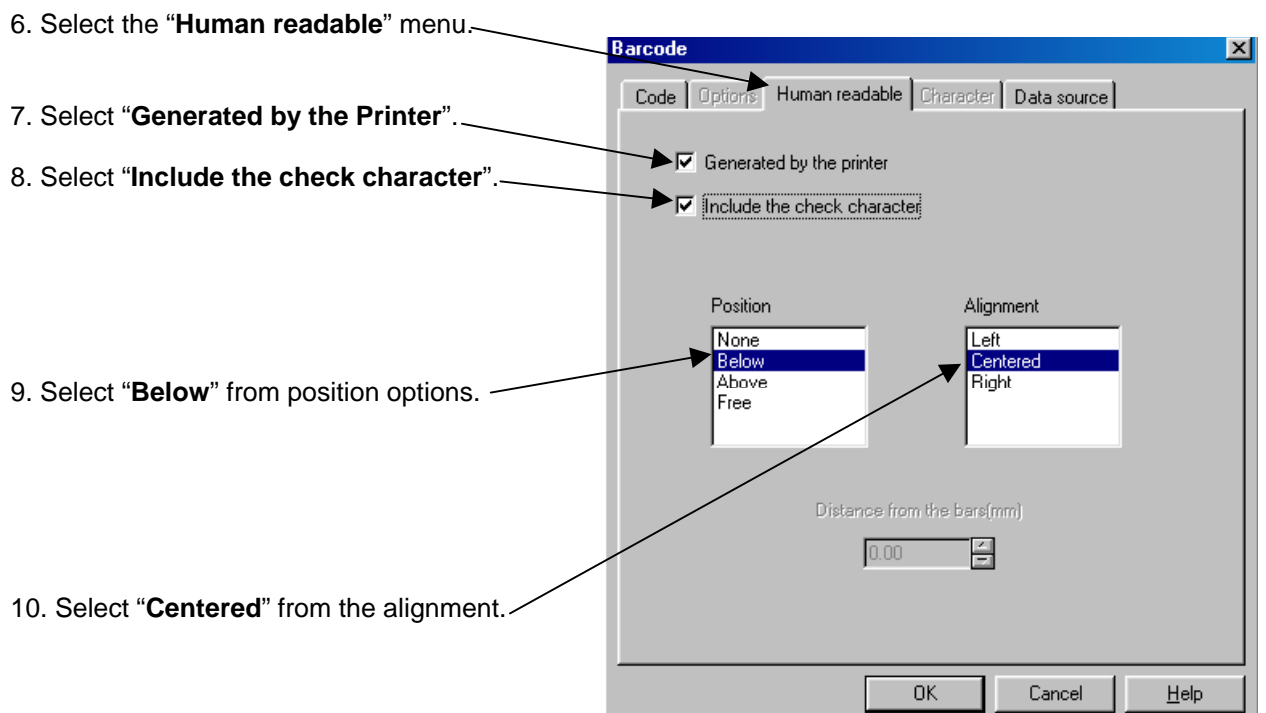
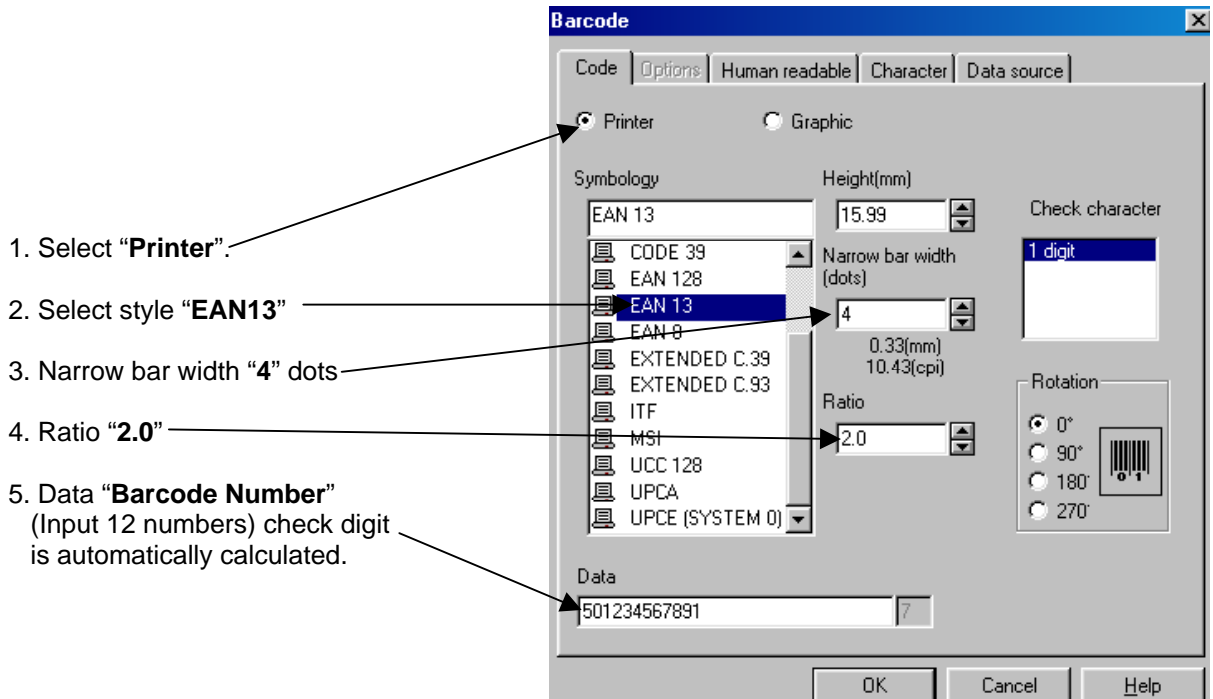
This will use the fonts loaded to the Printer

This will use "Graphic" fonts style as the true type Font selected, but will download a bitmap for the printer.



Creating a Barcode

Click on the "**Barcode**" symbol, and then place the cursor within the print area and click again. The screen below shows the barcode menu.

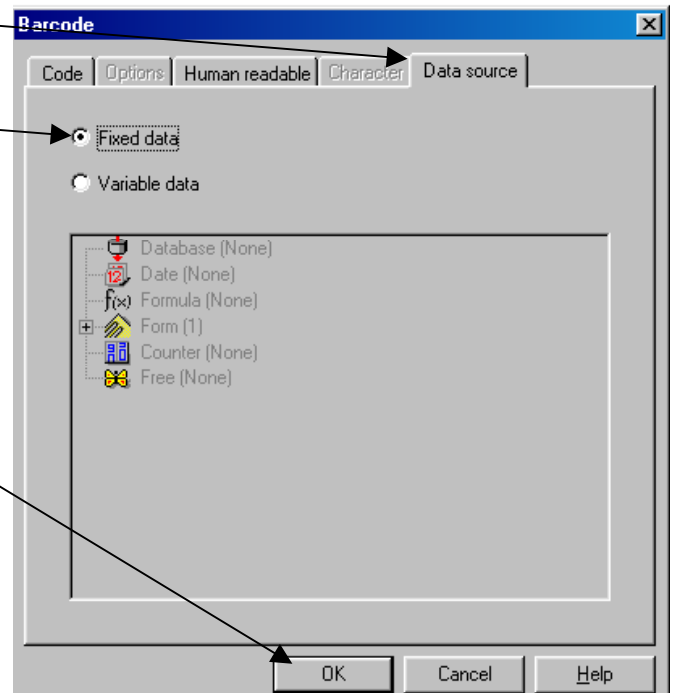


Creating a Barcode (continued)

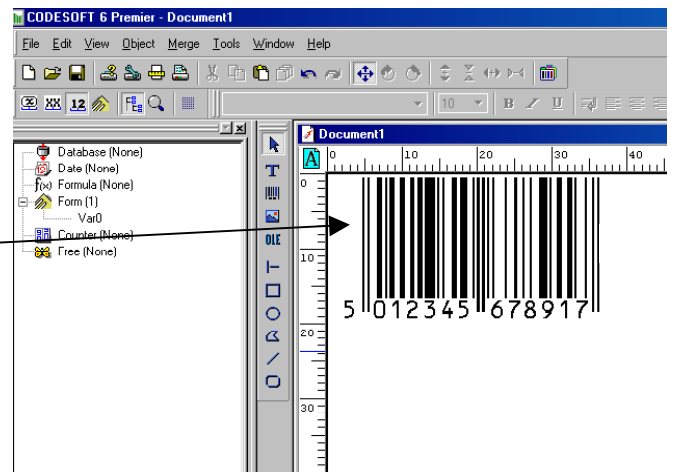
11. Select **"Data Source"** menu.

12. Select **"Fixed data"**.

13. Select **"OK"** to save and return to menu below.



14. Barcode ready for Printing.



Notes !

The printer has an installed font for creating the human readable characters.

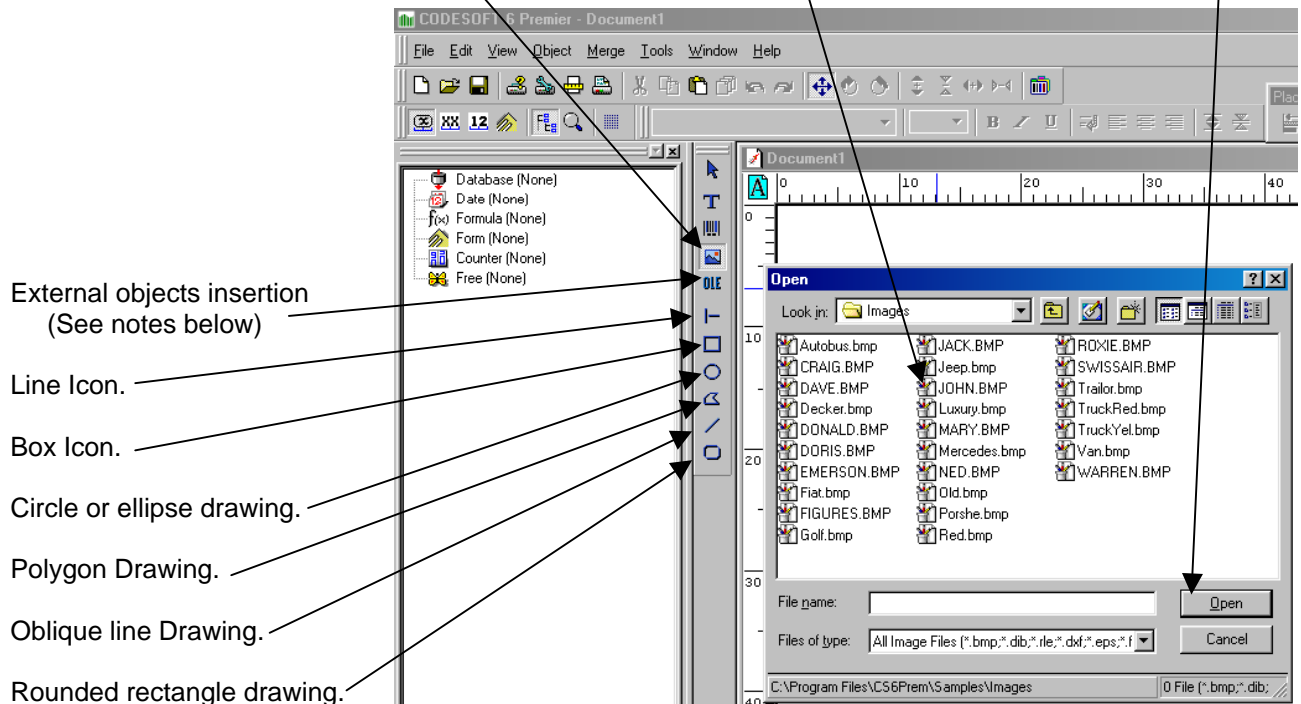
If you choose a different style of barcode, ensure you know all the regulations governing barcodes.

Creating a graphic style barcode can be very complex, it would be advisable to seek training.

Utilising Graphic Images

1. Click on the **"Picture"** icon, and then place the cursor within the print area and click again.

2. Select the **"Image"** file required, and the select **"Open"**



Click on the icon, then place the cursor within the print area. Click and hold down to drag the size required.

Notes !

Lines & Boxes are sent as printer commands, not graphics.

External object insertion, allows the insertion of any document or file into the label.

POD2.INI (Advanced Users.)

Codesoft Directory *example:* (C:\Program files\Cs6Prem)

Unmodified POD.INI File

```
[GLOBALVAR]
PassGeneralIni1="4213"
PassGeneralIni2="999999"
NetworkNumber=0
NetworkPresence=0
;SendOnlyUpdate=Always
;DisplayCounterBox=No
;PrinterHasToBeTheSame=Yes
;ReloadSettings=Yes
;ReloadSettingsFrom=c:\DataSaved.ini
;UseSystemVariables=Yes
```

```
[1HideOptionsInDialogBox]
DISPLAY_ButtonDefault=1
DISPLAY_ButtonOptimize=0
DISPLAY_CheckPrinterStatus=0
DISPLAY_CompressionImage=0
DISPLAY_DestinationMemory=0
DISPLAY_FormatActivated=0
DISPLAY_ImmediatPrinting=0
DISPLAY_InfinitePrinting=0
DISPLAY_Network=0
DISPLAY_ReloadImages=0
DISPLAY_SendModifiedData=0
DISPLAY_StoreFixedImages=0
DISPLAY_TimeOut=0
```

```
[HideOptionsInDialogBox]
DISPLAY_ButtonDefault=1
DISPLAY_ButtonOptimize=1
DISPLAY_CheckPrinterStatus=1
DISPLAY_CompressionImage=1
DISPLAY_DestinationMemory=1
DISPLAY_FormatActivated=1
DISPLAY_ImmediatPrinting=1
DISPLAY_InfinitePrinting=1
DISPLAY_Network=1
DISPLAY_ReloadImages=1
DISPLAY_SendModifiedData=1
DISPLAY_StoreFixedImages=1
DISPLAY_TimeOut=1
```

POD2.INI Continued (Advanced Users.)

[GLOBALVAR]

PassGeneralIni1="4212"

This password is for the 5775 Printer, can be changed to "4212".

PassGeneralIni2="999999"

This password can be changed. (ie. 688065)

NetworkNumber=0

The last network number used by Codesoft (0 = no network)

NetworkPresence=0

Network is present (0 = no network)

;SendOnlyUpdate=Always

For sending update information only

;DisplayCounterBox=No

Dose not display the counter field. Used with databases (see page 29)

;PrinterHasToBeTheSame=Yes

The Printer has to be the same. You cannot send a 53S format to 107L

;ReloadSettings=Yes

To force the driver to read all settings from the user.ini

;ReloadSettingsFrom=C:\DataSaved.ini

To force the driver to read all settings from the dataSaved.ini (DataMode)

;UseSystemVariables=Yes

To read the system variables used in the user.ini

Remove the semi-colon in front of the text; to activate the above instructions.

Deactivating Dialog box Buttons, within Printer settings

This allows you to hide Buttons used in Codesoft Printer settings. The 1 in front of Hide will not read this file. You can customize the file to suit your requirements.

Not Activated (Modified) Example.

Remove the 1 to activate

[1HideOptionsInDialogBox]

DISPLAY_ButtonDefault=1

DISPLAY_ButtonOptimize=0

DISPLAY_CheckPrinterStatus=1

DISPLAY_CompressionImage=1

DISPLAY_DestinationMemory=1

DISPLAY_FormatActivated=1

DISPLAY_ImmediatPrinting=0

DISPLAY_InfinitePrinting=1

DISPLAY_Network=0

DISPLAY_ReloadImages=

DISPLAY_SendModifiedData=0

DISPLAY_StoreFixedImages=1

DISPLAY_TimeOut=1

Activated (Standard)

Insert the 1 to deactivate

[HideOptionsInDialogBox]

DISPLAY_ButtonDefault=1

DISPLAY_ButtonOptimize=1

DISPLAY_CheckPrinterStatus=1

DISPLAY_CompressionImage=1

DISPLAY_DestinationMemory=1

DISPLAY_FormatActivated=1

DISPLAY_ImmediatPrinting=1

DISPLAY_InfinitePrinting=1

DISPLAY_Network=1

DISPLAY_ReloadImages=1

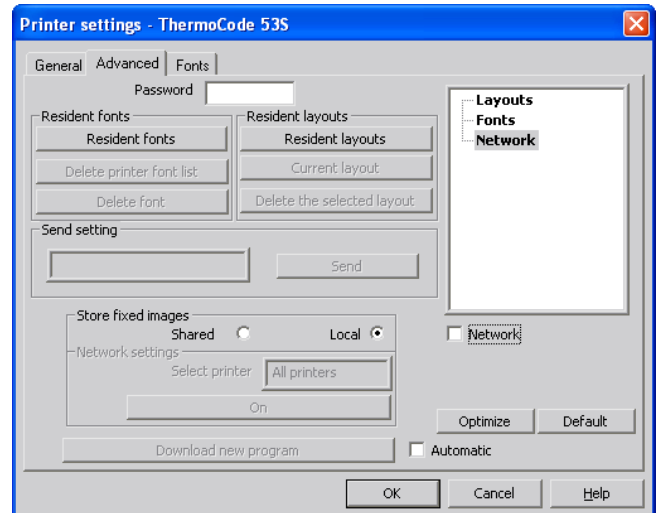
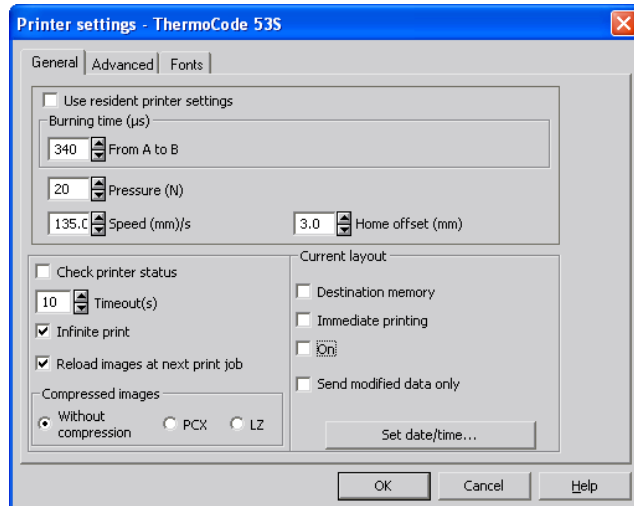
DISPLAY_SendModifiedData=1

DISPLAY_StoreFixedImages=1

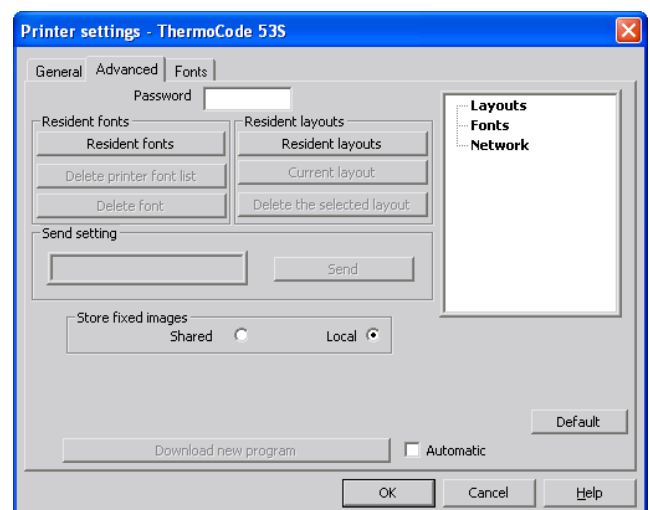
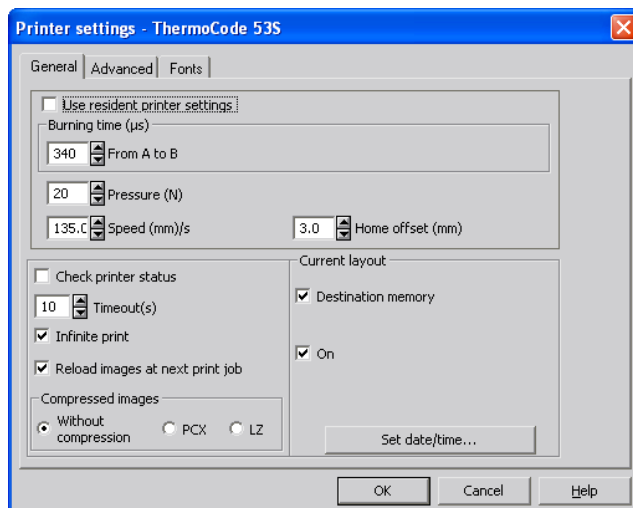
DISPLAY_TimeOut=1

POD2.INI Continued (Advanced Users.)

The standard Dialog Boxes showing all the Buttons



These boxes shows the buttons hidden Example.



Shortcut Keys

ALT + F4	Exit the application.	F1	Help
CTRL + 0	Zoom x 0.5	F2	Open a Document
CTRL + 1	Zoom x 1	F3	Save Document
CTRL + 2	Zoom x 2	F4	Display the Form
CTRL + 3	Zoom x 3	F5	Select Printer
CTRL + 4	Zoom x 4	F6	Print
CTRL + A	Select All	F7	Open the Text dialog box
CTRL + C	Copy	F8	Open the Barcode dialog box
CTRL + D	Duplicate	F9	Open an ASCII table
CTRL + End	Go to end of paragraph		
CTRL + Right arrow	Go to start of next word		
CTRL + Left arrow	Go to start of previous word		
CTRL + Home	Go to start of paragraph		
CTRL + Insert	Copy		
CTRL + N	New Document		
CTRL + O	Open Document		
CTRL + P	Print a Document		
CTRL + S	Save a Document		
CTRL + T	Zoom right out		
CTRL + V	Paste		
CTRL + W	Display variable sizes		
CTRL + X	Cut		
CTRL + Y	Redo		
CTRL + Z	Cancel		
CTRL + F4	Close active window		
CTRL + F6	Move from one document to another		
Shift + F4	Display Variable value		
Shift + F9	Create an ODBC query		
Shift + F3	Save Document As		
Shift + Insert	Paste		
Esc	Display variable name		
End	Go to end of line		
Home	Go to beginning of line		