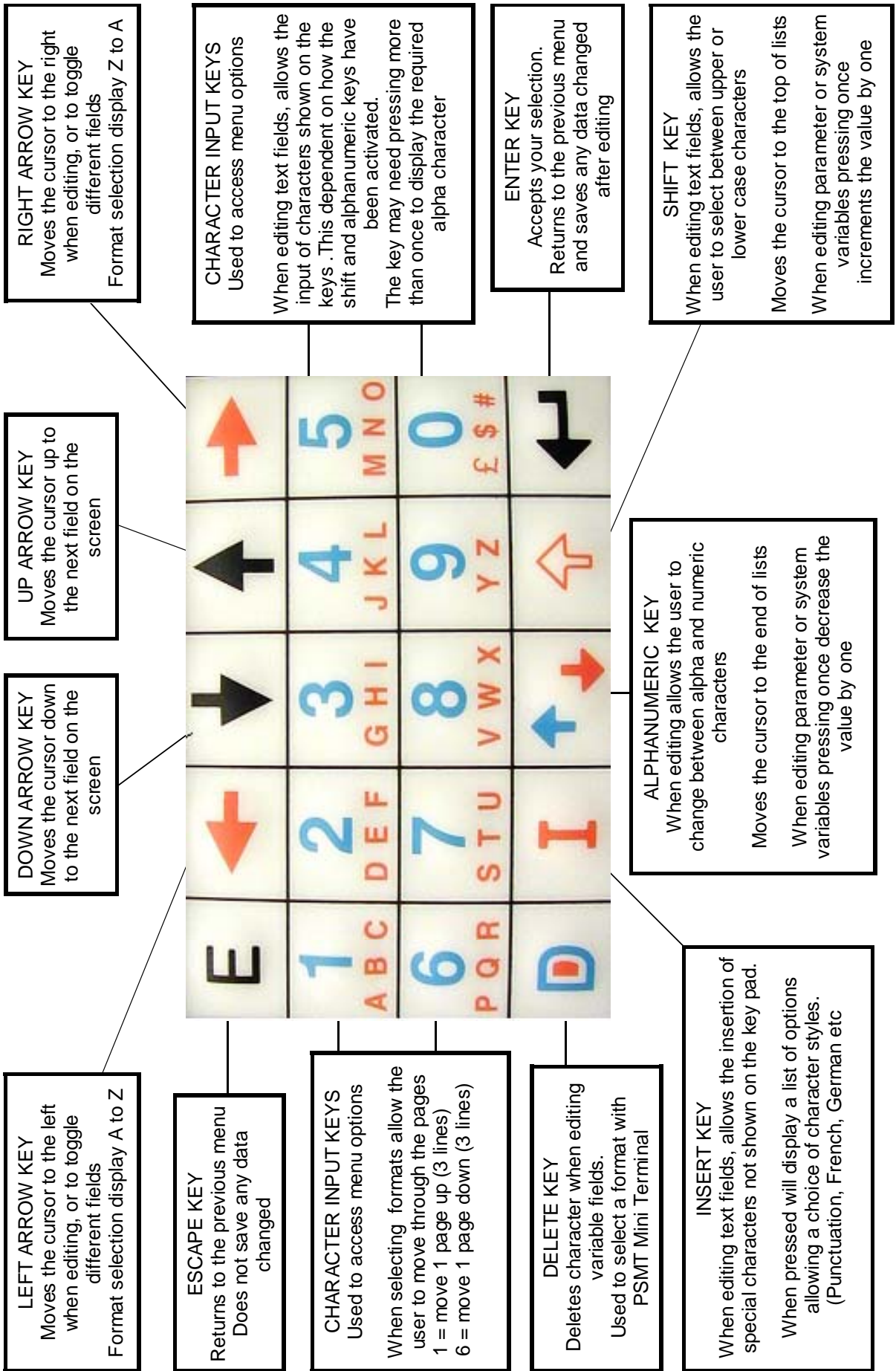


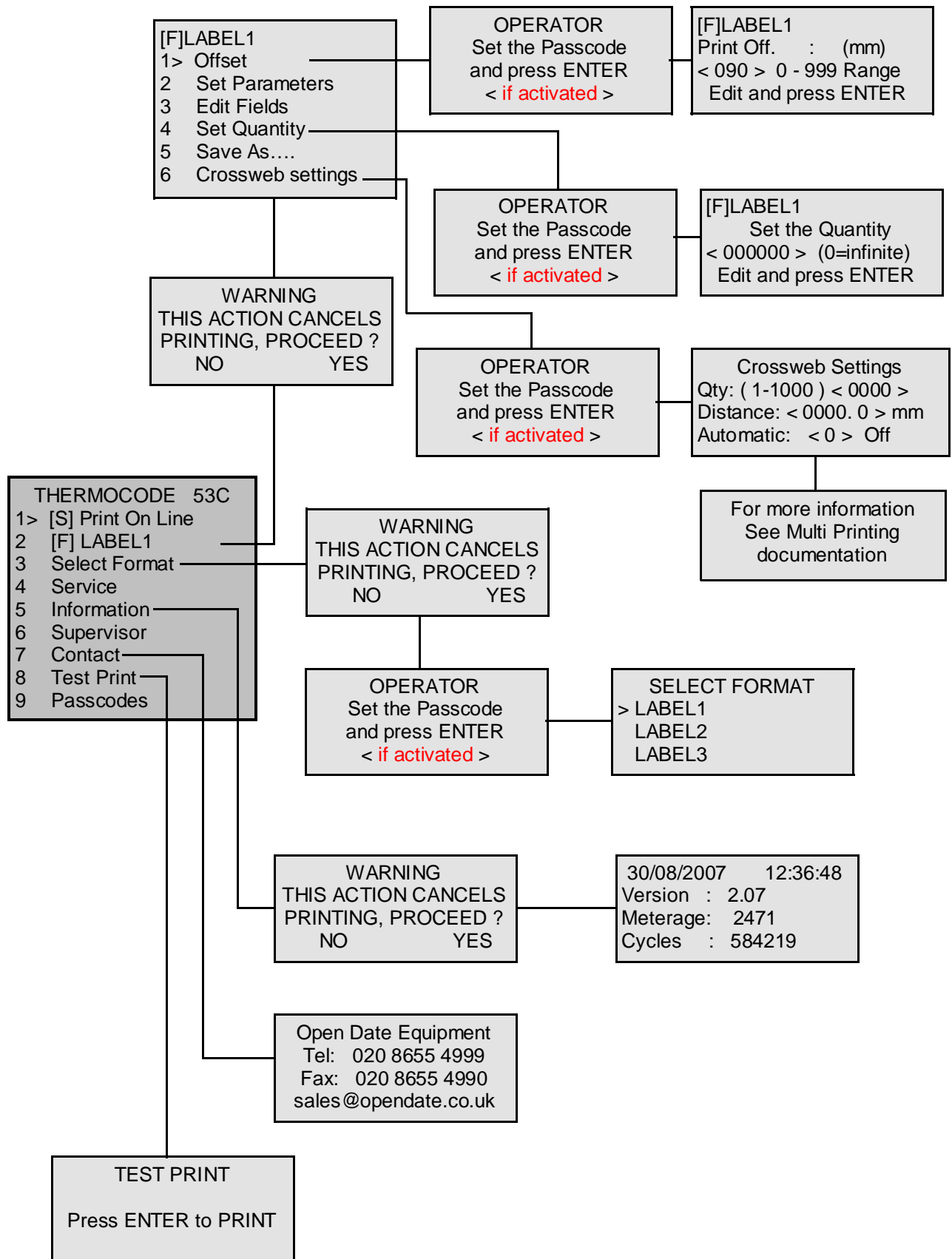
# Continuous Mini Terminal Flow Chart

## MINI TERMINAL (Key mapping)



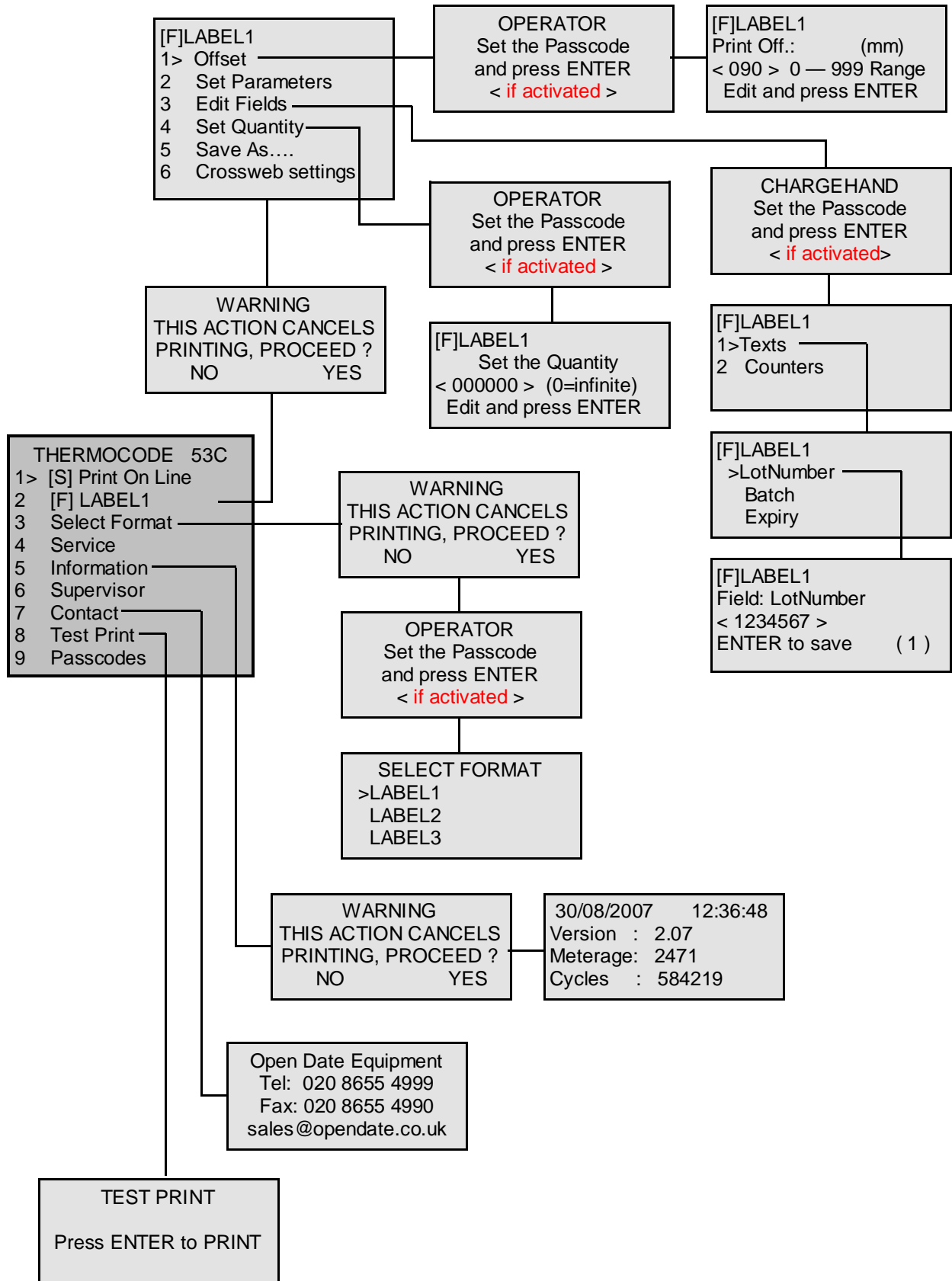
# Continuous Mini Terminal Flow Chart

## STATUS DISPLAY SOFTWARE FLOWCHARTS (Level 1: OPERATOR)



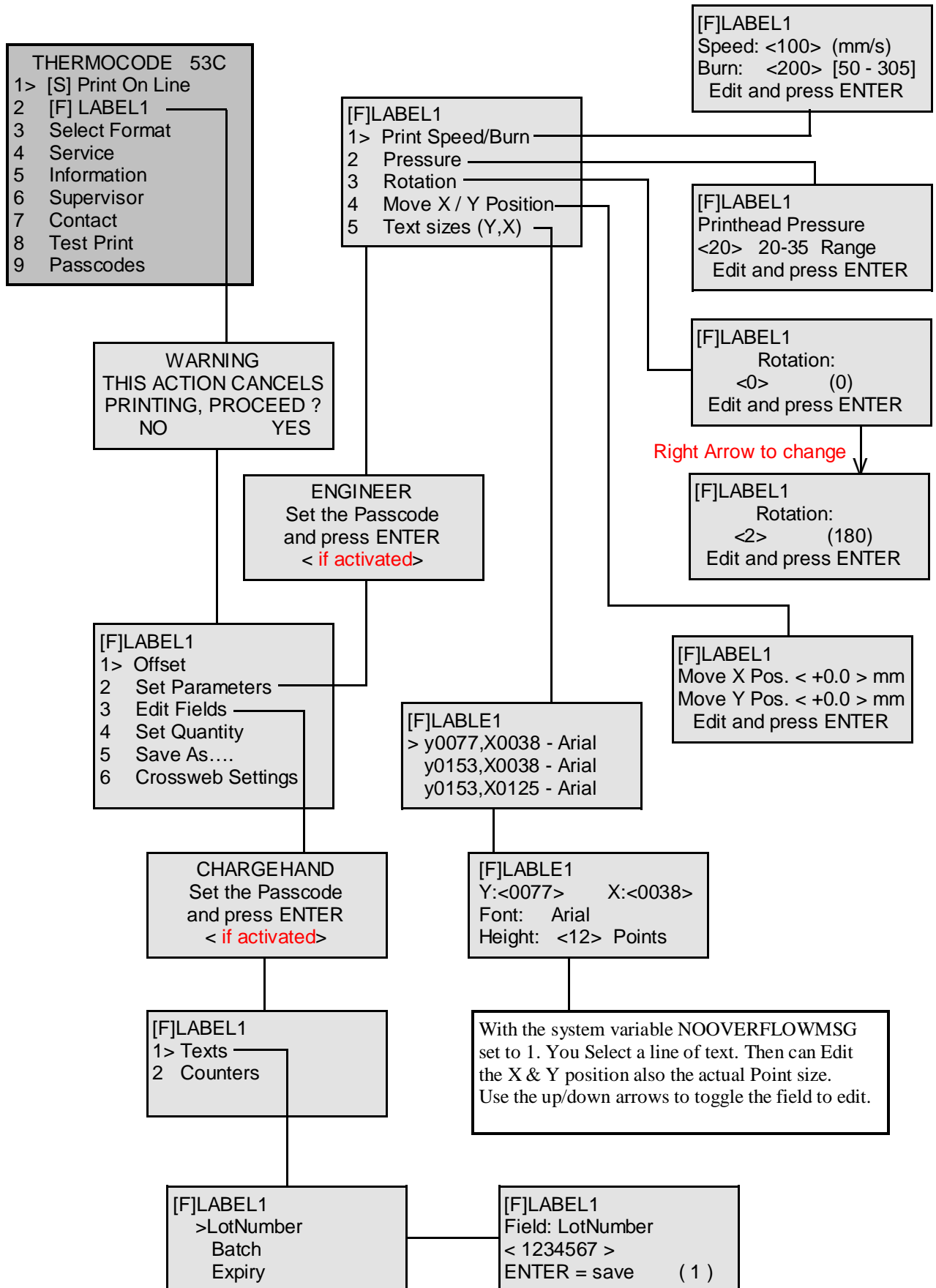
# Continuous Mini Terminal Flow Chart

## STATUS DISPLAY SOFTWARE FLOWCHARTS (Level 2: CHARGEHAND)



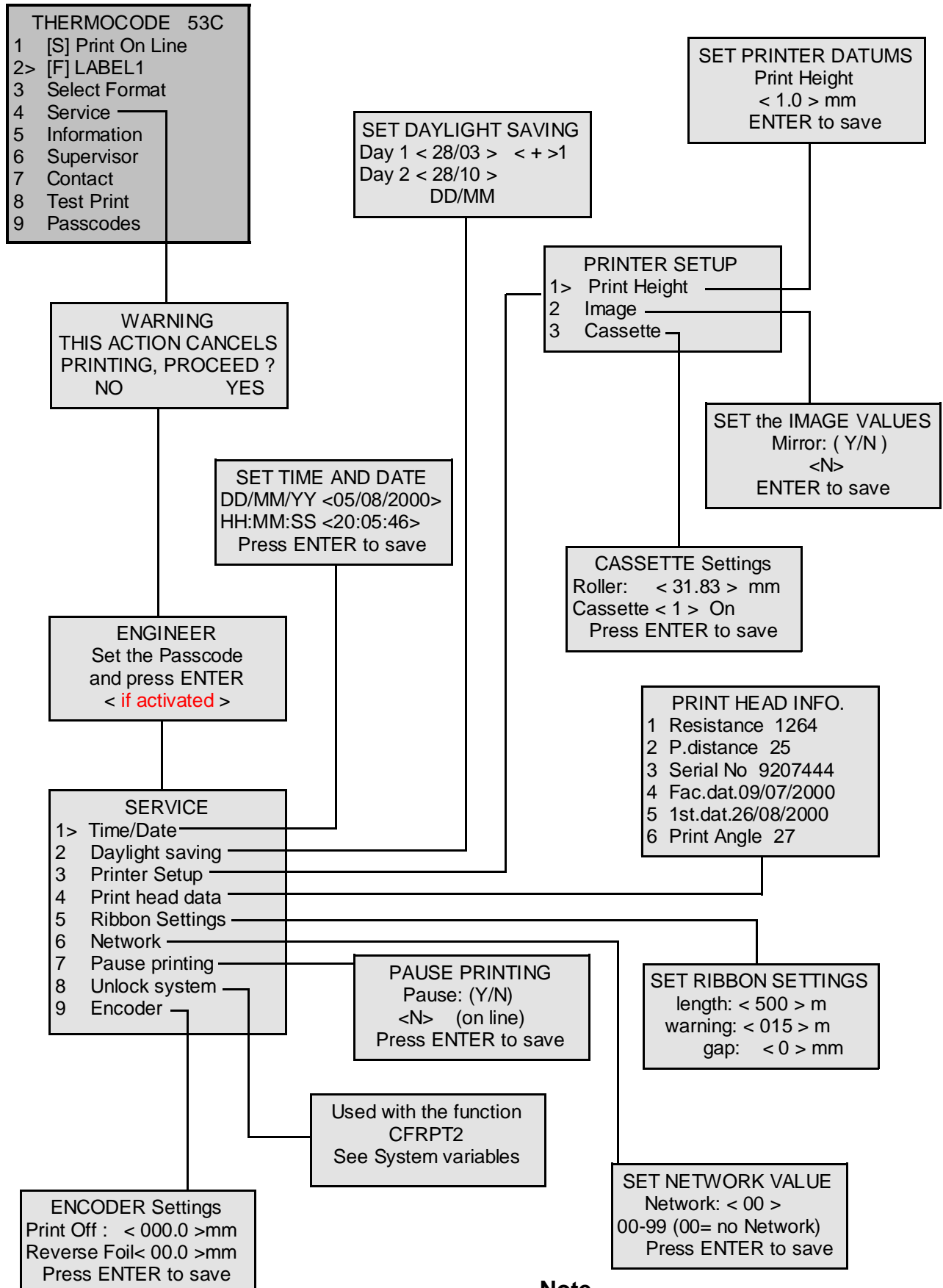
# Continuous Mini Terminal Flow Chart

## STATUS DISPLAY SOFTWARE FLOWCHARTS (Level 3: ENGINEER)



# Continuous Mini Terminal Flow Chart

## STATUS DISPLAY SOFTWARE FLOWCHARTS (Level 3: ENGINEER)



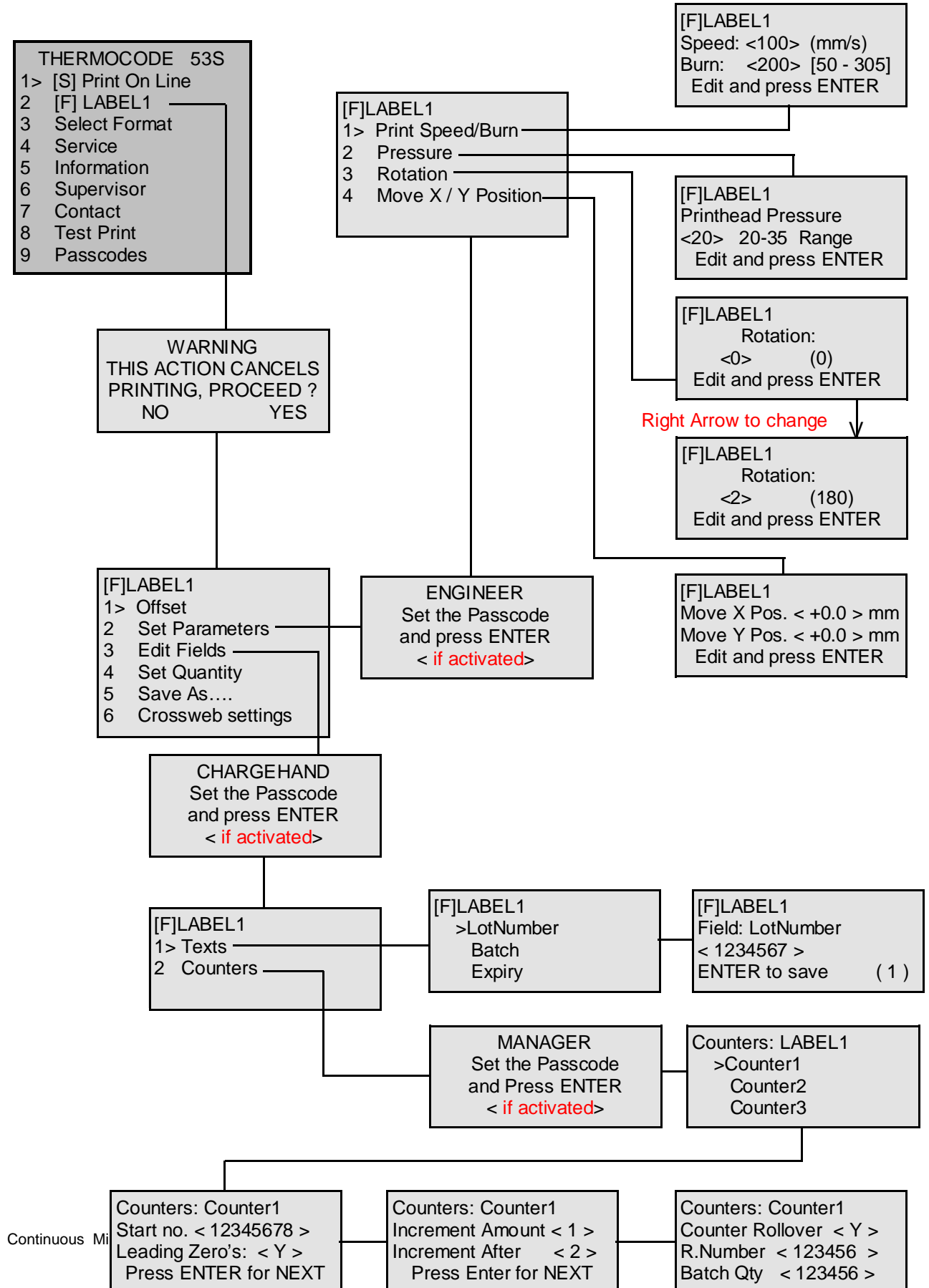
### Note

#### 6 > Network

Refers to Open Date's Network system and is no longer available

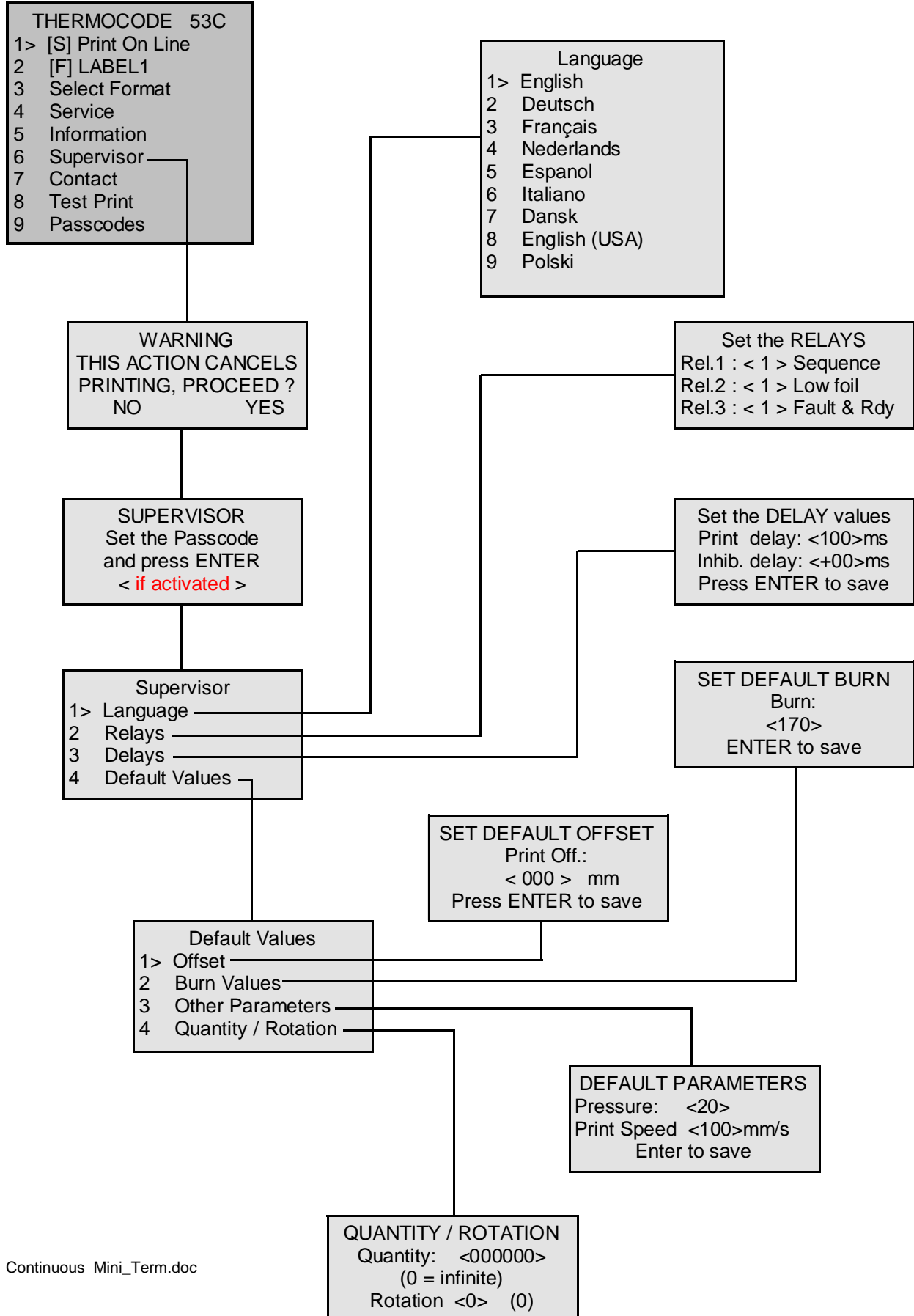
# Continuous Mini Terminal Flow Chart

## STATUS DISPLAY SOFTWARE FLOWCHARTS (Level 4: MANAGER)



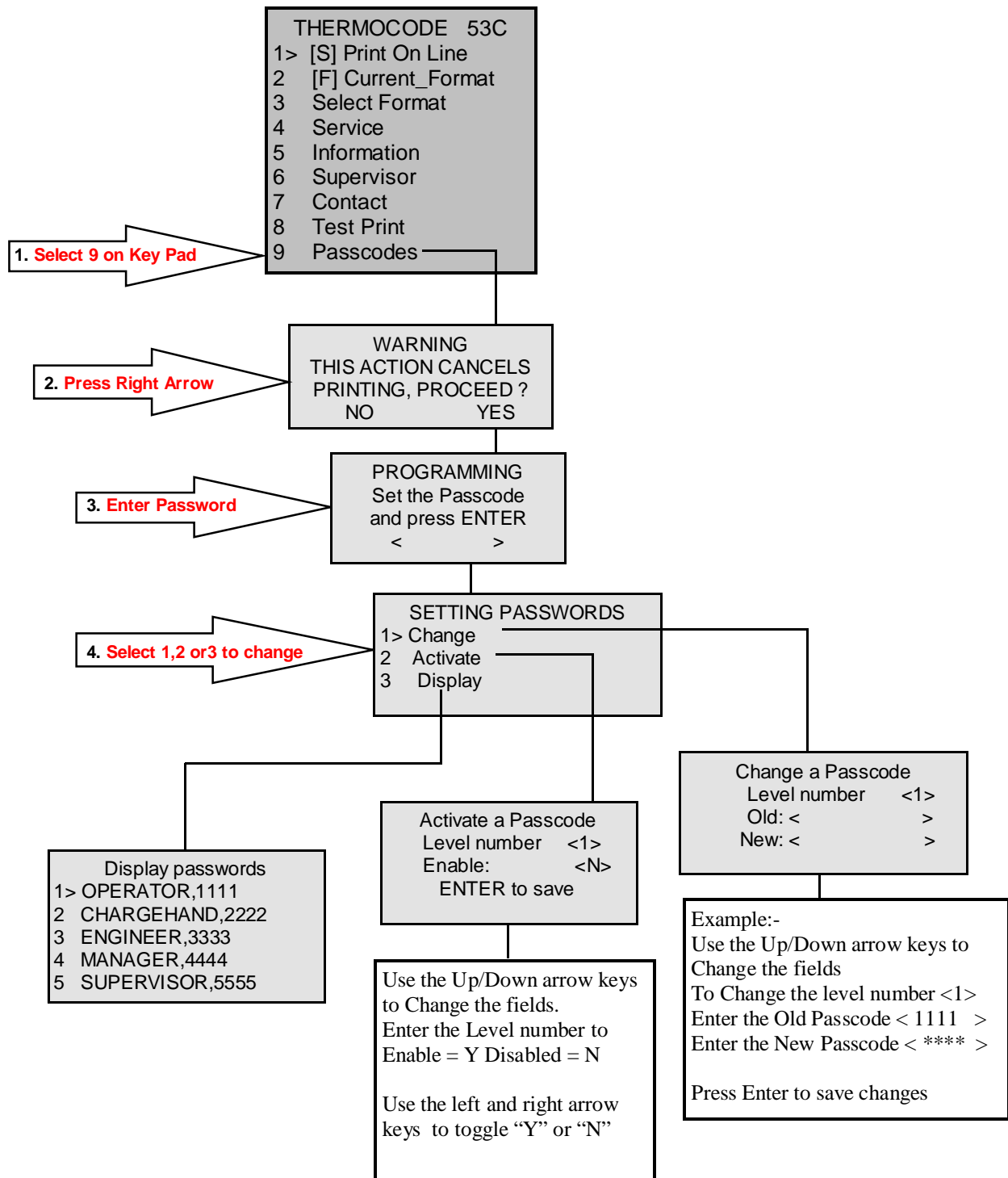
# Continuous Mini Terminal Flow Chart

## STATUS DISPLAY SOFTWARE FLOWCHARTS (Level 5: SUPERVISOR)



## Continuous Mini Terminal Flow Chart

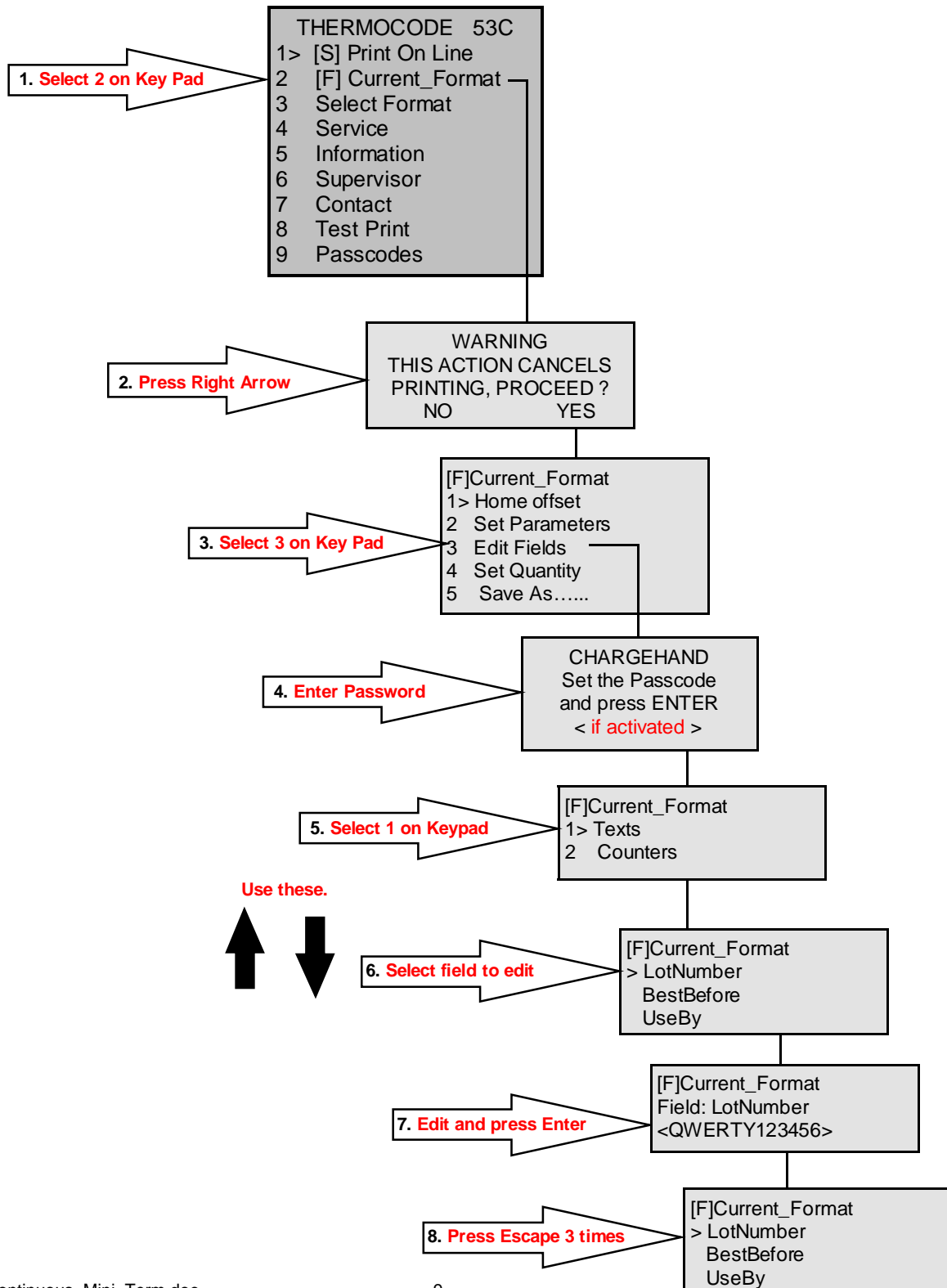
### STATUS DISPLAY SOFTWARE FLOWCHARTS (Level 7: PROGRAMMING)





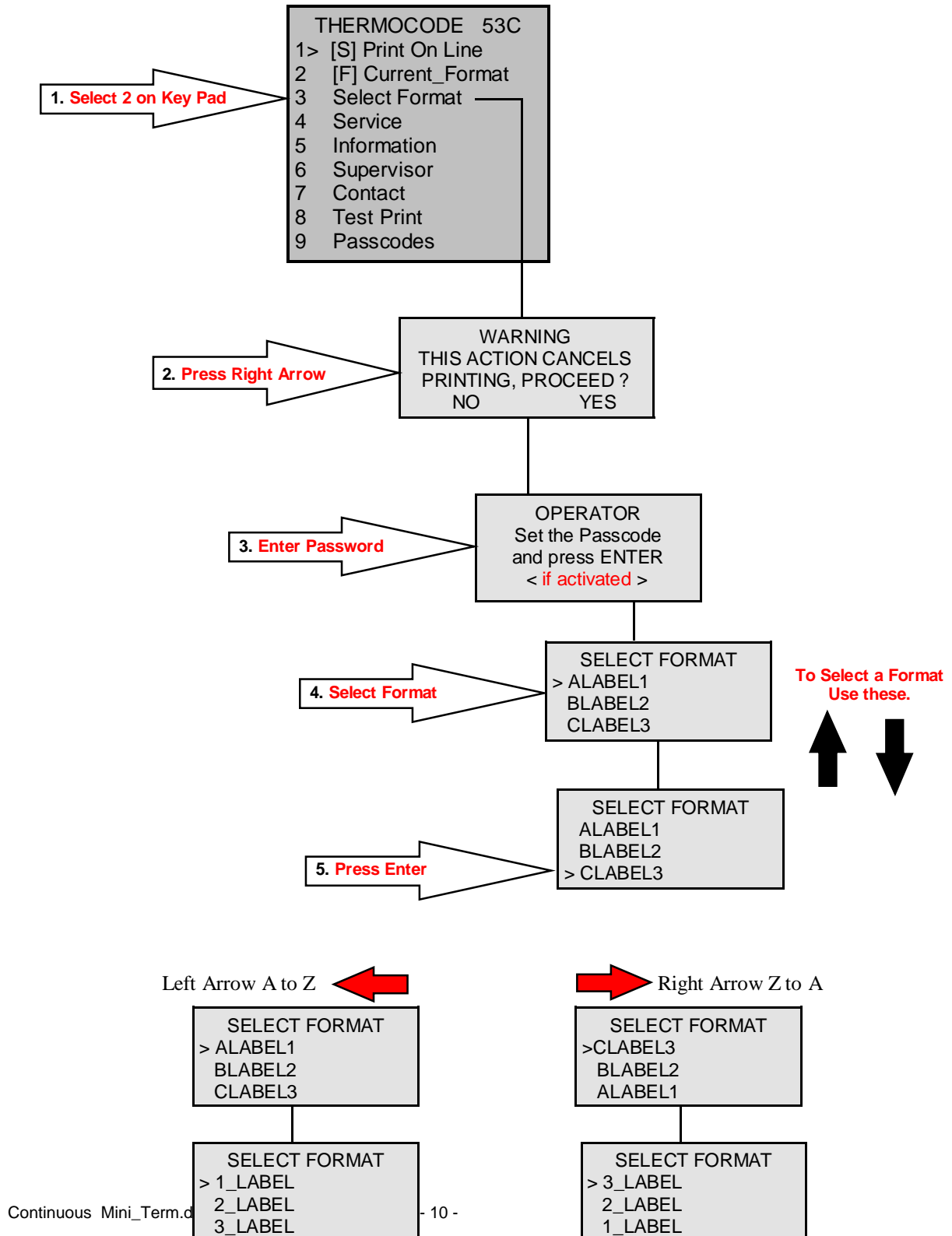
# Continuous Mini Terminal Flow Chart

## Editing Text Fields



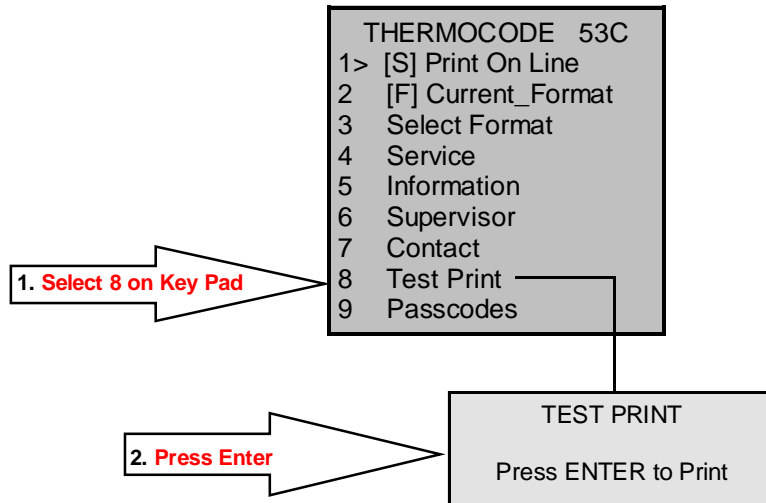
# Continuous Mini Terminal Flow Chart

## Selecting a New Format

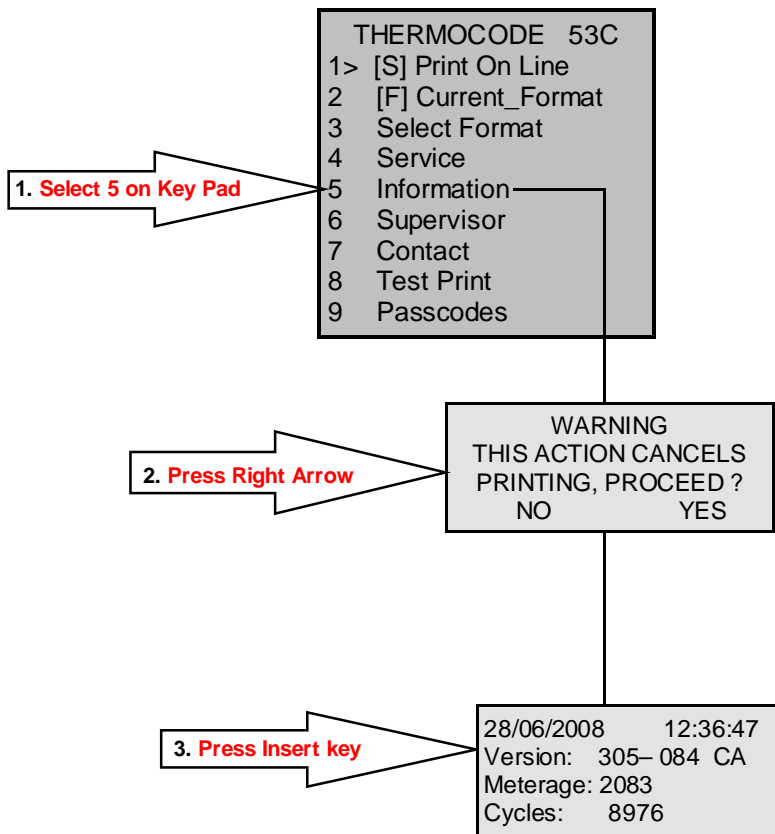


# Continuous Mini Terminal Flow Chart

## Making Test Prints



## Information Screen



## Continuous Mini Terminal Flow Chart